

8.12 Tools

Table of contents

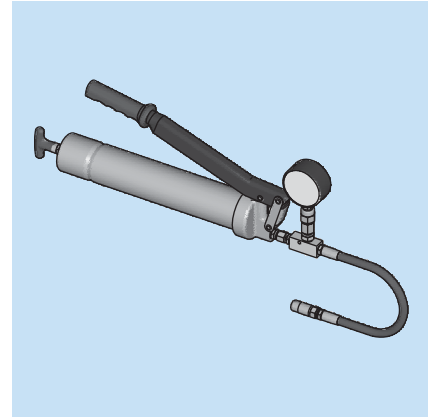
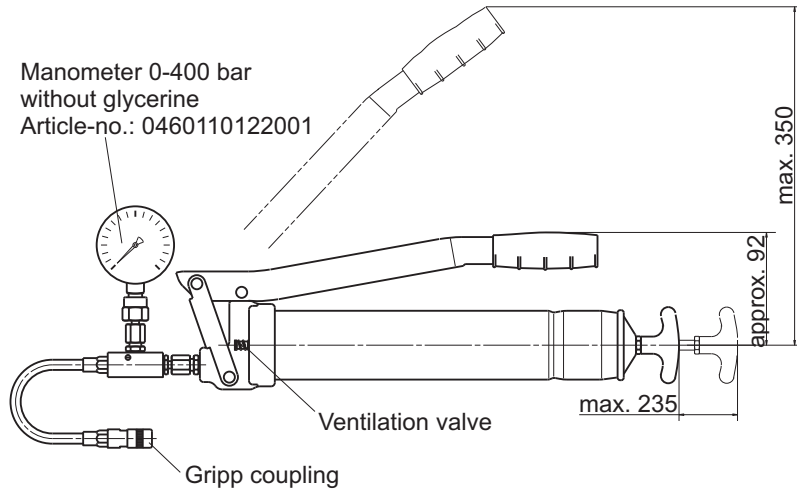
Page

Manual lever grease pump	8.12.2
KIT for checking central lubrication systems	
Manual lever grease pump	8.12.3
Plug tube with grip coupling	8.12.3
Pressure gauge with coupling	8.12.4
Extension with grease nipple	8.12.4
Tools	
Centering device	8.12.5
Screw-in device for elbow screw fitting	8.12.6
Hose scissors, large	8.12.7
Replacing blades for hose scissors, large	8.12.7
Hose scissors, small	8.12.8
Replacing blades for hose scissors, small	8.12.8



Hand lever grease pump acc to FAZ02255-00

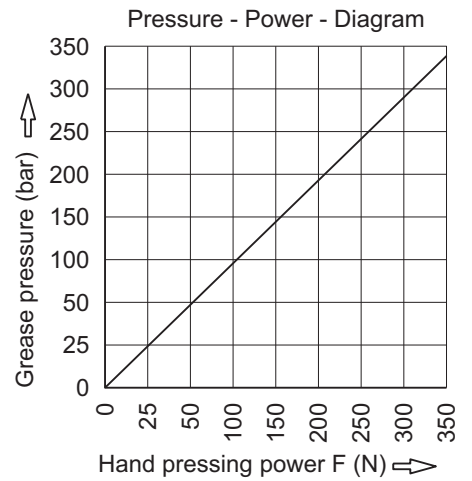
for filling electric pump EP-1 and PICO and for lubricating suitable for grease cartridges according to DIN 1284



Technical data:

Pressure: max. 350 bar
 Delivery rate: max. 2 cm³/stroke
 Cartridge volume: 400 g
 Volume w/o cartridge: 500 cm³
 max. tube outside diameter: 53,5 mm
 min. tube inside diameter: 51 mm
 Delivery media: Greases up to NLGI-KI. 2

Part-No.	Grease volume
21590080000	max. 500 cm ³



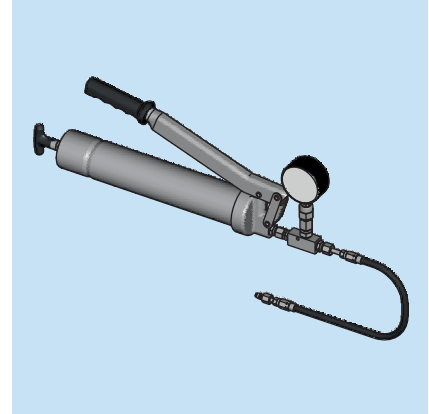
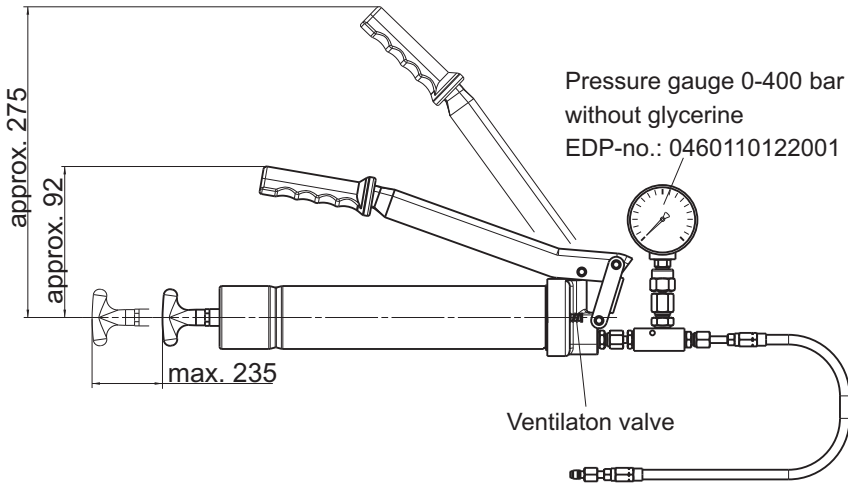
KIT

for checking central lubrication systems

Manual lever grease pump at DIN 1283

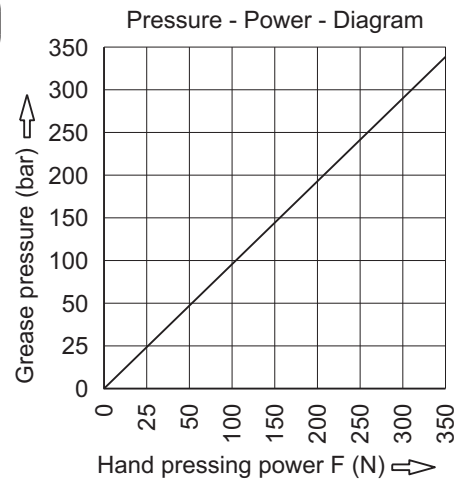
with pressure gauge and plug tube for connecting with progressive distributors

Plug Ø6 M10x1



Technical data:

Pressure:	max. 350 bar	max. tube outside dia.:	53.5 mm
Delivery rate:	max. 2 cm ³ /stroke	min. tube inside dia.:	51 mm
Cartridge volume:	400 g	Delivery media:	Greases up to NLGI-Kl. 2
Volume w/o cartridge:	500 g		

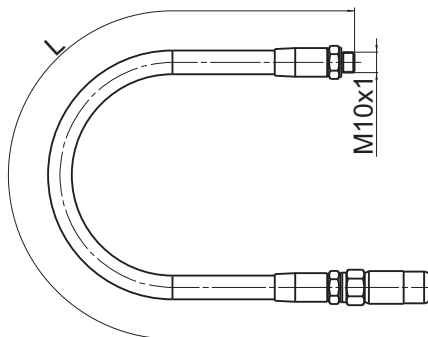


Part-No.	Grease volume
21590080003	max. 500 cm ³

Plug tube with grip coupling

for manual lever grease pump

for connecting to grease nipples, DIN 71412



Part-No.	Length L
100120210	330 mm

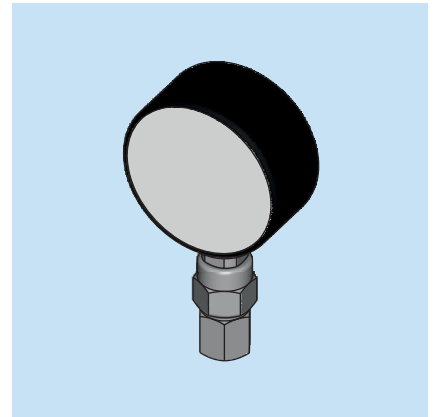
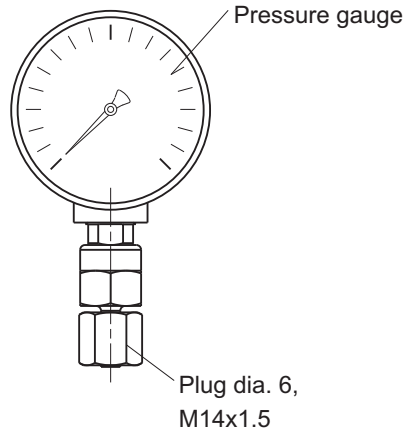
© BEKA 2013 All rights reserved!

Subject to alterations!



Pressure gauge with coupling

to be assembled with the pump element
 Plug dia. 6 M14x1.5



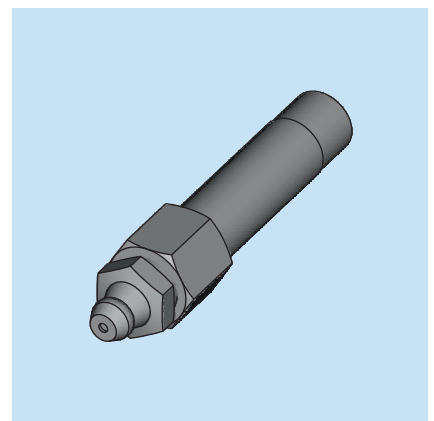
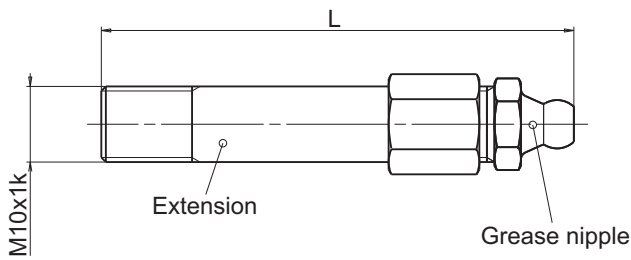
consisting of:

- Pressure gauge DN 63 with glycerine filling
- Pressure gauge connecting plug dia. 6, R1/4", not preassembled
- Union nut dia. 6S, M14x1.5
- Cutting ring SR6

Part-No.	Pressure gauge
21590130001	DN 63, with glycerine filling 0 - 400 bar

Extension

with grease nipple at DIN 71412



consisting of:

- Extension M10x1k - M10x1, length 50 mm
- Grease nipple M10x1k, DIN 71412

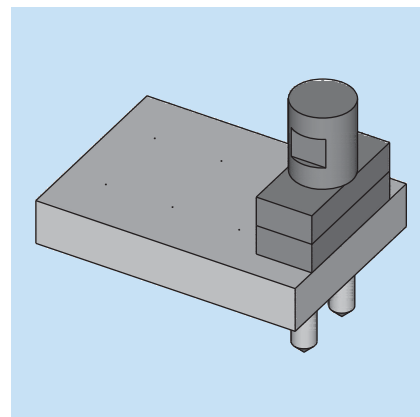
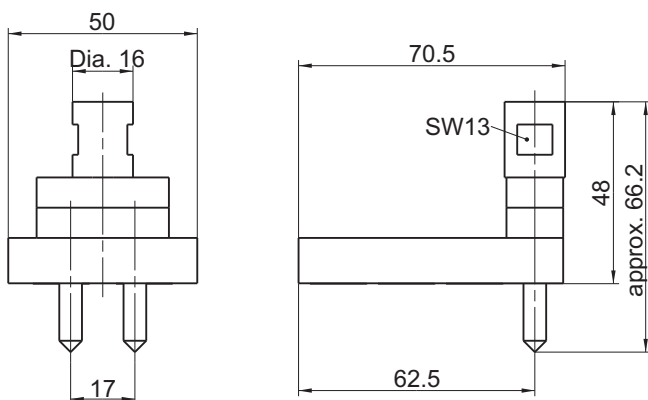
Part-No.	L
21590090015	approx. 62.5

© BEKA 2013 All rights reserved!

Subject to alterations!



Centering device



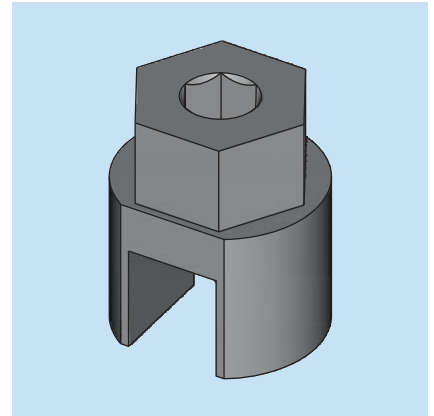
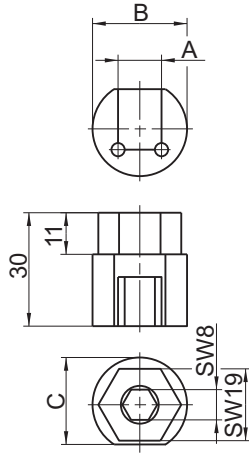
Part-No.	Material
4566 0001	Aluminum Steel

All Parts made of steel are zinc coated and blue chromated.



Screw-in device

for elbow screw fitting

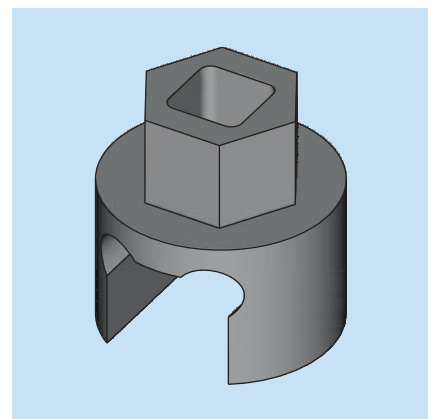
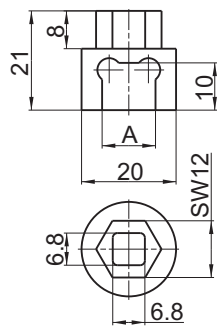


Part-no.	for coupling	A	B	C	Material
F4566/06-00 001	WE6LL-M10x1	11.5	Ø25	23	Steel inserted and hardened
F4566/06-00 002	WE6L-M10x1 WE8L-M10x1	12.5	Ø25	23	
F4566/06-00 003	WE8L-M12x1.5	14.5	Ø28	24.5	

All parts made of steel are zinc coated and blue chromated.

Screw-in device

for elbow screw fitting

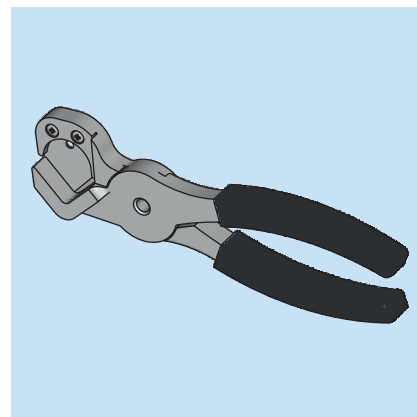
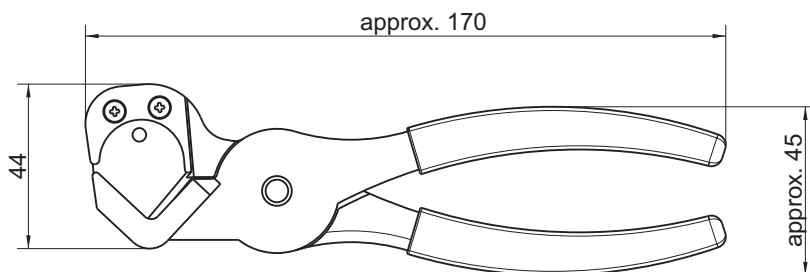


Part-no.	A	Material
FWZ05658-00	11.3	Steel
FWZ05658-01	10.3	Steel

All parts made of steel are zinc coated and blue chromated.

Hose scissors, large

incl. bag and two replacing blades

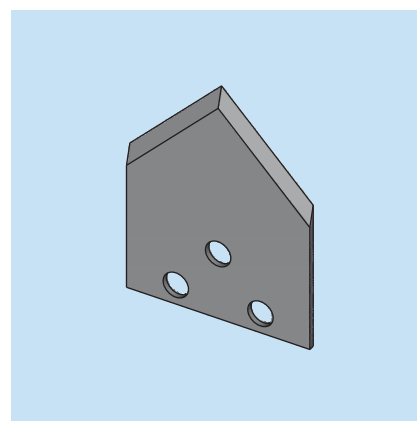
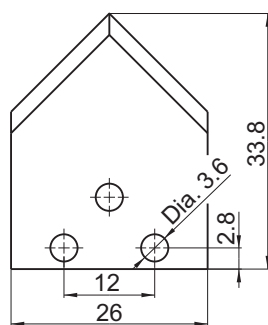


Part-No.	Cutting size	Material
0488 0008	2-20 mm	Steel zinc coated

Holder covered with plastic, blue

Replacing blades

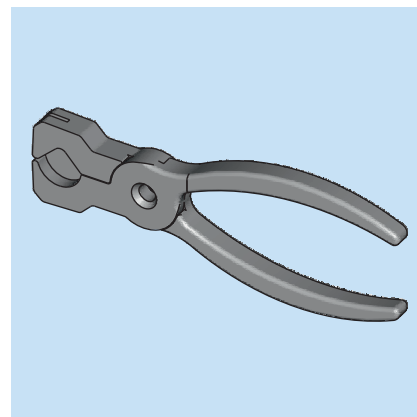
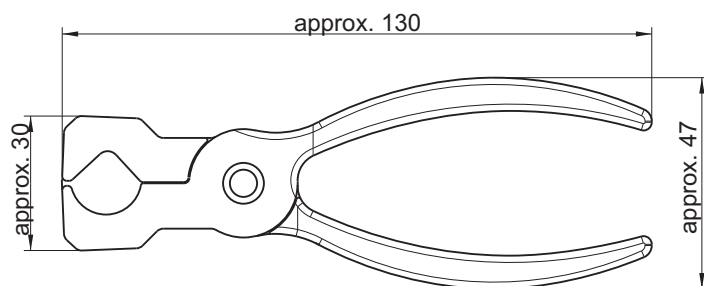
for large hose scissors



Part-No.	Material
0488 0007	Steel zinc coated



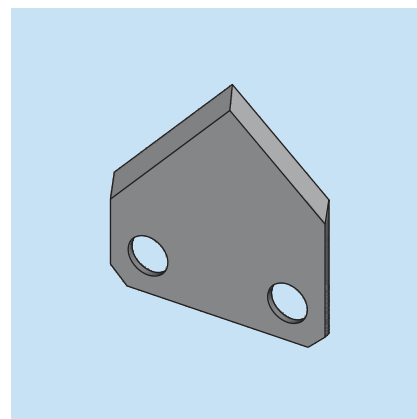
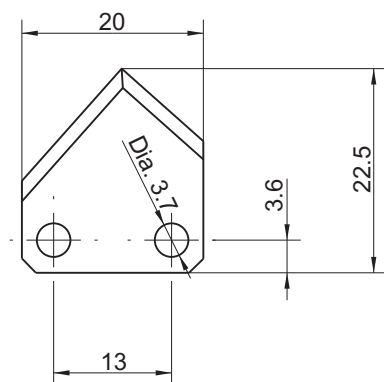
Hose scissors, small



Part-No.	Cutting size	Material
0488 0005	2-12 mm	Steel zinc coated

Replacing blades

for small hose scissors



Part-No.	Material
0488 0006	Steel zinc coated

