

8.5 Progressive distributors MX-F

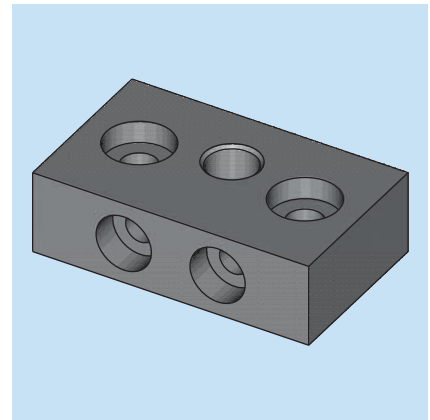
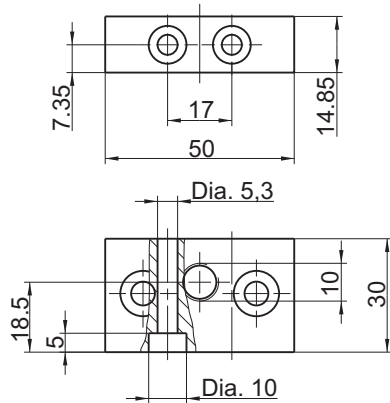
Table of Contents

	Page
Elements	
Initial element	8.5.2
Initial element with elbow screw fitting	8.5.2
Middle elements	8.5.3
Element 00, with attached proximity switch	8.5.3
End elements	8.5.4
End elements with form grease nipple	8.5.4
Elements with attached proximity switch	8.5.5
Accessories	
Lock screw	8.5.6
Sealing screw	8.5.6
Screw fittings	
Screw fittings for outlets	8.5.7
Non-return valves	8.5.8
Components	
Pipe bridge	8.5.9
Distributor bridge, without outlet, without non-return valve	8.5.9
Distributor bridge, without outlet, with non-return valve	8.5.10
Distributor bridge with outlet	8.5.10
Power cords	
Power cord with connector 4-pole	8.5.11
Adapter cable with connector 4-pole	8.5.12
Mounting Brackets and Mounting Plates	
Mounting Brackets	8.5.13 - 8.5.16
Mounting Plates	8.5.17 - 8.5.18



Initial element

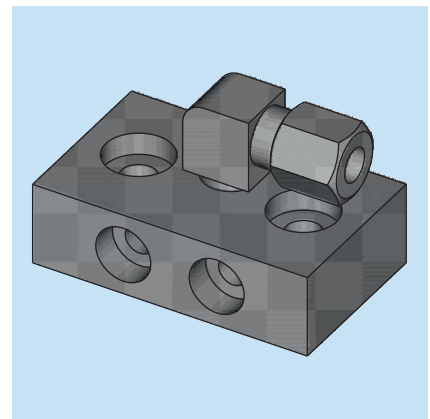
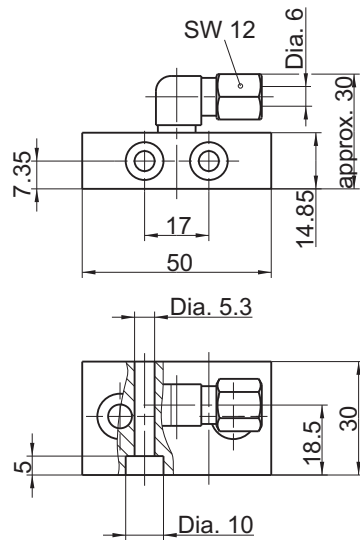
for progressive distributor MX-F



Part-No.	Material
4010 94 001	Steel zinc coated, yellow chromate

Initial element

for progressive distributor MX-F
 with elbow screw fitting WE6 M10x1k

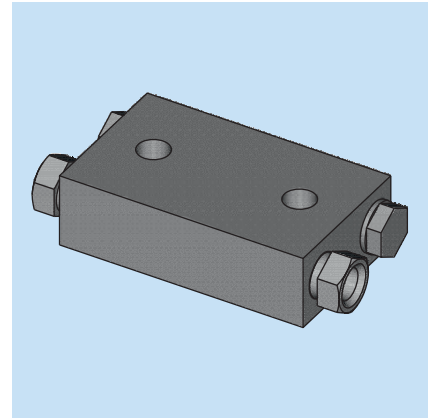
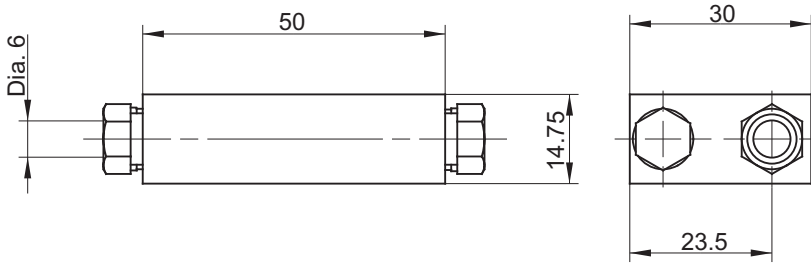


Part-No.	Material
4010 94 002	Steel zinc coated, yellow chromate



Middle element

for progressive distributor MX-F

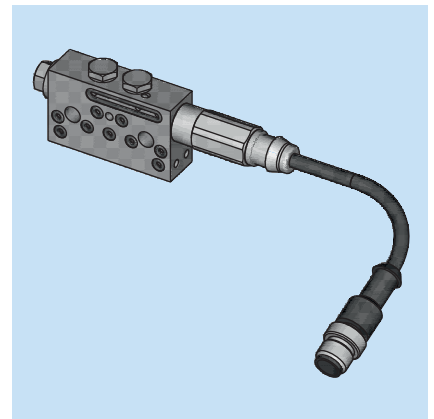
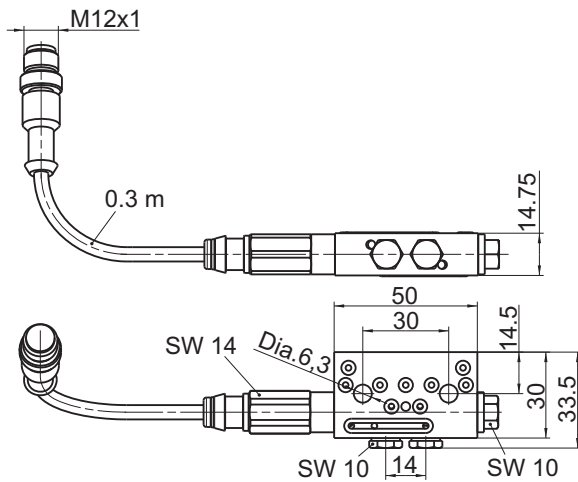


Part-No.	Designation	Delivery rate	Material
4010 95 101	MX-F 25	25 mm ³ /outlet	Steel
4010 95 102	MX-F 45	45 mm ³ /outlet	Steel
4010 95 103	MX-F 75	75 mm ³ /outlet	Steel
4010 95 104	MX-F 105	105 mm ³ /outlet	Steel

All parts made of steel are galvanized, yellow chromated.

Element 00

with attached proximity switch
for progressive distributor MX-F



Part-No.	Designation	Installation side of proximity switch	Model
4010 95 000	MX-F 00	left	Steel, galvanized
4010 95 001	MX-F 00	right	Steel, galvanized
4096 95 000	MX-F 00	left	rust-resistant
4096 95 001	MX-F 00	right	rust-resistant

Technical data of the proximity switch:

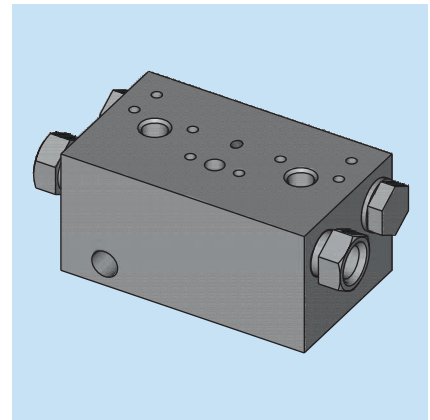
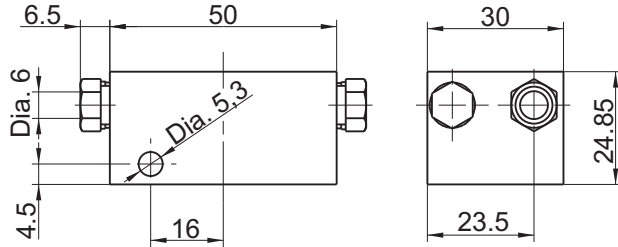
Connection: 4 pol. / M12x1 plug-in
Connecting method: PNP contact
Power rating: 10 mA
Current consumption: < 15 mA
Voltage: 10 to 60 V DC
Temperature range: -25° C to +70° C
perm. operating pressure: max. 350 bar for grease
Protection type: IP 67





End element

for progressive distributor MX-F

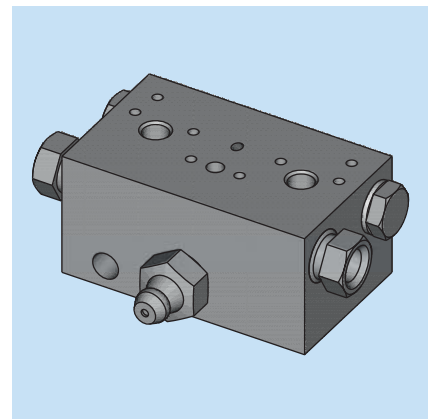
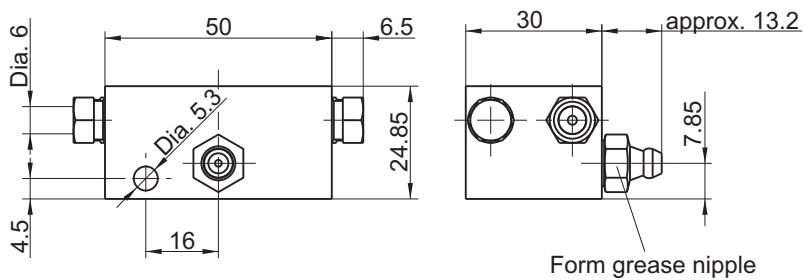


Part-No.	Designation	Delivery rate	Material
4010 96 101	MX-F 25	25 mm ³ /outlet	Steel
4010 96 102	MX-F 45	45 mm ³ /outlet	Steel
4010 96 103	MX-F 75	75 mm ³ /outlet	Steel
4010 96 104	MX-F 105	105 mm ³ /outlet	Steel

All parts made of steel are galvanized, yellow chromated.

End element

with form grease nipple,
for progressive distributor MX-F



Part-No.	Designation	Delivery rate	Material
4010 96 201 058	MX-F 25	25 mm ³ /outlet	Steel
4010 96 202 058	MX-F 45	45 mm ³ /outlet	Steel
4010 96 203 058	MX-F 75	75 mm ³ /outlet	Steel
4010 96 204 058	MX-F 105	105 mm ³ /outlet	Steel

All parts made of steel are galvanized, yellow chromated.



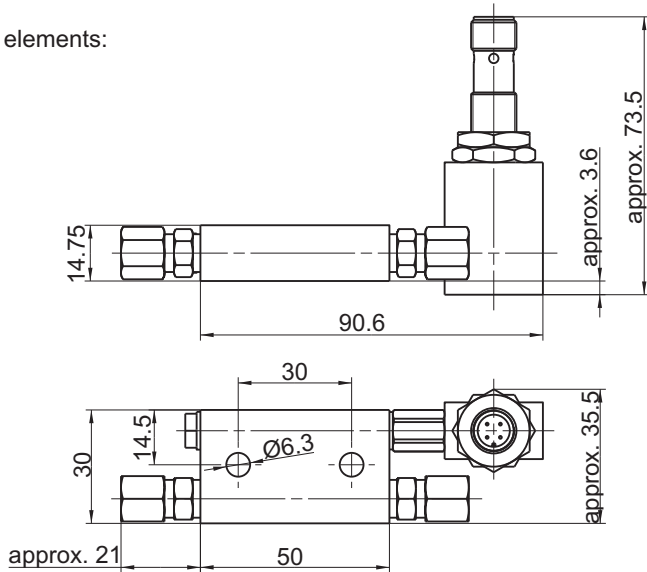


Elements

with attached proximity switch
for progressive distributor MX-F

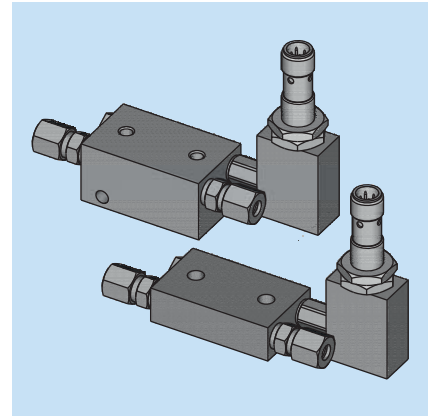
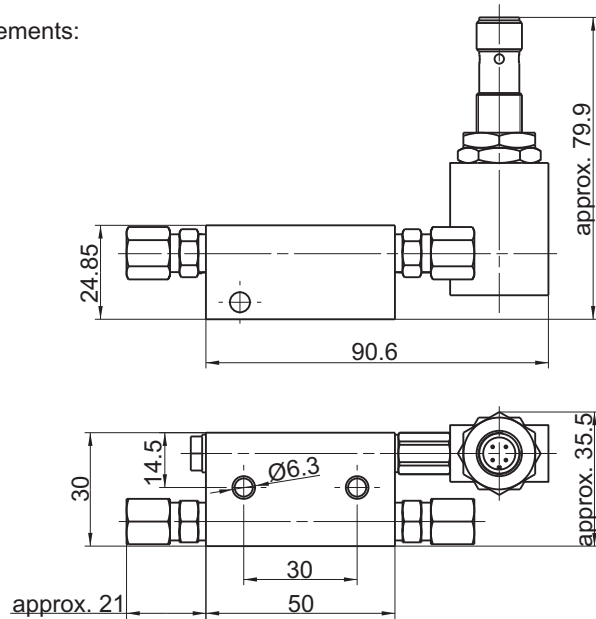
Pic. 1:

Middle elements:



Pic. 2:

End elements:



Technical data of the proximity switch:

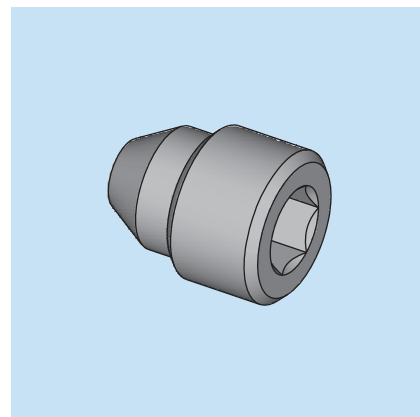
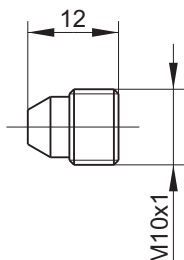
Connection:	4 pol. / M12x1 plug-in
Connecting method:	PNP contact
Power rating:	200 mA
Voltage:	10 to 60 V DC
Temperature range:	-40°C to +85°C
Function display:	LED yellow
Housing material:	stainless steel
Protection type:	IP 67

Part-No.	Designation	Delivery rate	Pic.	Model
4010 95 123 022	MX-F 75	75 mm ³ /outlet	1	Steel galvanized
4010 95 124 022	MX-F 105	105 mm ³ /outlet	1	Steel galvanized
4096 95 123 001	MX-F 75	75 mm ³ /outlet	1	rust-resistant
4096 95 124 001	MX-F 105	105 mm ³ /outlet	1	rust-resistant
4010 96 123 022	MX-F 75	75 mm ³ /outlet	2	Steel galvanized
4010 96 124 022	MX-F 105	105 mm ³ /outlet	2	Steel galvanized
4096 96 123 001	MX-F 75	75 mm ³ /outlet	2	rust-resistant
4096 96 124 001	MX-F 105	105 mm ³ /outlet	2	rust-resistant



Lock screw

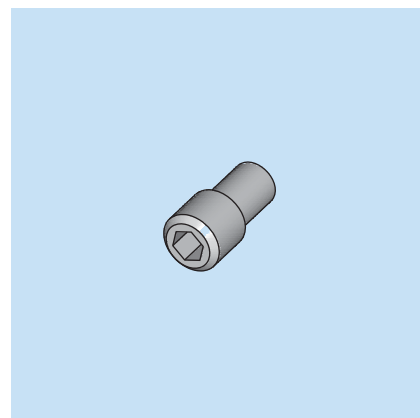
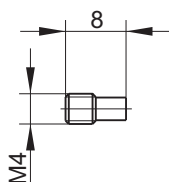
for progressive distributor MX-F



Article-nr.	Material
401096005000	Steel zinc coated, yellow chromate

Sealing screw

for progressive distributor MX-F



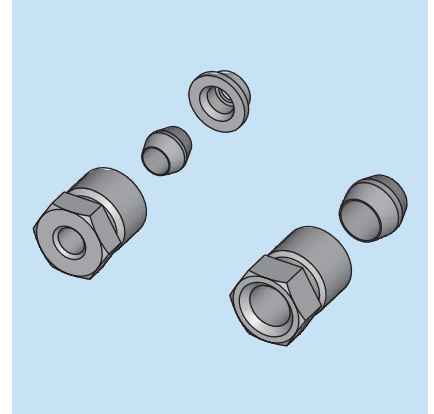
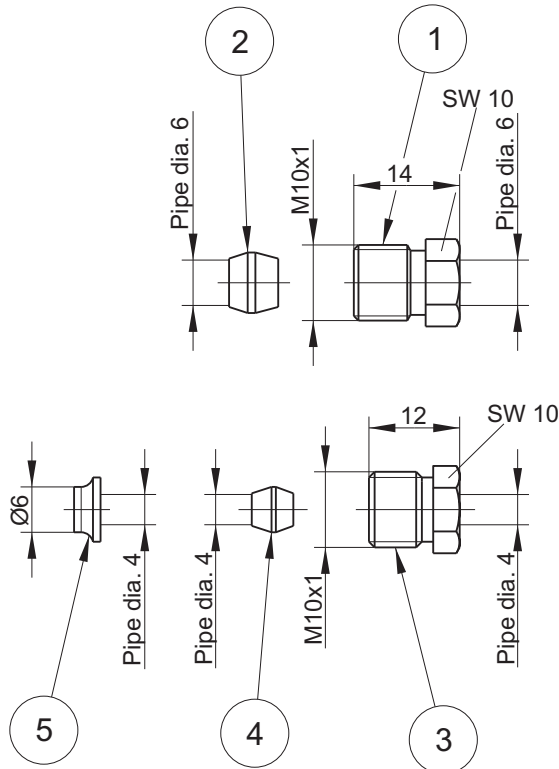
Article-nr.	Material
0802000455	Steel zinc coated, yellow chromate



Screw fittings for outlets

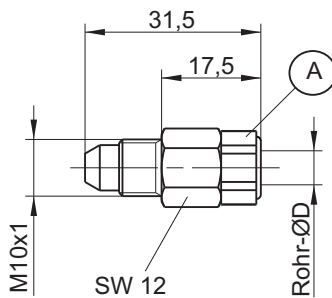
for progressive distributor MX-F

Union screw with olives



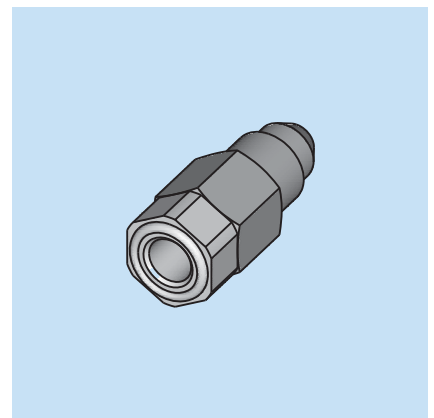
Article-nr.	Name	for Pipe dia.	Part-No.	Material
0802 000 190	Union screw	6	1	Steel zinc coated, yellow chromate
09 03862 0023	Olive	6	2	Brass
0802 000 311	Union screw	4	3	Steel zinc coated, yellow chromate
09 03862 0013	Olive	4	4	Brass
0802 000 310	Reducer ring dia. 6 - dia. 4	4	5	Steel

Plug connections



A
 Plug-type connection
 for pipe dia. 6
 SW 12
 Article-nr.: 0406 0850

A
 Plug-type connection
 for pipe dia.4
 SW 12
 Article-nr.: 0406 0851



Article-nr.	Pipe dia. D
FAZ03605-01	4
FAZ03605-00	6

Material: Steel zinc coated, yellow chromate / Steel

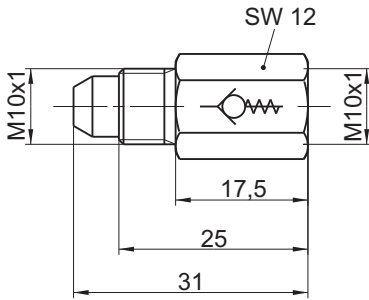
8.5.7



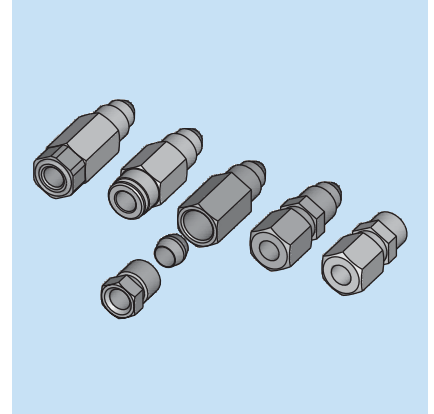
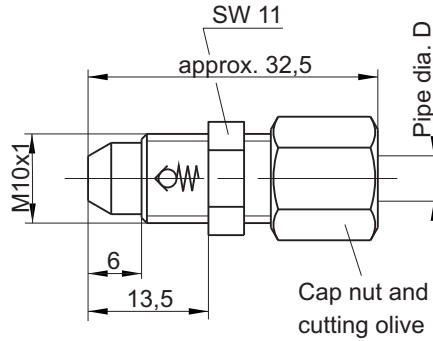
Non-return valves

for progressive distributor MX-F

Pic. 1:



Pic. 2:

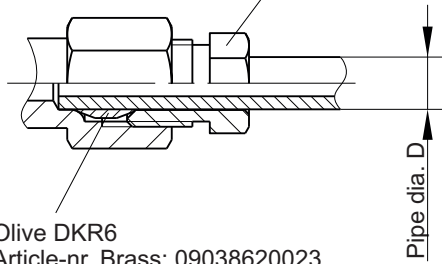


The lubricant line is fastened by means of an olive and an union screw at the non-return valve fig. 1.

Cap screw ÜS6 M10x1

Article-nr. Steel zinc coated, yellow chromate: 0802000190

Article-nr. High-grade Steel: F0060/19-08

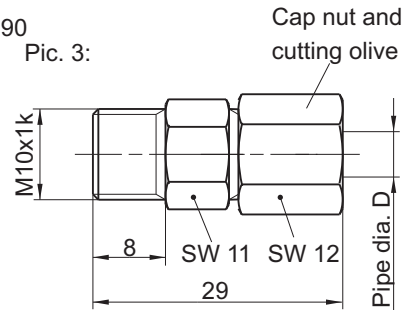


Olive DKR6

Article-nr. Brass: 09038620023

Article-nr. High-grade Steel: 09038620026

Pic. 3:



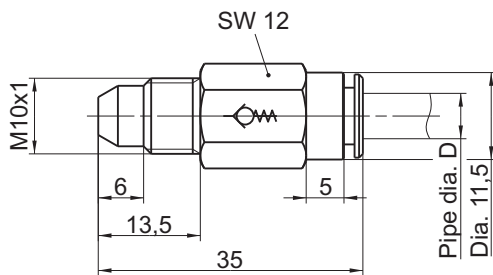
Pic. 5:

with plug-type connection, Type HP
soluble without tool

Material: Steel, zinc coated - Brass, nickel-plated;

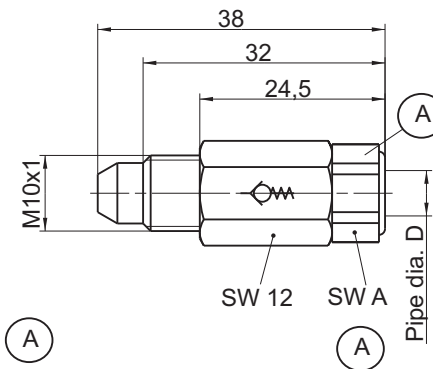
Pressure range: max. 150 bar

Temperature range: -20°C to +70°C



Pic. 4:

with plug-type connection, Type BEKA



Plug-type connection
for pipe dia.4

SW 12

Article-nr.: 0406 0851

Plug-type connection
for pipe dia.4

SW 12

Article-nr.: 0406 0851

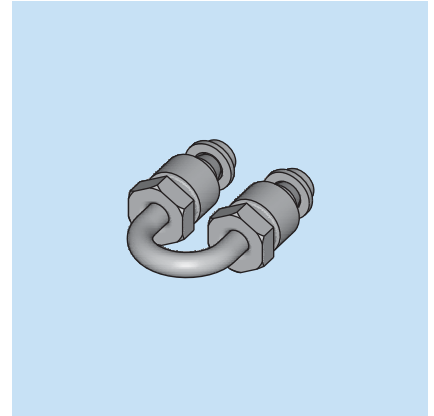
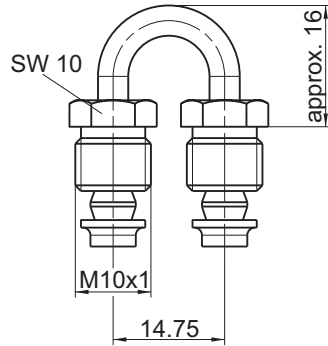
Article-nr.	Pipe dia. D	Pic.	Material
4010960040000	6	1	Steel
4010960040009	6	1	High-grade Steel
0438000179	6	2	Steel
0438000314	6	3	High-grade Steel
4010960040008	4	4	Steel
4010960040007	6	4	Steel
4010960040012	6	5	Steel - Brass

All parts made of steel are galvanized, yellow chromated.



Pipe bridge

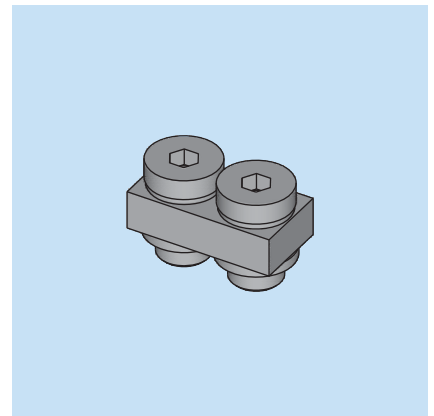
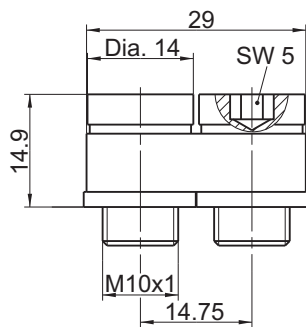
for progressive distributor MX-F



Part-No.	Material
4010960010011	Steel zinc coated, yellow chromate
4010960010014	High-grade steel

Distributor bridge

for progressive distributor MX-F
without outlet, without non-return valve



Part-No.	Material
4010960010013	Steel zinc coated, yellow chromate
4096960010013	stainless

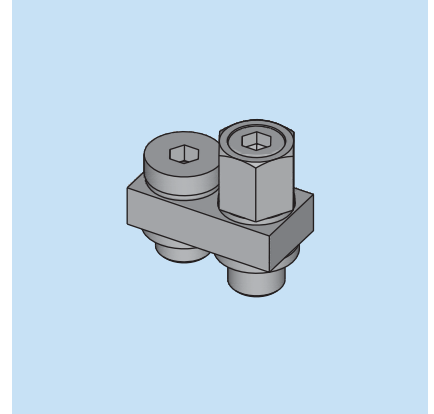
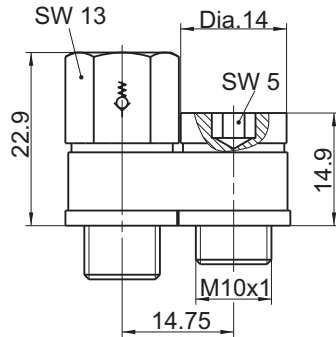
© BEKA 2013 All rights reserved!

Subject to alterations!



Distributor bridge

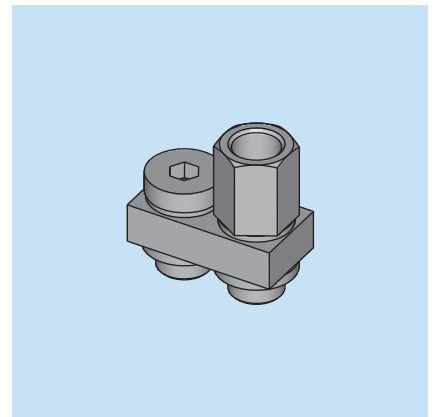
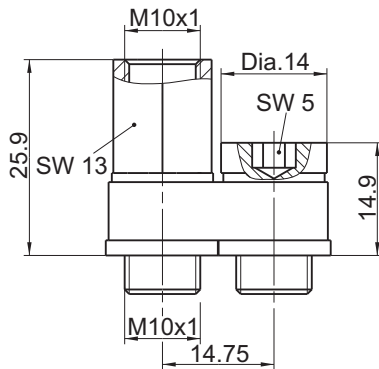
for progressive distributor MX-F
without outlet.with non-return valve



Part-No.	Material
4010960010016	Steel zinc coated, yellow chromate
4096960010016	stainless

Distributor bridge

for progressive distributor MX-F
with outlet



Part-No.	Material
4010960010012	Steel zinc coated, yellow chromate
4096960010020	stainless



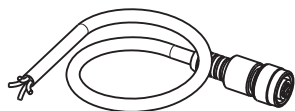
Power cord with connector 4-pole

for connecting external signal transmitters

Connection cable no. 1:

for the connection of an installed proximity switch of the progressive distributor at the external control unit or at a control unit with Hirschmann plug.

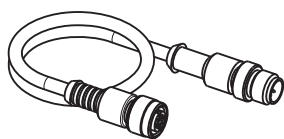
Pic. 1:



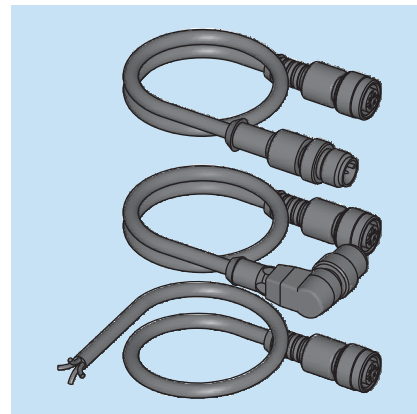
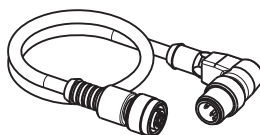
Connection cable No. 2:

for the connection of an installed proximity switch of the progressive distributor at the external control unit BEKA-troniX1 or EP-tronic

Pic. 2:



Pic. 3:



Part-No.	Bush	Plug	Power cord length	Pic.
1000912458	M12x1 straight	without	2 m	1
1000911237	M12x1 straight	without	5 m	1
1000912457	M12x1 straight	without	10 m	1
1000912464	M12x1 straight	M12x1 straight	2 m	2
1000912465	M12x1 straight	M12x1 straight	5 m	2
1000912467	M12x1 straight	M12x1 angular	2 m	3
1000912468	M12x1 straight	M12x1 angular	5 m	3



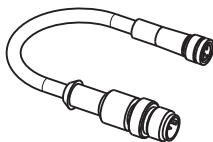
Adapter cable with plug 4-pole

for connecting proximity switch and control unit

Adapter cable no. 1:

for connecting proximity switch with threaded connection M8x1, with a control unit with threaded connection M12x1.

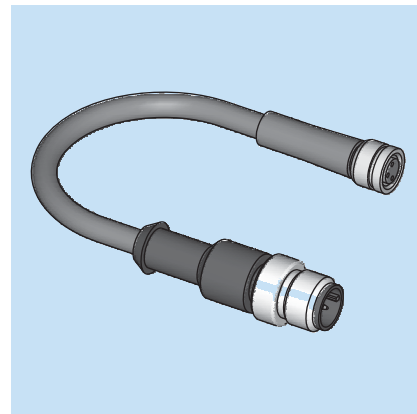
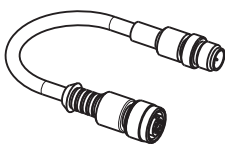
Pic. 1:



Adapter cable no. 2:

for connecting proximity switch with threaded connection M12x1 with an already installed cable with threaded connection M8x1.

Pic. 2:

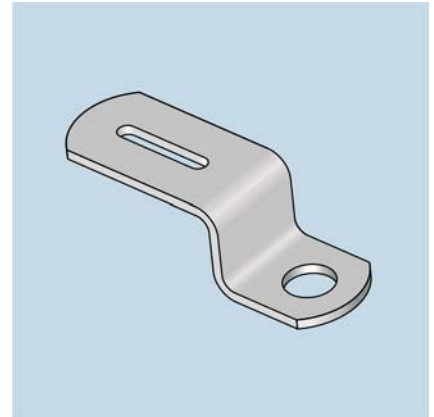
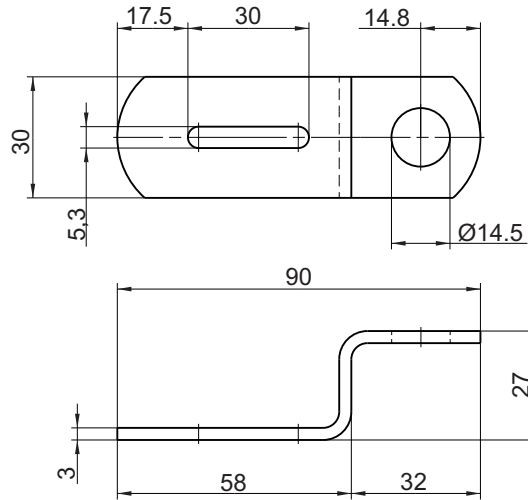


Part-No.	Bush	Plug	Power cord length	Pic.
1000912495	M8x1	M12x1	0,3 m	1
1000912496	M12x1	M8x1	0,3 m	2



Mounting Bracket

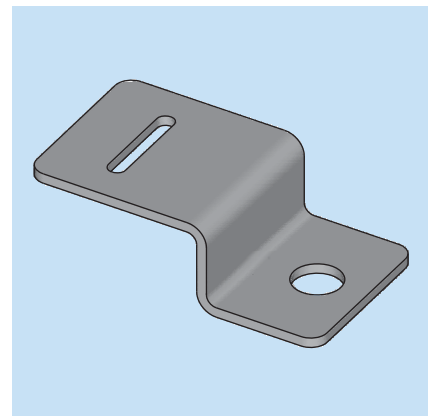
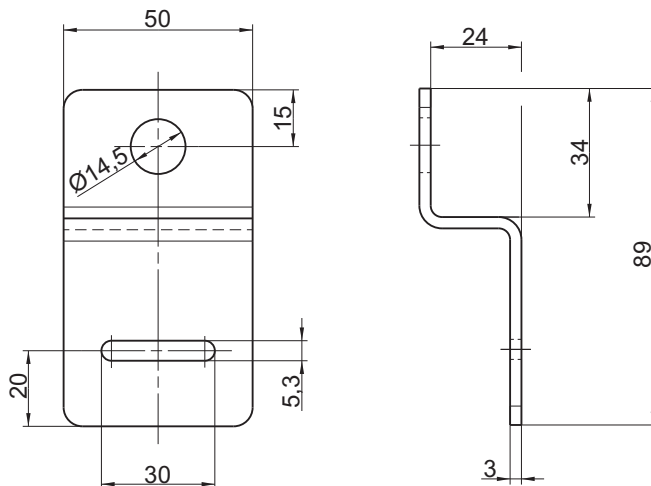
for MX-F Distributor



Part-No.	Material
0800800010	Steel zinc coated, yellow chromate

Mounting Bracket

for MX-F Distributor

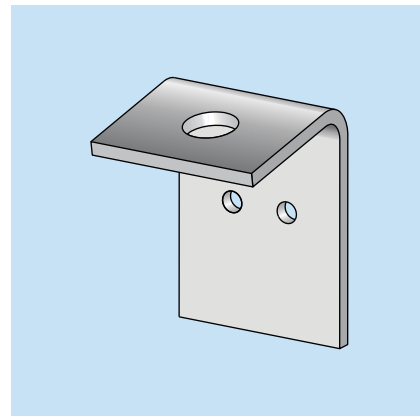
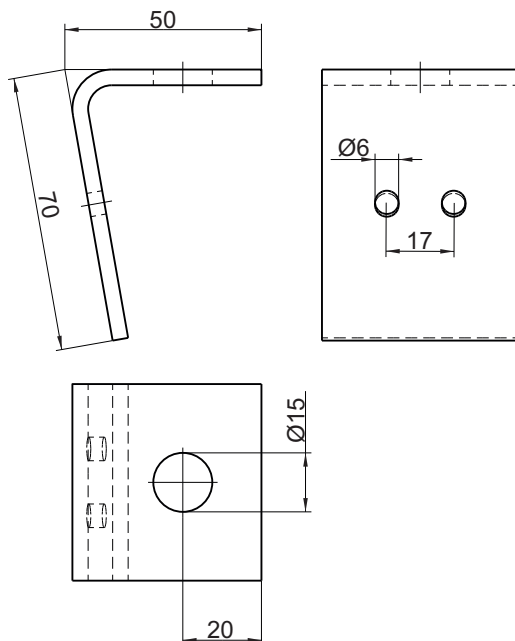


Part-No.	Material
0800801398	Steel zinc coated, yellow chromate



Mounting Bracket

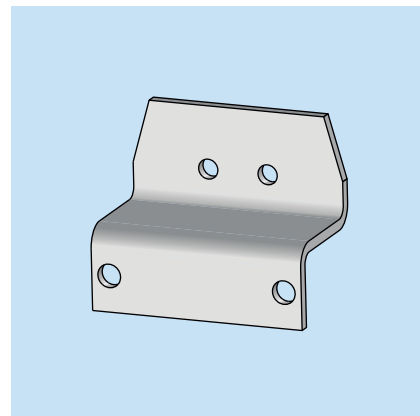
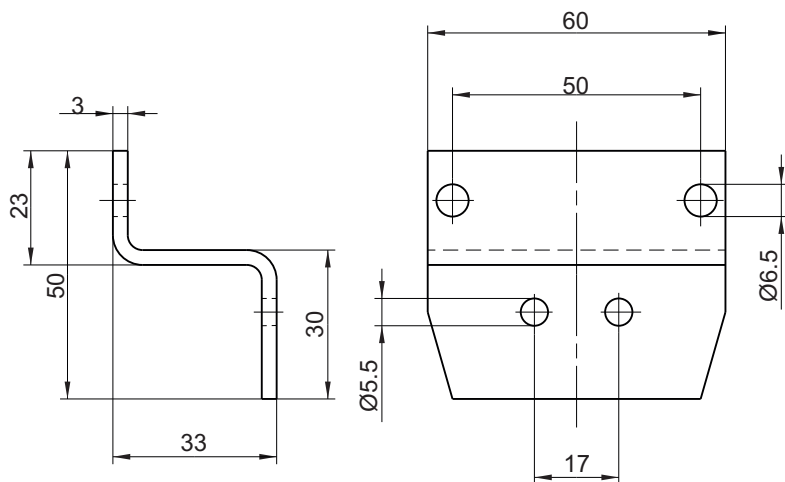
for MX-F Distributor



Part-No.	Material
0800800241	Steel zinc coated, yellow chromate

Mounting Bracket

for MX-F Distributor



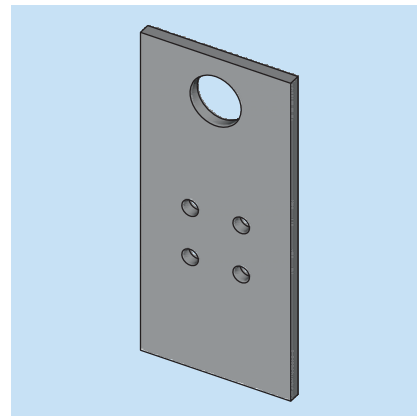
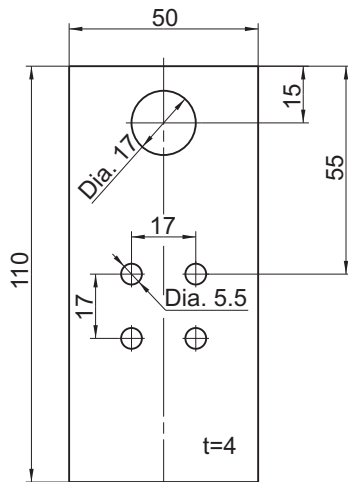
Part-No.	Material
0800800220	Steel zinc coated, yellow chromate

Subject to alterations! © BEKA 2013 All rights reserved!



Mounting plate

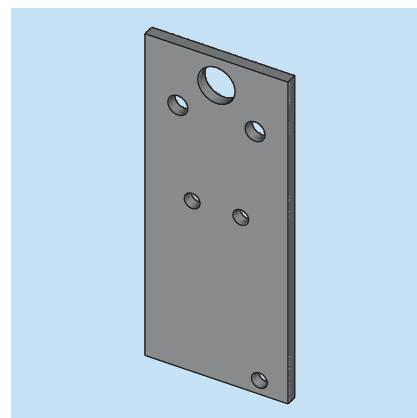
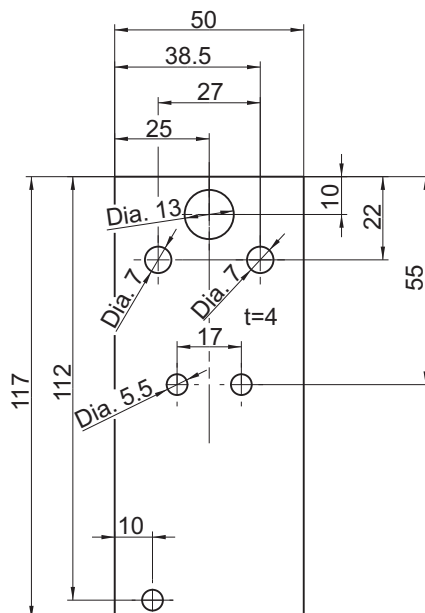
for MX-F distributor



Part-No.	Material
0800801319	Steel zinc coated, yellow chromate

Mounting plate

for MX-F distributor



Part-No.	Material
0800800776	Steel zinc coated, yellow chromate

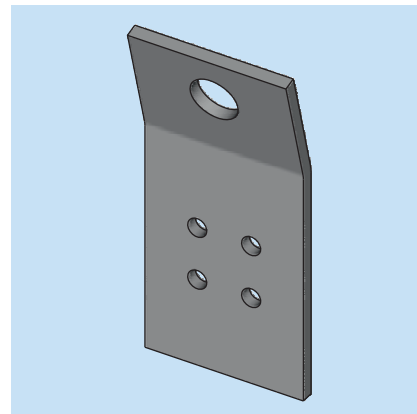
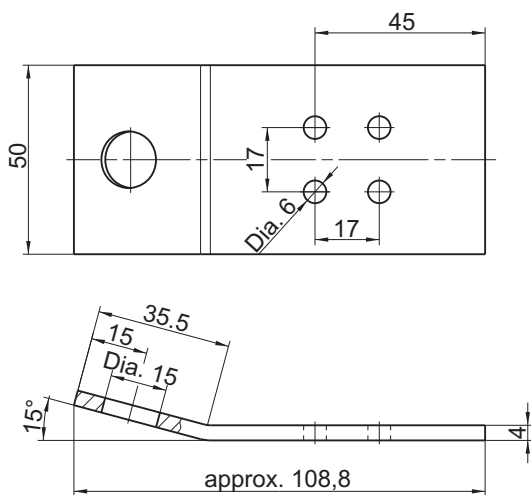
© BEKA 2013 All rights reserved!

Subject to alterations!



Mounting bracket

for MX-F distributor

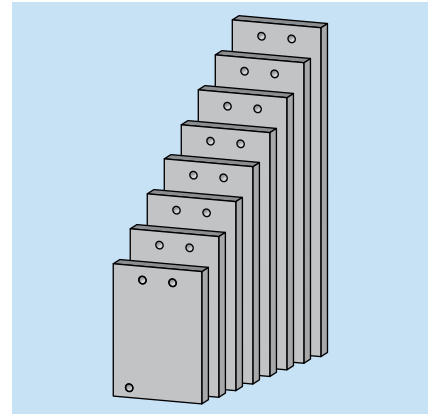
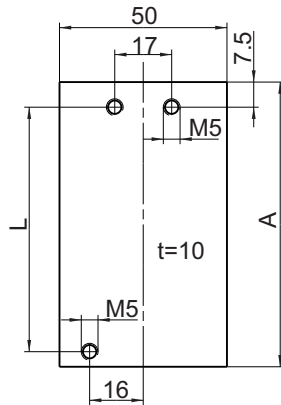


Part-No.	Material
0800801627	Steel zinc coated, yellow chromate



Mounting Plates (welding)

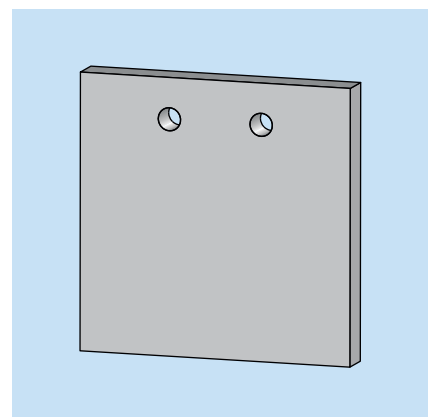
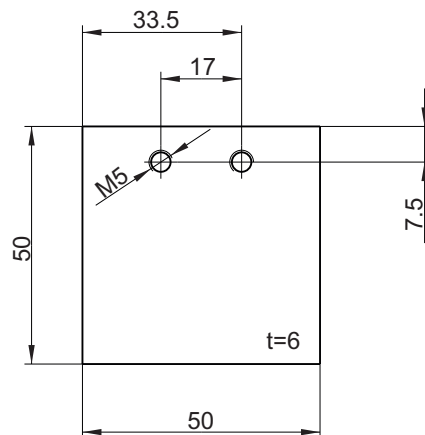
for MX-F Distributor



Part-No.	for Distributor MX-F X/X	A	L	Material
FWZ02259-00 001	3/X	70	57.2	Steel
FWZ02259-00 002	4/X	85	72.0	Steel
FWZ02259-00 003	5/X	100	86.7	Steel
FWZ02259-00 004	6/X	115	101.5	Steel
FWZ02259-00 005	7/X	129	116.2	Steel
FWZ02259-00 006	8/X	144	131	Steel
FWZ02259-00 007	9/X	159	145.7	Steel
FWZ02259-00 008	10/X	174	160.5	Steel

Short Mounting Plate (welding)

for MX-F Distributors

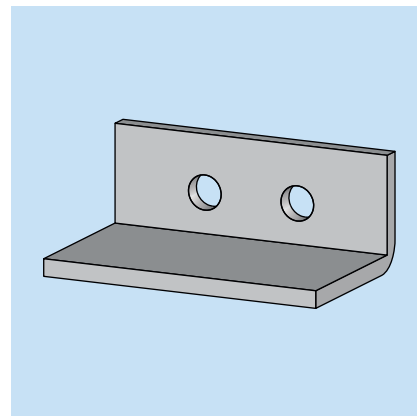
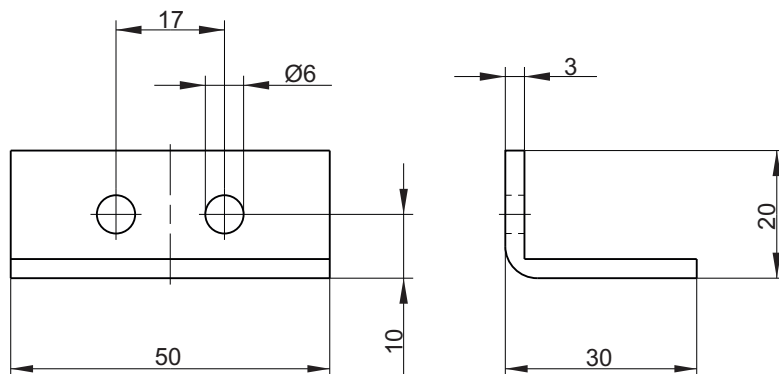


Part-No.	Material
0800800636	Steel zinc coated, yellow chromate



Angle Mounting Plate (welding)

for MX-F Distributor



Part-No.	Material
0800800571	Steel zinc coated, yellow chromate

