

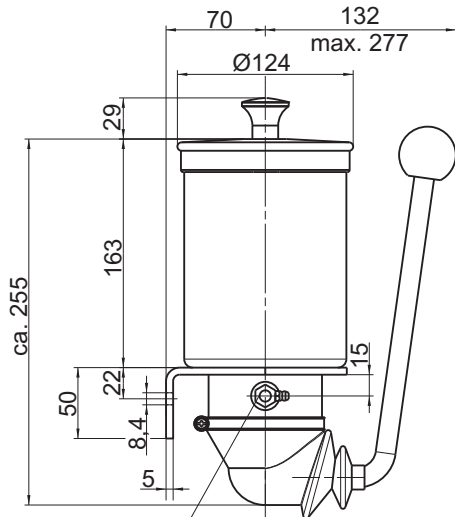
8.4 Manual pumps and filling presses

Table of Contents	Page
Grease manual pump type FHX-2	8.4.2
Hand lever grease pump	8.4.3
Hand lever grease pump FHX	8.4.4
Filling press	8.4.5
Single hand filling press	8.4.5

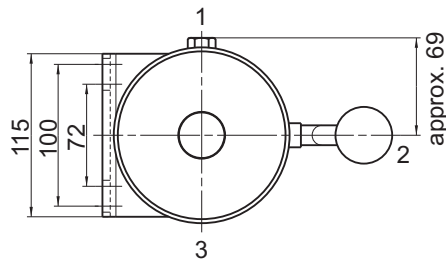


Grease manual pump type FHX-2

according to AZ-1838-00



Filling nipple H3 DIN 71412



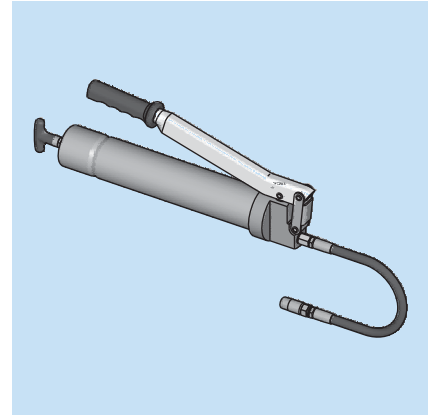
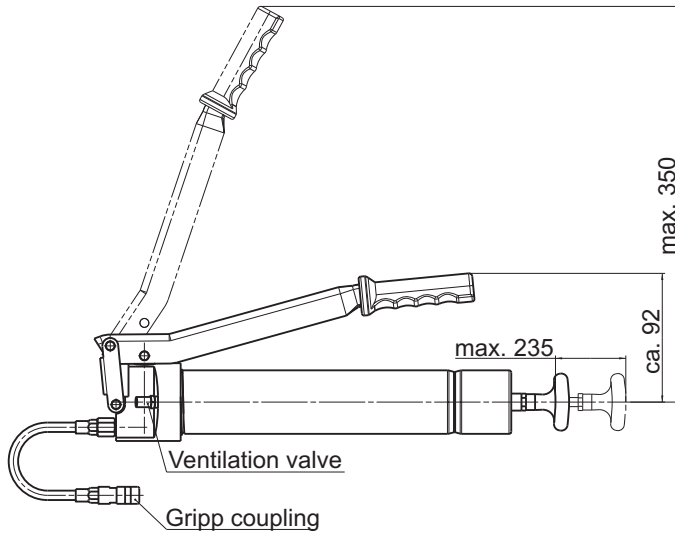
Technical data:

Pressure:	max. 300 bar
Output rate:	max. 1,5 cm ³ /stroke
Reservoir capacity:	1,2 l
Pressure connection- \varnothing :	6 mm
Pressure outlet position:	1
Position of lever:	2
Position of filling nipple:	3
Medium:	greases up to NLGI-cl. 2
Level monitoring:	visual, by transparent reservoir

Article-no.	Filling nipple
2534.1570001	included



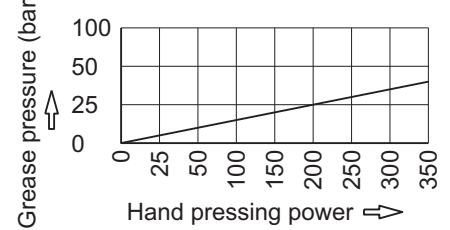
Hand lever grease pump at FAZ02255-06
for filling electric pump EP-1 and PICO
suitable for grease cartridges according to DIN 1284



Technical data:

- Pressure: max. 40 bar
- Delivery rate: max. 8 cm³/stroke
- Cartridge volume: 400 g
- Volume w/o cartridge: 500 cm³
- max. tube outside diameter: 53,5 mm
- min. tube inside diameter: 51 mm
- Delivery media: Greases up to NLGI-KI. 2

Pressure - Power - Diagram

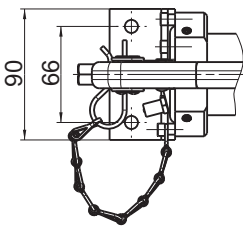
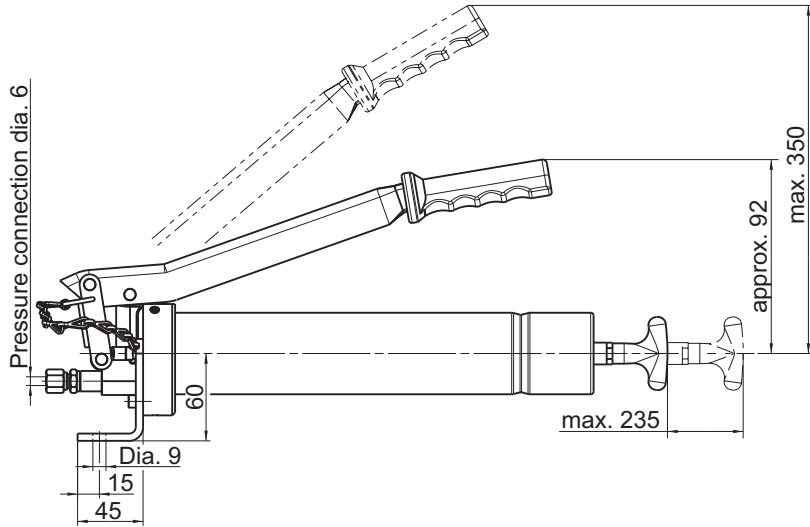


Part-No.	Grease volume
21590080008	max. 500 cm ³



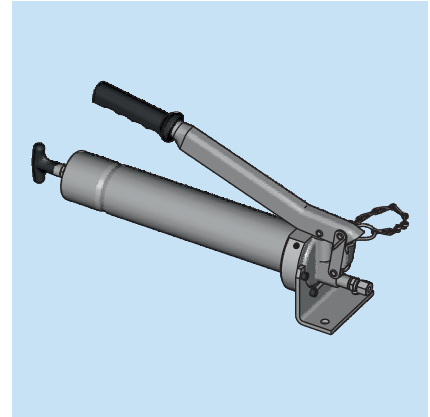
Hand lever grease pump FHX at FAZ01821-00

for filling electric pump EP-1 and PICO
suitable for grease cartridges according to DIN 1284

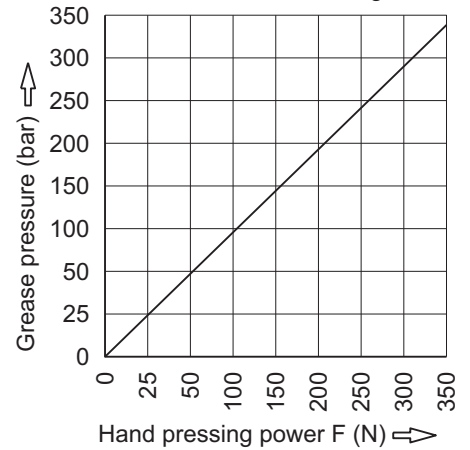


Technical data:

- Pressure: max. 350 bar
- Delivery rate: max. 2 cm³/stroke
- Cartridge volume: 400 g
- Volume w/o cartridge: 500 cm³
- max. tube outside diameter: 53,5 mm
- min. tube inside diameter: 51 mm
- Delivery media: Greases up to NLGI-KI. 2



Pressure - Power - Diagram

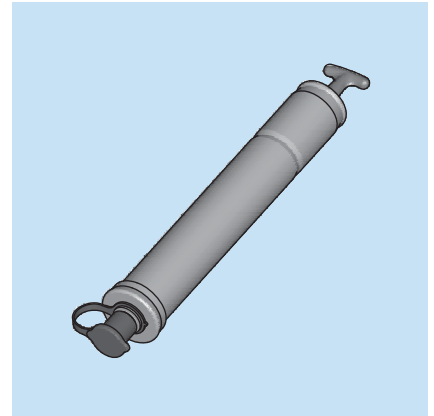
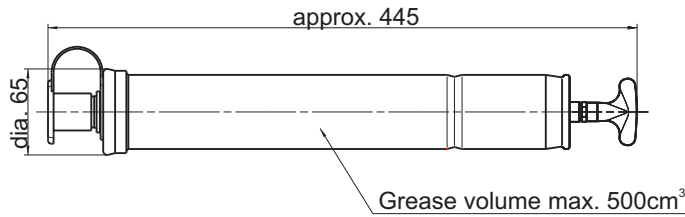


Part-No.	Grease volume
2081 03000	max. 500 cm ³



Filling Press for EP-1

suitable for grease cartridges according to DIN 1284



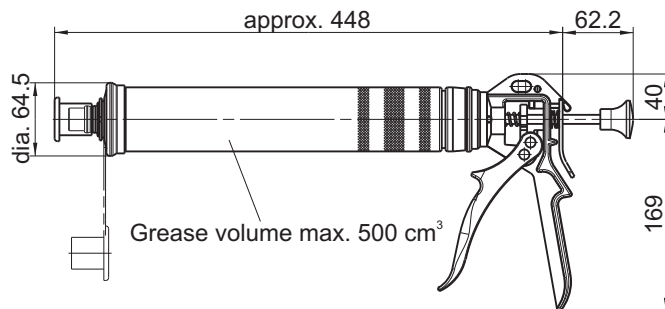
Technical data:

- Cartridge volume: 400 g
- Volume w/o cartridge: 500 cm³
- max. tube outside diameter: 53,5 mm
- min. tube inside diameter: 51 mm
- Delivery media: Greases up to NLGI-cl. 2

Part-No.	Grease volume
208303026	max. 500 cm ³

Single hand-filling press

suitable for grease cartridges according to DIN 1284



Technical data:

- Output rate: ca. 9 cm³ to 10 cm³ per full stroke
- Cartridge volume: 400 g
- Volume w/o cartridge: 500 cm³
- max. tube outside diameter: 53,5 mm
- min. tube inside diameter: 51 mm
- Delivery media: Greases up to NLGI-cl. 2

Part-No.	Grease volume
20830001	max. 500 cm ³

