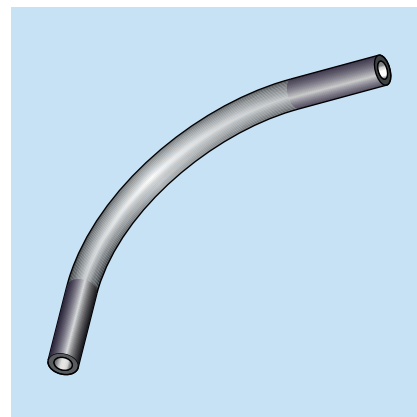
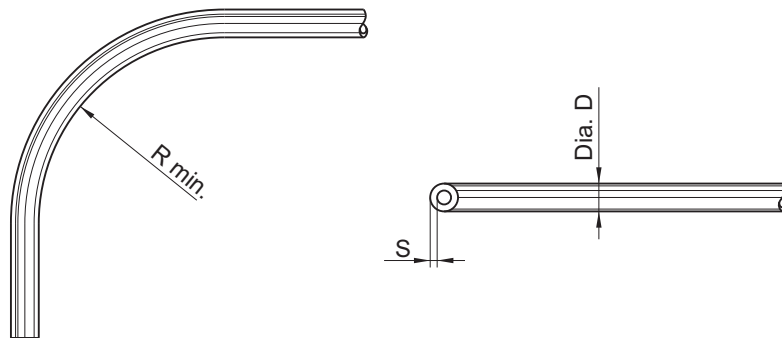


8.8 Hoses, tubes and accessories

Table of Contents	Page
Tubes, hoses and pipes	
Polyamide tube	8.8.2
High pressure hose	8.8.2
Steel pipes	8.8.3
Polyamide tube for malfunction indicator on pressure relief valve	8.8.3
Steel pipes dia. 10x3, straight	8.8.4
Steel pipes dia. 10x3, bent one-side	8.8.4
Steel pipes dia. 10x3, bent both-side	8.8.5
Sleeves and pipe sockets	
Sleeves	8.8.6
Straight pipe socket, for the assembly of a high pressure hose Ø8,6x4	8.8.7
Pipe socket bend by 45° for assembly of a high pressure hose Ø8,6x4	8.8.8
Pipe socket bend by 90° for assembly of a high pressure hose Ø8,6x4	8.8.9
Insert for Ferrule, straight for assembly of a High Pressure Hose Dia. 11.2 x 6.5	8.8.10
Pipe socket bend by 45° for assembly of a High Pressure Hose Dia. 11.2 x 6.5	8.8.10
Pipe socket bent by 90° for assembly of a High Pressure Hose Dia. 11.2 x 6.5	8.8.11
Ferrules and Nipples	
Ferrule DN4	8.8.12
Nipple DN 4	8.8.12

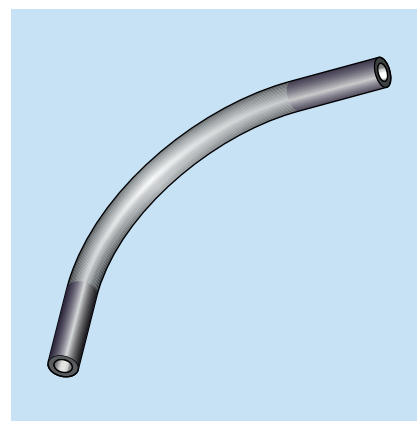
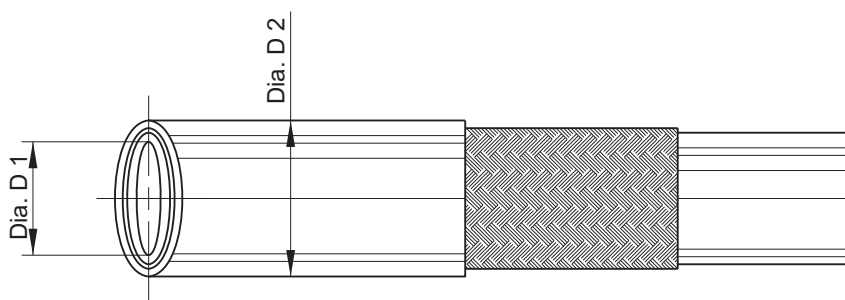


Polyamide tube



Part-No.	Dia. D	S	min. bending radius R	Type	Viscous oil filled	Material
1001 20 075	4	0.85	40	hard	with	Polyamide
1001 20 040	4	0.85	40	soft	with	Polyamide
1001 20 039	4	0.85	40	hard	without	Polyamide
1001 20 041	4	0.85	40	soft	without	Polyamide
1001 20 100	6	1.5	40	hard	with	Polyamide
1001 20 101	6	1.5	40	hard	without	Polyamide

High Pressure Hose



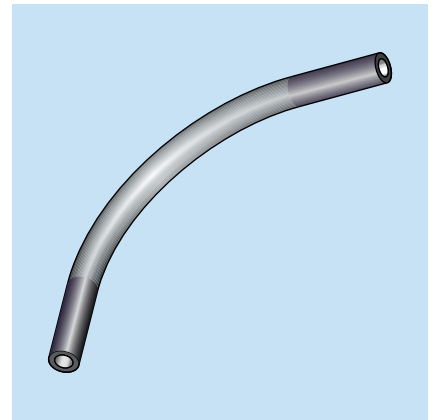
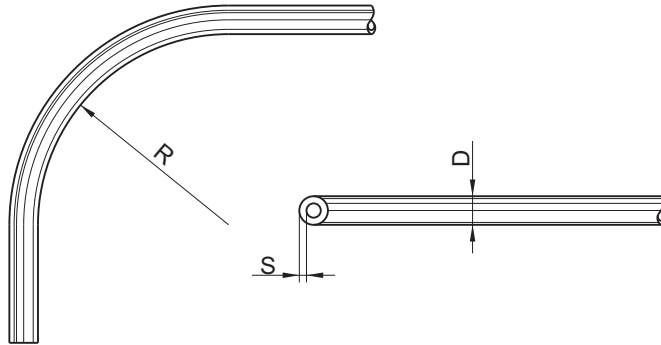
Part-No.	Dia. D 1	Dia. D 2	Type	Grease filled	Material
1001 20 200	4	8.6	straight	with	Plastic / Synthetic Net
1001 20 205	4	8.6	spiral	with	Plastic / Synthetic Net
1001 20 201	4	8.6	straight	without	Plastic / Synthetic Net
1001 20 206	4	8.6	spiral	without	Plastic / Synthetic Net
1001 20 265	6.5	11.2	straight	with	Plastic / Synthetic Net
1001 20 266	6.5	11.2	straight	without	Plastic / Synthetic Net

Subject to alterations! © BEKA 2013. All rights reserved!



Steel Pipe

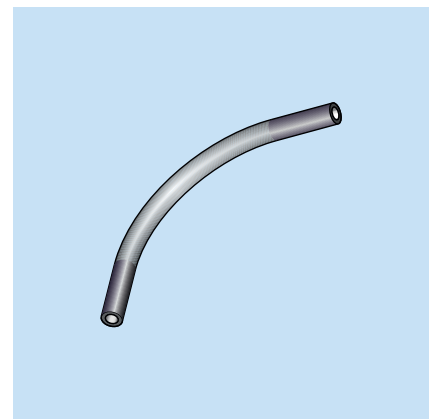
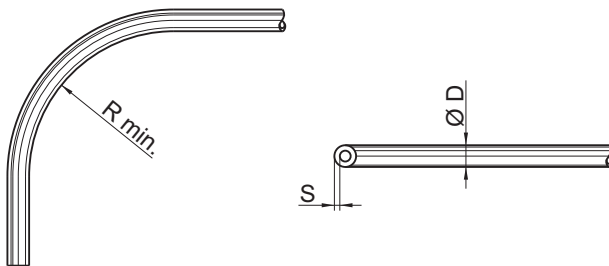
DIN 2391



Part-No.	D	S	min. bending radius R	Material
0612 020 002	4	0.7	5	Steel zinc coated
0612 020 001	6	1	11	Steel zinc coated
0612 020 017	8	1	15	Steel zinc coated
0678 022 223	10	3	30	Steel zinc coated

Polyamide tube

for grease return into reservoir at malfunction indicator on pressure relief valve



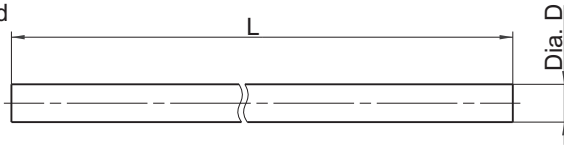
Part-No.	ØD	S	min. bending radius R	Type	Grease filled	Length	Material
1001 20 068	6	1	30	soft	without	0,1 m	Polyamide



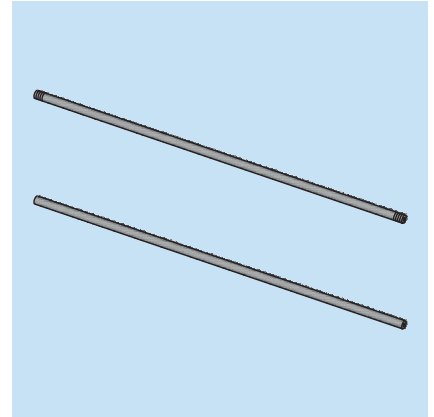
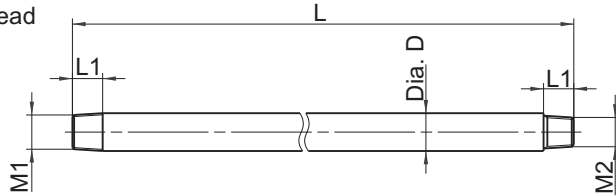
Steel pipe dia. 10x3

straight, at FAZ04664-00

Pic. 1:
without thread



Pic. 2:
with thread

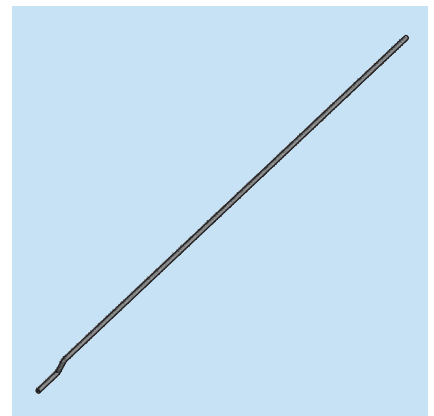
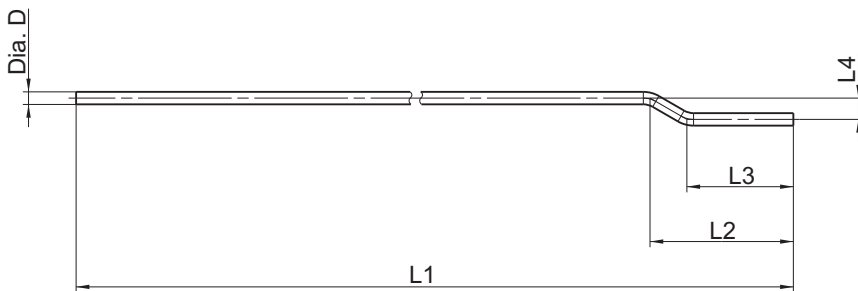


Part-No.	Pipe dia. D	L	M1	M2	L1	Pic.	Material
1001030164	10x3	500	--	--	--	1	Steel
1001030165	10x3	1000	--	--	--	1	Steel
1001030166	10x3	1600	--	--	--	1	Steel
FWZ04514-00	10x3	800	M10x1k	M8x1k	8	2	Steel
FWZ04514-01	10x3	480	M10x1k	M10x1k	8	2	Steel
FWZ04514-02	10x3	600	M10x1k	M10x1k	8	2	Steel
0800160003	10x3	600	M10x1k	M10x1k	8	2	1.4301

All Parts made of steel are zinc coated and yellow chromated.

Steel pipe dia. 10x3

bent one-side at FAZ03954-12



Part-No.	Pipe dia. D	L1	L2	L3	L4	Material
0800600056	10x3	1600	114.9	85.4	17.1	Steel zinc coated, yellow chromated

© BEKA 2013 All rights reserved!

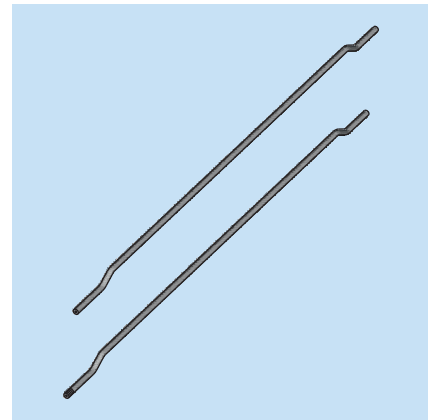
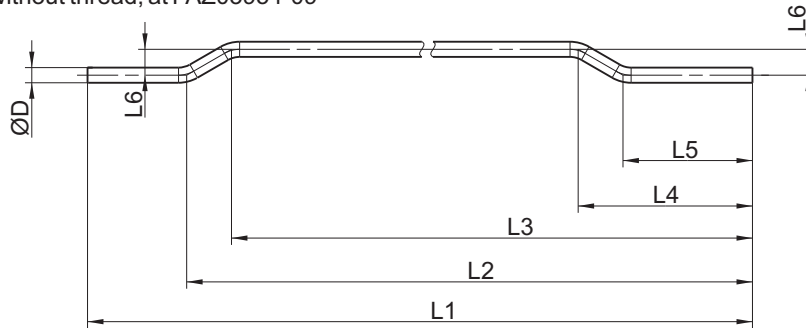
Subject to alterations!



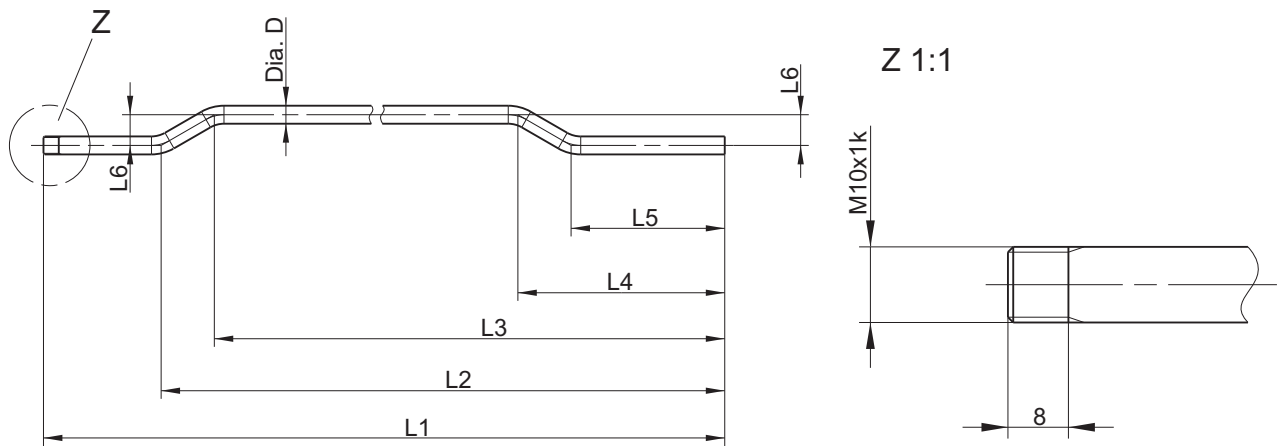
Steel pipe dia. 10x3

bent both-side

Pic. 1:
without thread, at FAZ03954-09



Pic. 2:
with thread, at FAZ03954-10 and FAZ03954-11

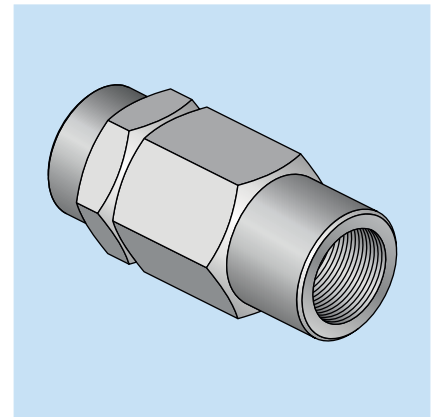
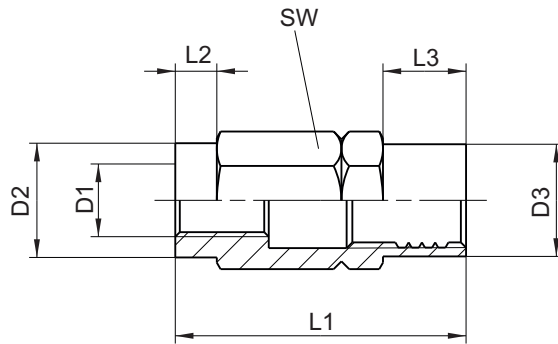


Part-No.	Pipe dia. D	L1	L2	L3	L4	L5	L6	Pic.	Material
0800600066	10x3	970	905	875	115	85	17	1	Steel
0800600054	10x3	800	734.6	705.1	114.9	85.4	17.1	2	Steel
0800600055	10x3	970	904.6	875.1	114.9	85.4	17.1	2	Steel

All Parts made of steel are zinc coated and yellow chromated.



Threaded ferrule



Part-No.	D1	D2	D3	L1	L2	L3	SW	for HP-Hose	Material
1001 21 200	M7x0.75	11	10.8	28	4	8	12	8.6x4	Steel
1001 21 197	M7x0.75	10	11	28	2	8	12	8.6x4	1.4305
1001 21 305	M9x1	14	16	35.8	4	9	17	11.2x6,5	Steel
1001 21 347	M9x1	14	16	35.8	4	9	17	11.2x6,5	1.4305

All parts made of steel are zinc coated and yellow chromated.

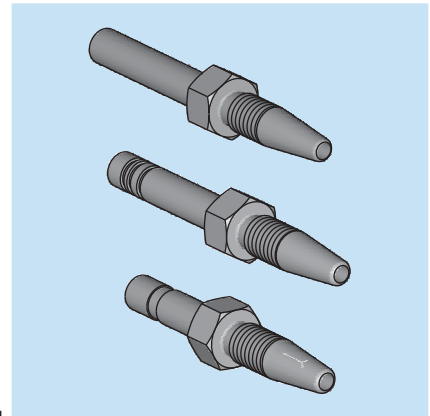
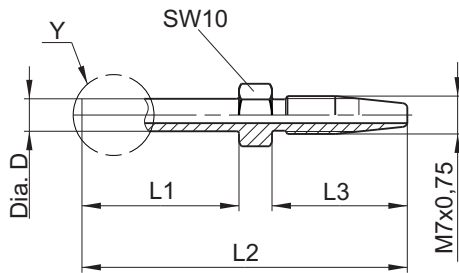




Straight pipe socket,

for the assembly of a high pressure hose Ø8,6x4

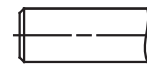
Dimensions:



Part-no.	Dia. D	L1	L2	L3	Detail	M	Material
1001 21 218	5	30	64	28	Y	M7x0.75	Steel
1001 21 189	6	18	49.1	25	Y	M7x0.75	Steel
1001 21 380	6	18	49.1	25	Y	M7x0.75	1.4305
1001 21 186	6	20	51.1	X	Y	M7x0.75	Steel
1001 21 190	6	24	55.1	25	Y	M7x0.75	Steel
1001 21 201	6	30	61.1	25	Y	M7x0.75	Steel
1001 21 196	6	30	61.1	25	Y	M7x0.75	1.4305
1001 21 198	6	30	61.1	25	Y	M7x0.75	1.4571
1001 21 171	8	22	53	25	Y	M7x0.75	Steel
1001 21 173	8	30	61	25	Y	M7x0.75	Steel
1001 21 219	10	30	64	28	Y	M7x0.75	Steel
1001 21 220	10	30	64	28	Y	M7x0.75	1.4305
1001 21 282	6	24	55.1	25	Y1	M7x0.75	Steel
1001 21 252	6	30	61.1	25	Y1	M7x0.75	Steel
1001 21 253	6	30	61.1	25	Y1	M7x0.75	1.4305
1001 21 382	6	18	49.1	25	Y2	M7x0.75	Steel
1001 21 191	6	30	61.1	25	Y2	M7x0.75	Steel
1001 21 210	6	21	52.1	25	Y3	M7x0.75	Steel

Version for cutting ring-/olive

Y



Version for plug-type connection HP detachable without tools

Y1



Version for BEKA-plug-type connection detachable with tools

Y2



Version for plug-type connection Camozzi detachable without tool

Y3



All Parts made of steel are zinc coated and yellow chromated.

© BEKA 2013 All rights reserved!

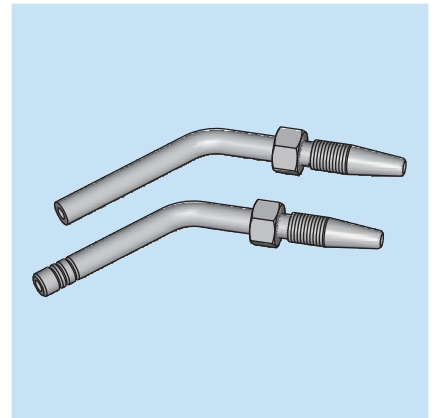
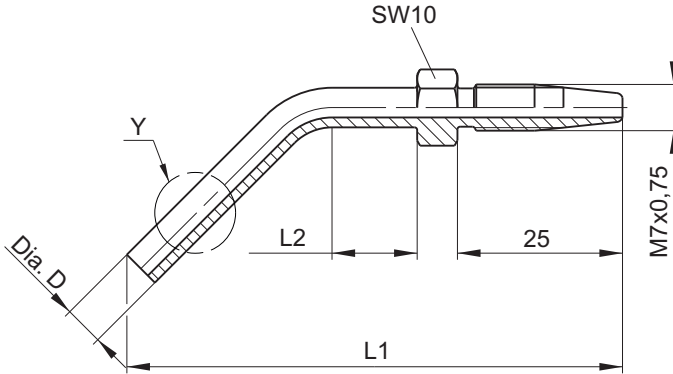
Subject to alterations!



Pipe socket bend by 45°

for assembly of a high pressure hose Ø8,6x4

Dimensions:

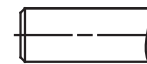


Part-no.	Dia. D	L1	L2	Detail	M	Material
1001 21 227	6	68.3	18.5	Y	M7x0.75	Steel
1001 21 206	6	79.1	28.4	Y	M7x0.75	Steel
1001 21 187	6	79.1	28.4	Y	M7x0.75	1.4305
1001 21 215	6	93.2	43.3	Y	M7x0.75	Steel
1001 21 175	8	68.5	13	Y	M7x0.75	Steel
1001 21 177	8	76.5	13	Y	M7x0.75	Steel
1001 21 254	6	79.1	28.4	Y1	M7x0.75	Steel
1001 21 383	6	79.1	28.4	Y2	M7x0.75	Steel

All Parts made of steel are zinc coated and yellow chromated.

Version for cutting ring-/olive

Y



Version for plug-type connection HP detachable without tools

Y1



Version for BEKA-plug-type connection detachable with tools

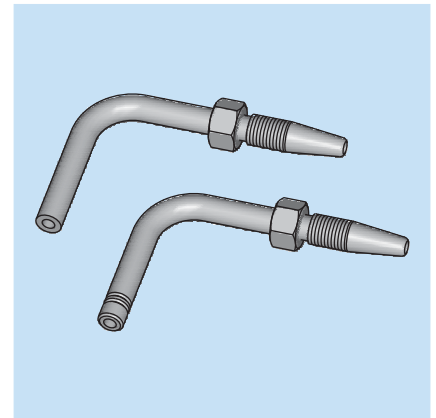
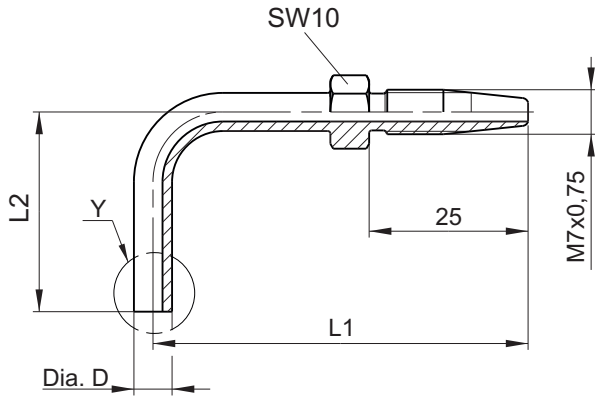
Y2



Pipe socket bend by 90°

for assembly of a high pressure hose Ø8,6x4

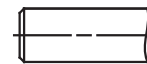
Dimensions:



Part-no.	Dia. D	L1	L2	Detail	M	Material
1001 21 208	6	45.1	20.7	Y	M7x0.75	Steel
1001 21 378	6	45.1	20.7	Y	M7x0.75	1.4305
1001 21 209	6	45.1	32.7	Y	M7x0.75	Steel
1001 21 379	6	45.1	32.7	Y	M7x0.75	1.4305
1001 21 202	6	59	38	Y	M7x0.75	Steel
1001 21 376	6	59	38	Y	M7x0.75	1.4305
1001 21 203	6	59	50	Y	M7x0.75	Steel
1001 21 377	6	59	50	Y	M7x0.75	1.4305
1001 21 179	8	55	30	Y	M7x0.75	Steel
1001 21 181	8	55	50	Y	M7x0.75	Steel
1001 21 228	6	45.1	32.7	Y1	M7x0.75	Steel
1001 21 257	6	59	38	Y1	M7x0.75	Steel
1001 21 283	6	59	50	Y1	M7x0.75	Steel
1001 21 385	6	45.1	32.7	Y2	M7x0.75	Steel
1001 21 386	6	59	38	Y2	M7x0.75	Steel
1001 21 387	6	59	50	Y2	M7x0.75	Steel

Version for cutting ring-/olive

Y



Version for plug-type connection HP detachable without tools

Y1



Version for BEKA-plug-type connection detachable with tools

Y2

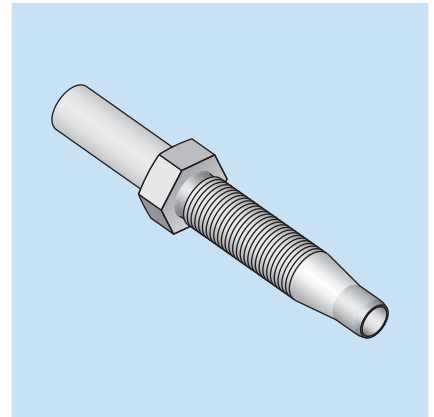
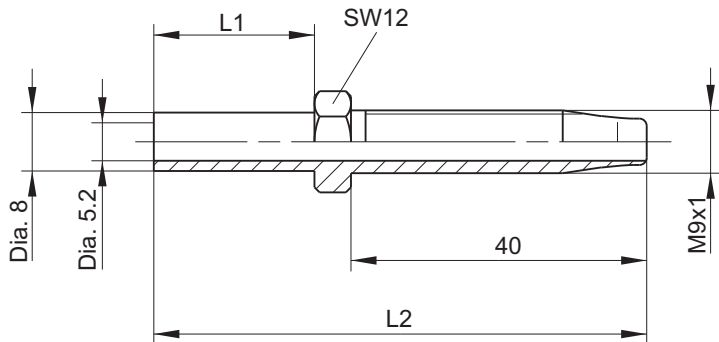


All parts made of steel are galvanized, yellow chromated.



Insert for Ferrule, straight

for fittings with union screws and cutting rings, for the assembly of high pressure hose Ø11,2x6,5

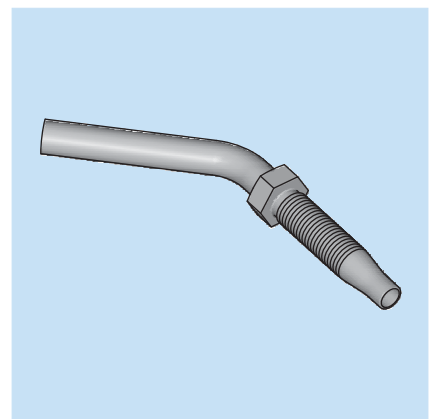
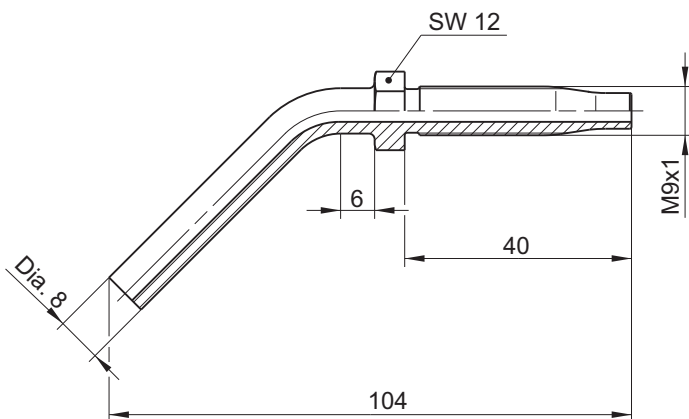


Part-No.	L1	L2	Material
1001 21 301	22	67.3	Steel
1001 21 348	22	67.3	1.4305
1001 21 161	42	87.3	Steel

All Parts made of steel are zinc coated and yellow chromated.

Pipe socket bend by 45°

for fittings with union screws and cutting rings, for the assembly of high pressure hose Ø11,2x6,5



Part-No.	Material
1001 21 163	Steel
1001 21 164	1.4305

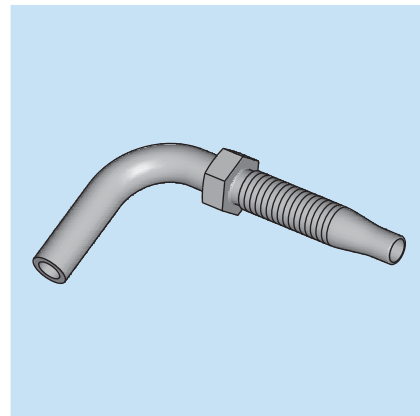
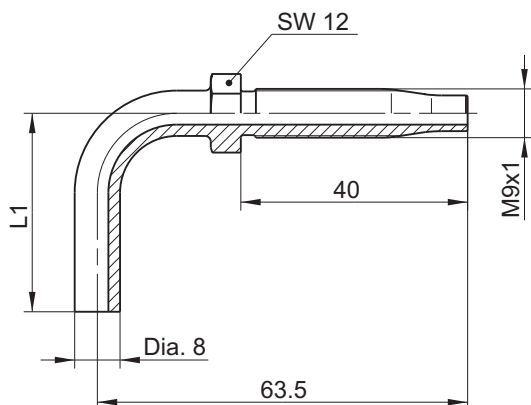
All Parts made of steel are zinc coated and yellow chromated.

Subject to alterations! © BEKA 2013 All rights reserved!



Insert for Ferrule, 90° bent

for Couplings with Cap Screw and Cutting Olive to Mounting a High Pressure Hose Dia. 11.2 x 6.5



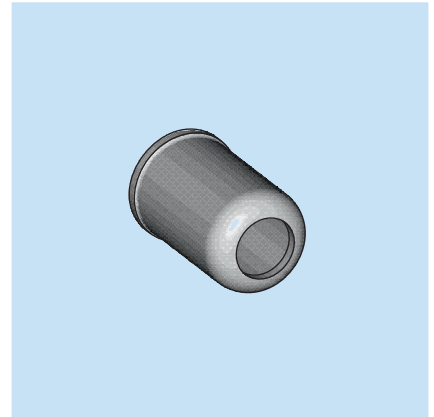
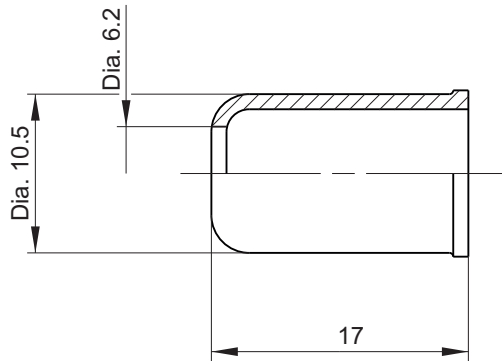
Part-No.	L1	Material
1001 21 165	35	Steel
1001 21 166	35	1.4305
1001 21 167	55	Steel
1001 21 168	55	1.4305
1001 21 169	75	Steel
1001 21 170	75	1.4305

All Parts made of steel are zinc coated and yellow chromated.



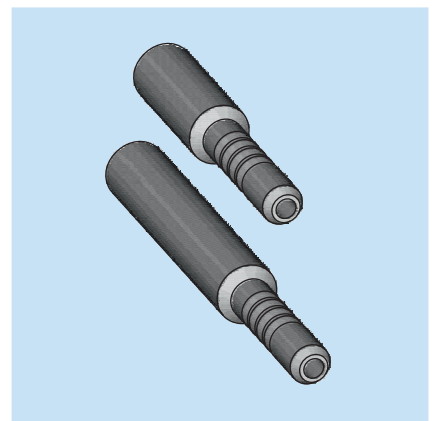
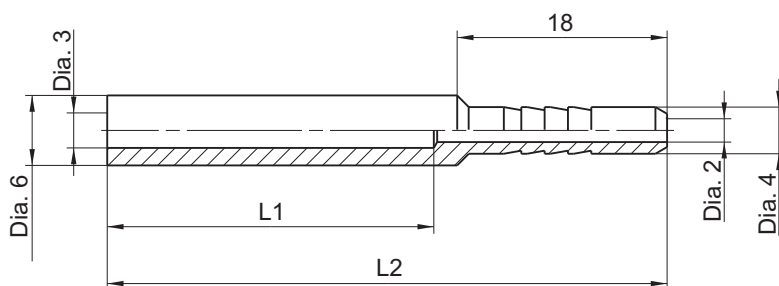


Ferrule DN4



Part-No.	Material
100121204	Steel zinc coated, yellow chromated

Insert for Ferrule DN 4



Part-No.	L1	L2	Material
FWZ02392-00	28	48	Steel
FWZ02392-01	13	33	Steel

All Parts made of steel are zinc coated and yellow chromated.

