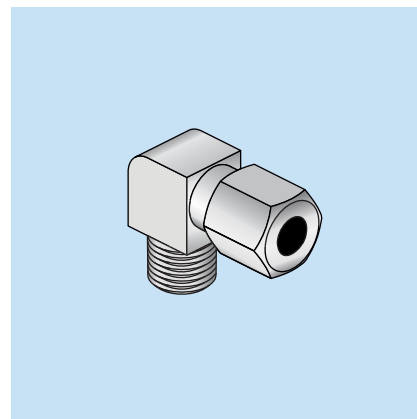
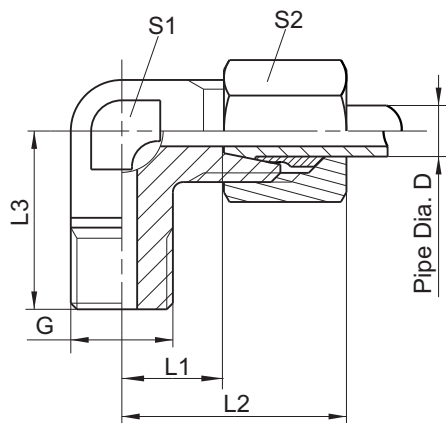


8.9 Fittings

Table of Contents	Page
Fittings with bolted connection	
Elbow screw fitting	8.9.2
Male stud coupling with conical thread	8.9.3
Male stud coupling with straight thread	8.9.4
Straight fitting (pipe connection)	8.9.5
Elbow swivelling screw fitting	8.9.6
Straight rotary connection	8.9.7
Hinges	8.9.7
Bulkhead fitting	8.9.8
Adjustable L fitting	8.9.9
Reduction	8.9.9
T fittings	8.9.10
Adjustable T fitting	8.9.10
Union Nuts	8.9.11
Cutting ring	8.9.12
Union Screw	8.9.13
Olives	8.9.13
Fittings with plug-type connections	
Straight plug-type connection type BEKA	8.9.14
Elbow plug connection type BEKA	8.9.15
Hinge with plug-type connection type BEKA	8.9.16
Elbow swivelling screw fitting with plug-type connection type BEKA	8.9.17
Straight plug-type connection detachable type HP	8.9.18
Elbow plug connection detachable type HP	8.9.19
Joint swivelling plug-type connection detachable type HP	8.9.20
Straight plug-type connection (pipe connection) type Camozzi	8.9.21
Fittings without pipe connections	
Extensions and reductions	8.9.22 - 8.9.24
Elbow Connector	8.9.25 - 8.9.26
Straight connection piece	8.9.27
Straight Bulkhead fitting with inside threading	8.9.27



Elbow screw fitting



Part-No.	G	Construction Sort	Pipe Dia. D	L1	approx. L2	L3	S1	S2	Material
0401 2210 406	M6k	LL	4	11	21	17	9	10	Steel
0401 2210 506	M8x1k	LL	4	11	21	17	9	10	Steel
0401 2210 513	M8x1k	LL	4	11	21	17	9	10	1.4751
0401 2210 306	M10x1k	LL	4	11	21	17	11	10	Steel
0401 2210 606	R1/8" k	LL	4	11	21	18	11	10	Steel
0401 2210 613	R1/8" k	LL	4	11	21	18	11	10	1.4751
0401 2200 406	M6k	LL	6	9.5	21	17	11	12	Steel
0401 2200 413	M6k	LL	6	9.5	21	17	11	12	1.4305
0401 2200 506	M8x1k	LL	6	9.5	21	17	11	12	Steel
0401 2200 513	M8x1k	LL	6	9.5	21	17	11	12	1.4305
0401 2200 306	M10x1k	LL	6	9.5	21	17	11	12	Steel
0401 2200 313LL	M10x1k	LL	6	9.5	21	17	11	12	1.4305
0401 2201 006	M10x1k	L	6	12	27	20	12	14	Steel
0401 2200 606	R1/8" k	LL	6	10	22	17	11	12	Steel
0401 2200 613LL	R1/8" k	LL	6	10	22	17	11	12	1.4305
0401 2200 806	R1/4" k	S	6	16	31	27	14	17	Steel
0401 2200 813	R1/4" k	S	6	16	31	27	14	17	1.4305
0401 2220 606	R1/8" k	LL	8	11.5	23	20	12	14	Steel
0401 2220 306	M10x1k	LL	8	11.5	23	20	12	14	Steel
0401 2220 313	M10x1k	LL	8	11.5	23	20	12	14	1.4305
0401 2220 613	R1/8" k	LL	8	11.5	23	20	12	14	1.4305
0401 2220 806	R1/4" k	L	8	14	29	27	14	17	Steel
0401 2220 813	R1/4" k	L	8	14	29	27	14	17	1.4305

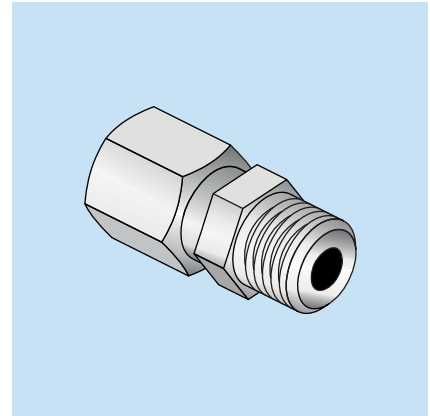
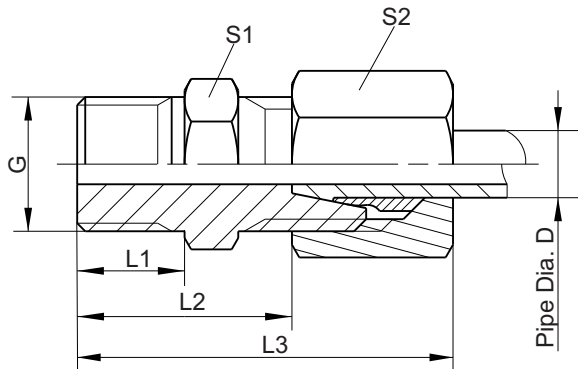
All Parts made of steel are zinc coated and yellow chromated.





Male stud coupling

with conical thread



Part-No.	G	Construction Sort	Pipe Dia. D	L1	L2	approx. L3	S1	S2	Material
0401 2010 406	M6k	LL	4	8	16	26	10	10	Steel
0401 2010 506	M8x1k	LL	4	8	16	26	10	10	Steel
0401 2010 513	M8x1k	LL	4	8	16	26	10	10	1.4571
0401 2010 306	M10x1k	LL	4	8	14.5	26	11	12	Steel
0401 2010 606	R1/8" k	LL	4	8	16	26	11	10	Steel
0401 2000 406	M6k	LL	6	8	14.5	26	11	12	Steel
0401 2000 413	M6k	LL	6	8	14.5	26	11	12	1.4571
0401 2003 906	M7x1k	LL	6	8	14.5	26	12	12	Steel
0401 2000 506	M8x1k	LL	6	8	14.5	26	11	12	Steel
0401 2000 513	M8x1k	LL	6	8	14.5	26	11	12	1.4571
0401 2000 306	M10x1k	LL	6	8	14.5	26	11	12	Steel
0401 2000 313	M10x1k	LL	6	8	14.5	26	11	12	1.4305
0401 2000 606	R1/8" k	LL	6	8	14.5	26	11	12	Steel
0401 2000 613	R1/8" k	LL	6	8	14.5	26	11	12	1.4305
0401 2000 806	R1/4" k	S	6	11.5	23.5	40	17	17	Steel
0401 2020 306	M10x1k	LL	8	8	16.5	28	12	14	Steel
0401 2020 313	M10x1k	LL	8	8	16.5	28	12	14	1.4305
0401 2020 806	R1/4" k	L	8	12	20	35	17	17	Steel

All Parts made of steel are zinc coated and yellow chromated.

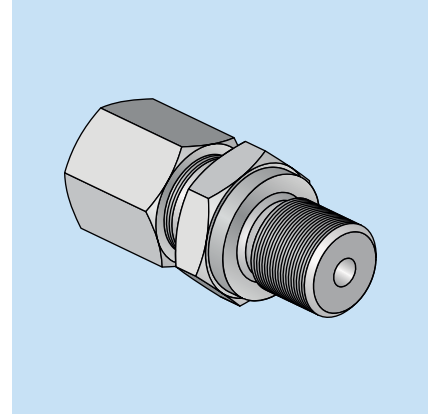
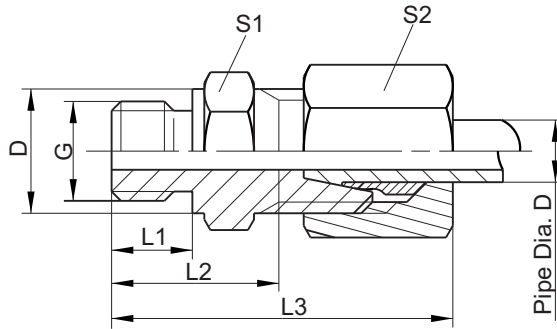
© BEKA 2013 All rights reserved!

Subject to alterations!





Male stud coupling with straight thread



Part-No.	G	Construction Sort	Pipe Dia. D	L1	L2	approx. L3	S1	S2	D	Material
0401 2010 913	G1/8"	LL	4	8	16	28	14	12	14	1.4571
0401 2000 206	M10x1	L	6	8	16.5	31	14	14	14	Steel
0401 2000 213	M10x1	L	6	8	16.5	31	14	14	14	1.4571
0401 2000 906	G1/8"	LL	6	8	16	28	14	12	14	Steel
0401 2000 913LL	G1/8"	LL	6	8	16	28	14	12	14	1.4571
0401 2001 006L	G1/4"	L	6	12	22	37	19	14	18	Steel
0401 2001 006	G1/4"	S	6	12	25	40	19	17	18	Steel
0401 2001 013	G1/4"	S	6	12	25	40	19	17	18	1.4571
0401 2001 406	G3/8"	L	6	12	23.5	38	22	14	22	Steel
0401 2020 213	M10x1	L	8	12	22	37	17	17	17	1.4571
0401 2020 906	G1/8"	LL	8	8	18	29	14	14	14	Steel
0401 2020 913	G1/8"	LL	8	8	18	29	14	14	14	1.4571
0401 2021 006	G1/4"	L	8	12	22	37	19	17	18	Steel
0401 2021 013	G1/4"	L	8	12	22	37	19	17	18	1.4571
0401 2021 006S	G1/4"	S	8	12	27	42	19	19	18	Steel
0401 2021 406	G3/8"	L	8	12	23.5	38	22	17	22	Steel
0401 2021 413	G3/8"	L	8	12	23.5	38	22	17	22	1.4571

All Parts made of steel are zinc coated and yellow chromated.

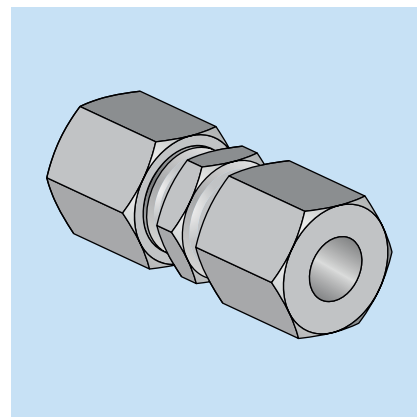
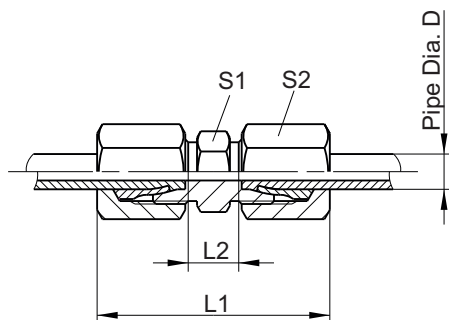
© BEKA 2013 All rights reserved!

Subject to alterations!



Straight fitting

(pipe connection)

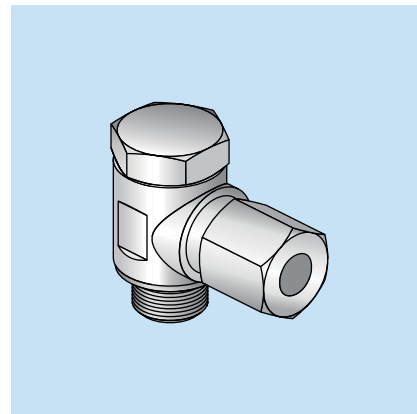
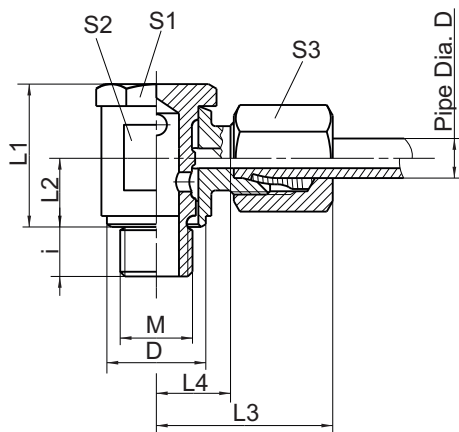


Part-No.	Pipe Dia. D	Construction Sort	approx.				Material
			L1	L2	S1	S2	
0401 3600 106	4	LL	31	12	9	10	Steel
0401 3600 306	6	LL	32	9	11	12	Steel
0401 3600 313	6	LL	39	9	11	12	1.4571
0401 3601 006	6	L	39	10	12	14	Steel
0401 3602 006	6	S	45	16	14	17	Steel
0401 3600 406	8	LL	35	12	12	14	Steel
0401 3601 106	8	L	40	11	14	17	Steel
0401 3602 106	8	S	47	18	17	19	Steel

All Parts made of steel are zinc coated and yellow chromated.



Elbow swivelling screw fitting

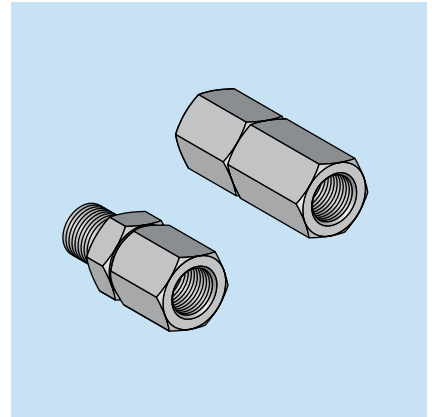
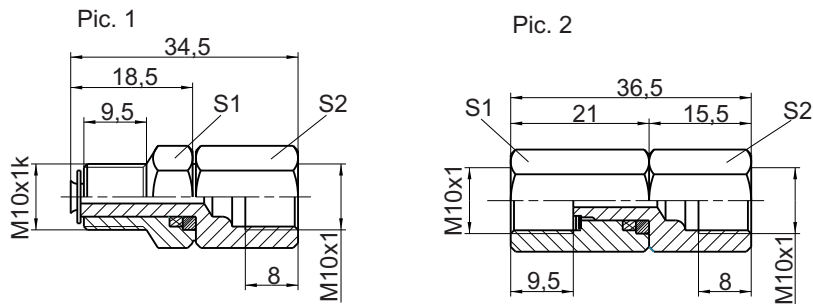


Part-No.	M	Pipe Dia. D	Construction sort	approx.							S1	S2	S3	D	Material
				L1	L2	L3	L4	i							
0401 3210 206	M10x1	4	LL	20	9.5	22	10	6	14	14	12	13	Steel		
0401 3210 706	M8x1	4	LL	18	8	21	11.5	6	14	14	10	13	Steel		
0401 3200 706LL	M8x1	6	LL	20	9.5	22	10	6	14	14	12	13	Steel		
0401 3200 206LL	M10x1	6	LL	20	9.5	22	10	6	14	14	12	13	Steel		
0401 3200 206	M10x1	6	L	22	10	26	11.5	6	14	17	14	14.5	Steel		
0401 3200 906	G1/8"	6	L	22	10	26	11.5	6	14	17	14	14.5	Steel		
0401 3201 006	G1/4"	6	S	26	12.5	29	14.5	9	19	19	17	18	Steel		
0401 3220 206LL	M10x1	8	LL	21.5	10	23	11	6	14	14	14	13	Steel		
0401 3220 906	G1/8"	8	LL	21.5	10	23	11	6	14	14	14	13	Steel		
0401 3221 006	G1/4"	8	L	26	12.5	28	13	9	19	19	17	18	Steel		

All Parts made of steel are zinc coated and yellow chromated.

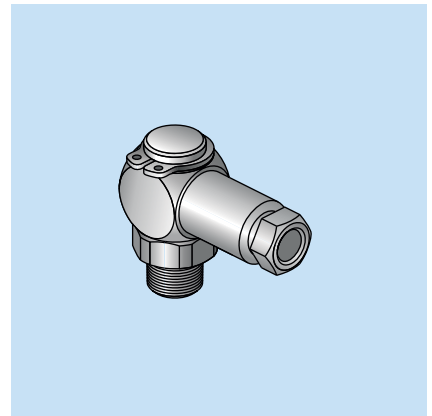
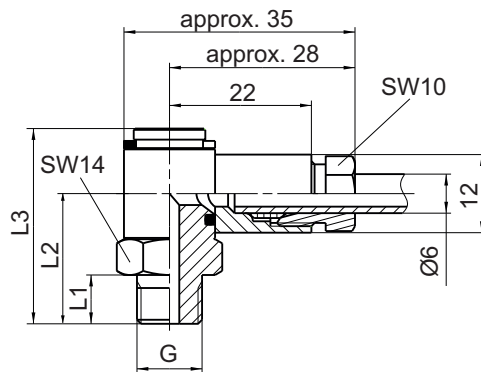


Straight rotary coupling



Part-No.	Pic.	S1	S2	Material
0402 020	1	14	14	Brass
0402 042	2	14	14	Brass

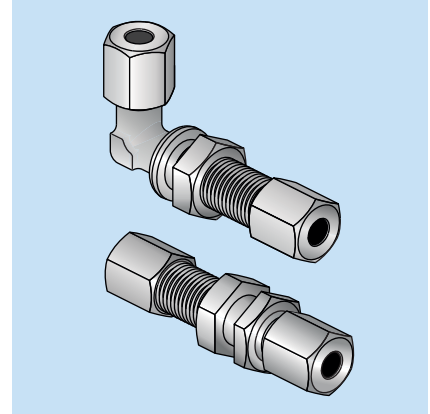
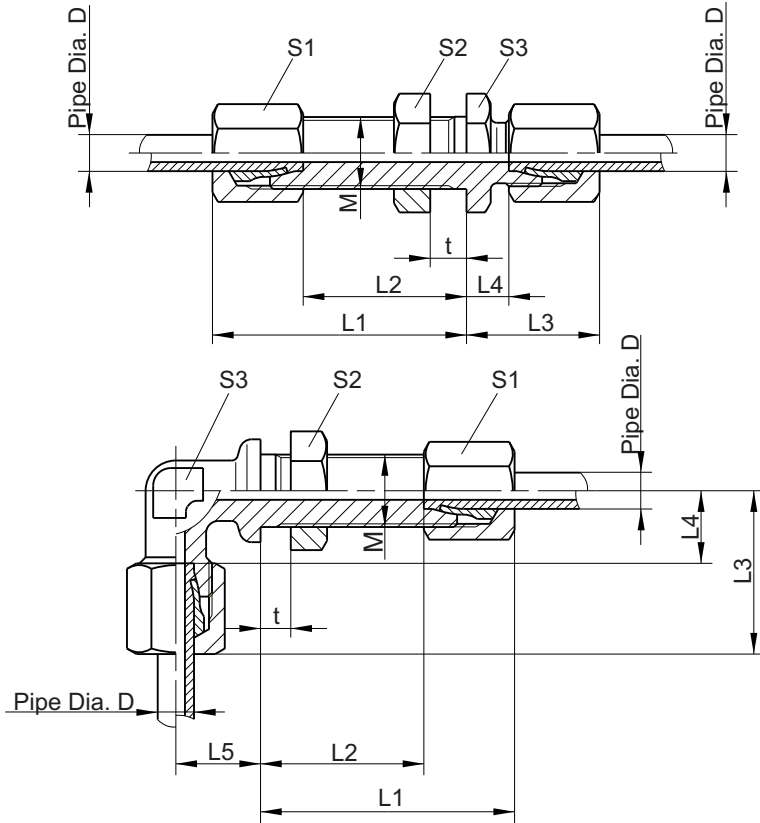
Hinges



Part-No.	G	L1	L2	L3	Material
0402 011	M6k	7,5	20	30	Brass
0402 012	M8x1k	7,5	20	30	Brass
0402 013	M10x1k	7,5	20	30	Brass
0402 023	R1/8" k	7,5	20	30	Brass
0402 043	R1/4" k	9	21,5	31,5	Brass
0402 041	1/8-27 NPT	7,5	20	30	Brass



Bulkhead fitting



Straight bulkhead fitting

Part-No.	Pipe Dia. D	Construction			approx.		approx.		S1	S2	S3	Material
		sort	M	t max.	L1	L2	L3	L4				
0401 4701 006	6	L	M12x1.5	16	42	27	22	7	14	17	17	Steel
0401 4701 013	6	L	M12x1.5	16	42	27	22	7	14	17	17	1.4571
0401 4701 106	8	L	M14x1.5	16	42	27	23	8	17	19	19	Steel
0401 4701 113	8	L	M14x1.5	16	42	27	23	8	17	19	19	1.4571

Angular bulkhead fitting

Part-No.	Pipe Dia. D	Construction			approx.		L3 max.	L4	L5	S1	S2	S3	Material
		sort	M	t max.	L1	L2							
0401 4721 006	6	L	M12x1.5	16	42	27	27	12	14	14	17	12	Steel
0401 4721 013	6	L	M12x1.5	16	42	27	27	12	14	14	17	12	1.4571
0401 4722 006	6	S	M14x1.5	16	44	29	31	16	17	17	19	12	Steel
0401 4721 106	8	L	M14x1.5	16	42	27	29	14	17	17	19	12	Steel

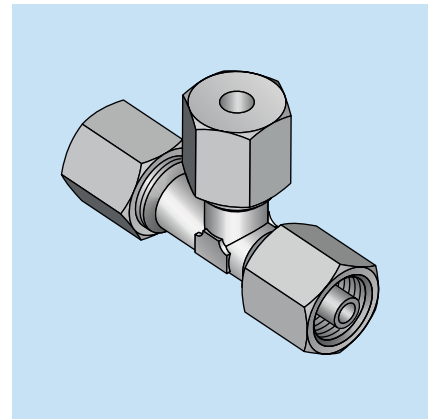
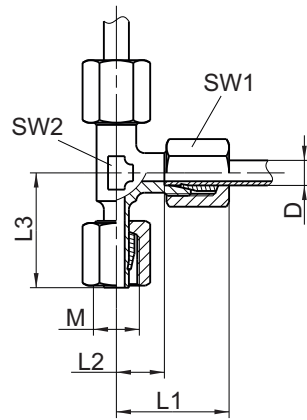
All Parts made of steel are zinc coated and yellow chromated.

Subject to alterations! © BEKA 2013 All rights reserved!





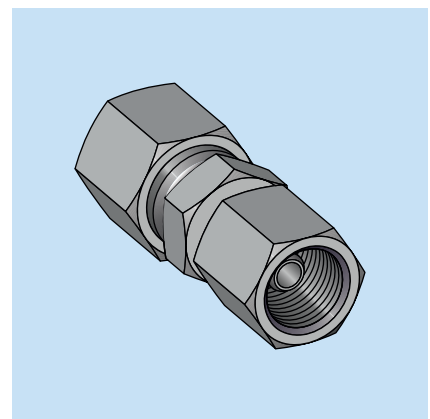
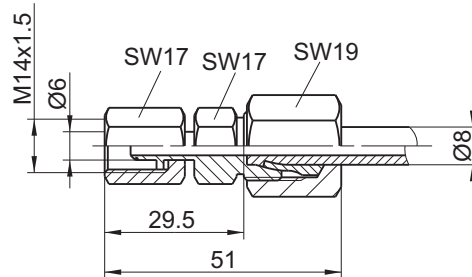
Adjustable L fitting



Part-No.	Construction Sort	D	M	approx.			SW1	SW2	Material
				L1	L2	L3			
04015821006	L	6	M12x1.5	27	12	26	14	12	Steel
04015822006	S	6	M14x1.5	31	16	27	17	12	Steel
04015821106	L	8	M14x1.5	29	14	27.5	17	12	Steel
04015822106	S	8	M16x1.5	32	17	27.5	19	14	Steel

All Parts made of steel are zinc coated and yellow chromated.

Reduction

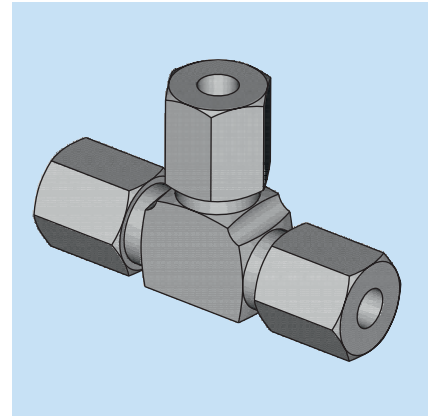
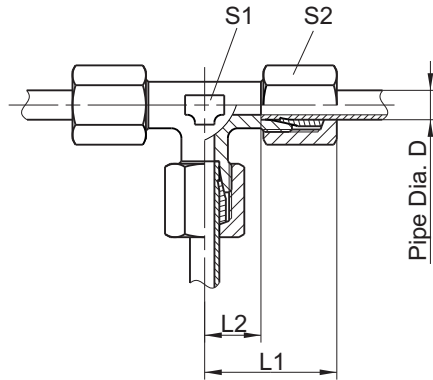


Part-No.	Construction sort	Material
04060957	S	Steel, zinc coated, yellow chromate

© BEKA 2013 All rights reserved!
Subject to alterations!



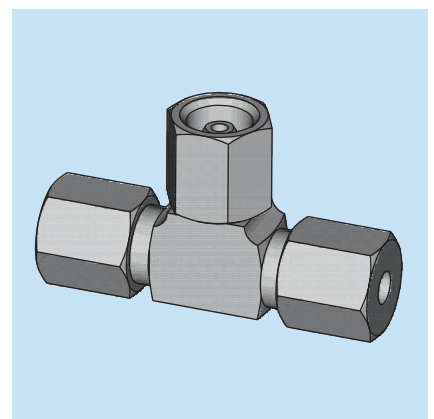
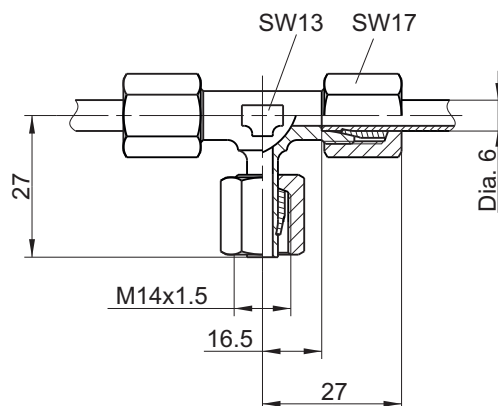
T fittings



Part-No.	Pipe Dia. D	Construction sort	approx.				Material
			L1	L2	S1	S2	
0401 3640 306	6	LL	21	9.5	11	12	Steel
0401 3641 006	6	L	27	12	12	14	Steel
0401 3642 006	6	S	31	16	14	17	Steel
0401 3640 406	8	LL	23	11.5	12	14	Steel
0401 3641 106	8	L	29	14	14	17	Steel

All Parts made of steel are zinc coated and yellow chromated.

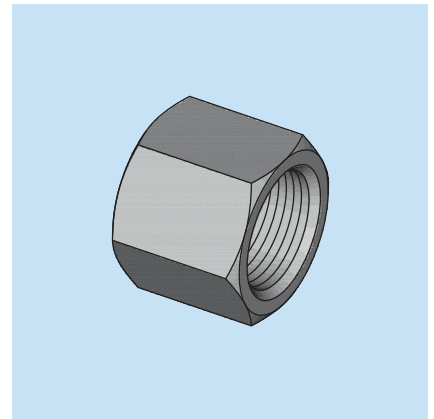
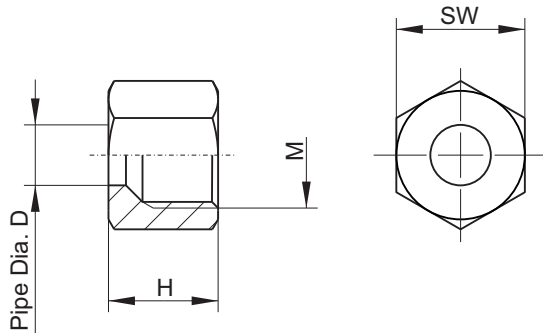
Adjustable T fitting



Part-No.	Construction Sort	Material
04015722006	S	Steel, zinc coated, yellow chromate



Union Nuts

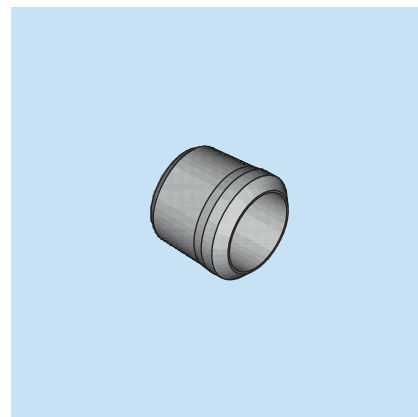
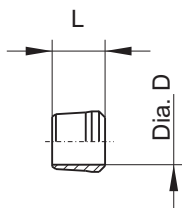


Part-No.	Construction sort	Pipe Dia. D	M	H	SW	Material
0403 15001 06	LL	4	M8x1	11	10	Steel
0403 15003 06	LL	6	M10x1	11.5	12	Steel
0403 15010 06	L	6	M12x1.5	14.5	14	Steel
0403 15010 13	L	6	M12x1.5	14.5	14	1.4571
0403 15020 06	S	6	M14x1.5	16.5	17	Steel
0403 15004 06	LL	8	M12x1	12	14	Steel
0403 15011 06	L	8	M14x1.5	14.5	17	Steel
0403 15011 13	L	8	M14x1.5	14.5	17	1.4571
0403 15021 06	S	8	M16x1.5	16.5	19	Steel

All Parts made of Steel are Zinc coated and yellow chromated.



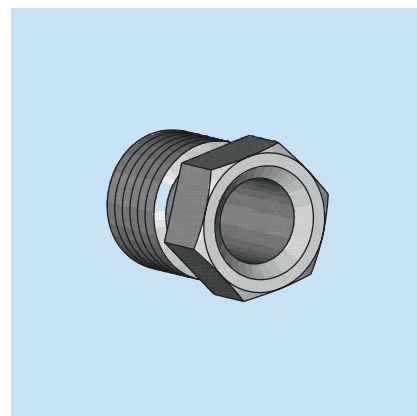
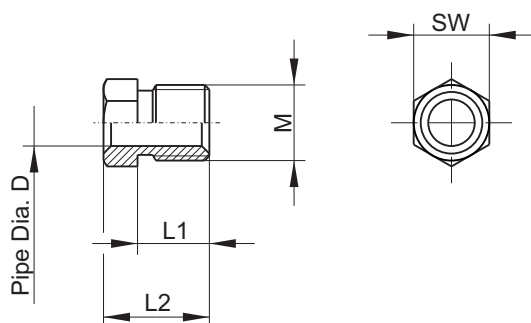
Cutting ring



Part-No.	for Pipe Dia. D	Construction Sort	L	Material
0403 15201 05	4	LL	6	Steel Zinc coated
0403 15203 05	6	LL	7	Steel Zinc coated
09 03861 06 03211	6	L / S	9.5	Steel Zinc coated
0403 15210 13	6	L / S	9.5	1.4571
0403 15204 05	8	LL	7	Steel Zinc coated
09 03861 08 03211	8	L / S	9.5	Steel Zinc coated
0403 15211 13	8	L / S	9.5	1.4571



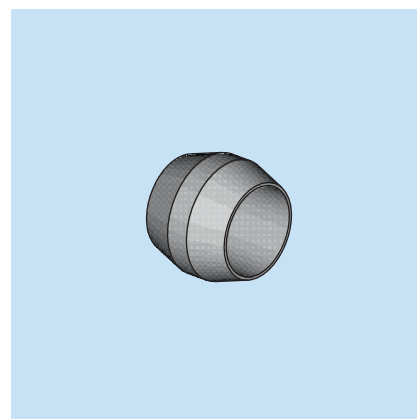
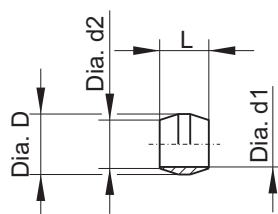
Union Screw



Part-No.	Pipe Dia. D	M	L1	L2	SW	Material
0802 000 311	4	M10x1	8.5	12	10	Steel
0802 000 312	4	M10x1	8.5	12	10	High-grade Steel
0802 000 190	6	M10x1	9.5	14	10	Steel
F0060/19-08	6	M10x1	9.5	14	10	High-grade Steel

All Parts made of Steel are Zinc coated and yellow chromated.

Olives



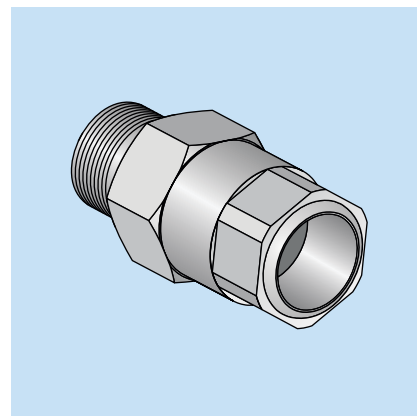
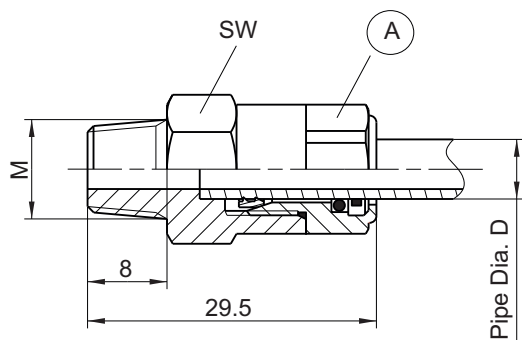
Part-No.	for Pipe Dia.	Dia. D	L	Dia. d1	Dia. d2	Material
09 03862 0011	4	6	5.5	4	4,3	Steel
09 03862 0013	4	6	5.5	4	4.3	Brass
09 03862 0015	4	6	5.5	4	4.3	High-grade Steel
09 03862 0021	6	8	6.5	6	6.4	Steel
09 03862 0023	6	8	6.5	6	6.4	Brass
09 03862 0026	6	8	6.5	6	6.4	High-grade Steel
09 03862 0031	8	10	6.5	8	8.5	Steel
09 03862 0033	8	10	6.5	8	8.5	Brass

Subject to alterations! © BEKA 2013 All rights reserved!



Straight plug-type connection

Type BEKA



Ⓐ

Plug-in connection
 for Pipe Dia. 4
 SW 12
 Order-No.: 0406 0851

Ⓐ

Plug-in connection
 for Pipe Dia. 6
 SW 12
 Order-No.: 0406 0850

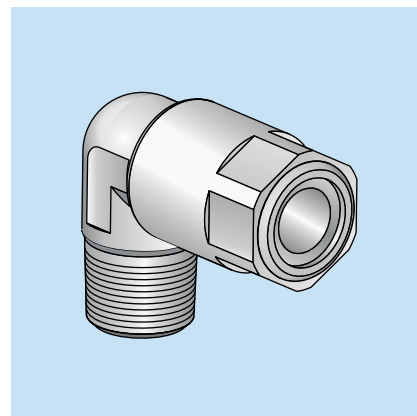
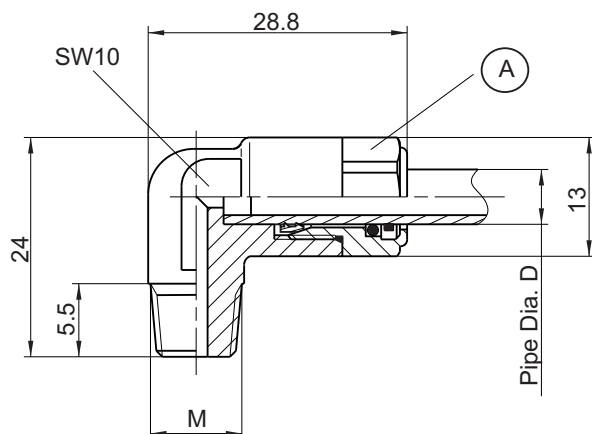
Part-No.	M	Pipe Dia. D	SW	Material
0406 0874	M6k	4	11	Steel
0406 0873	M8x1k	4	11	Steel
0406 0872	M10x1k	4	11	Steel
0406 0875	R1/8"k	4	11	Steel
0406 0878	M6k	6	13	Steel
0406 0877	M8x1k	6	13	Steel
0406 0876	M10x1k	6	13	Steel
0406 0879	R1/8"k	6	13	Steel

All Parts made of steel are zinc coated and yellow chromated.



Elbow plug connection

Type BEKA



(A)

Plug-in connection
 for Pipe Dia. 4
 SW 12
 Order-No.: 0406 0851

(A)

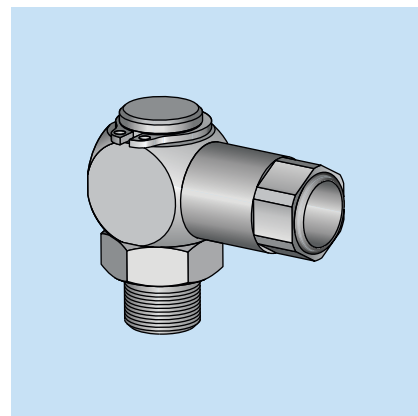
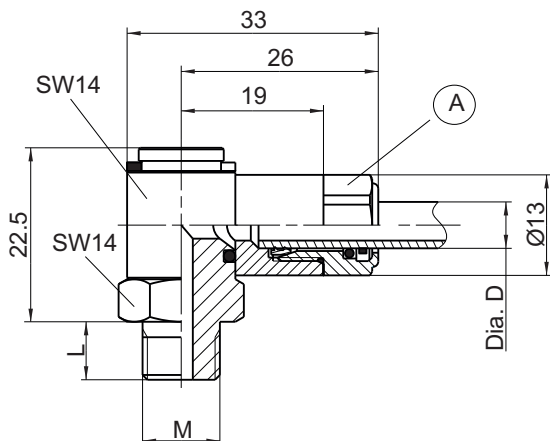
Plug-in connection
 for Pipe Dia. 6
 SW 12
 Order-No.: 0406 0850

Part-No.	M	Pipe Dia. D	Material
0406 0866	M6k	4	Brass
0406 0865	M8x1k	4	Brass
0406 0864	M10x1k	4	Brass
0406 0867	R1/8" k	4	Brass
0406 0870	M6k	6	Brass
0406 0869	M8x1k	6	Brass
0406 0868	M10x1k	6	Brass
0406 0871	R1/8" k	6	Brass



Hinge

with plug-type connection
Type BEKA



(A)

Plug-in connection
for Pipe Dia. 4
SW 12
Order-No.: 0406 0851

(A)

Plug-in connection
for Pipe Dia. 6
SW 12
Order-No.: 0406 0850

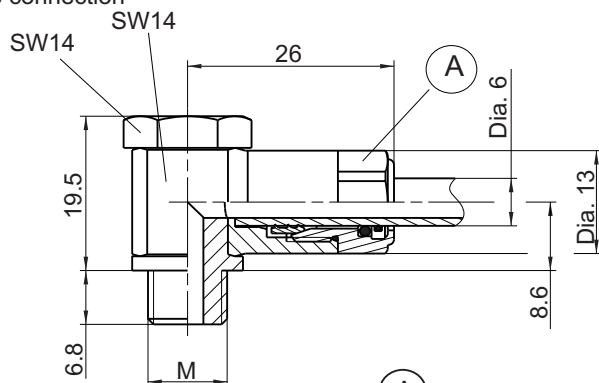
Part-No.	M	L	Dia. D	Material
0402 050	M6k	7.5	4	Brass
0402 051	M8x1k	7.5	4	Brass
0402 052	M10x1k	7.5	4	Brass
0402 054	R1/8"k	7.5	4	Brass
0402 053	R1/4"k	9	4	Brass
0402 036	M6k	7.5	6	Brass
0402 037	M8x1k	7.5	6	Brass
0402 038	M10x1k	7.5	6	Brass
0402 040	R1/8"k	7.5	6	Brass
0402 039	R1/4"k	9	6	Brass
0402 045	1/8-27 NPT	7.5	6	Brass



Elbow swivelling screw fitting

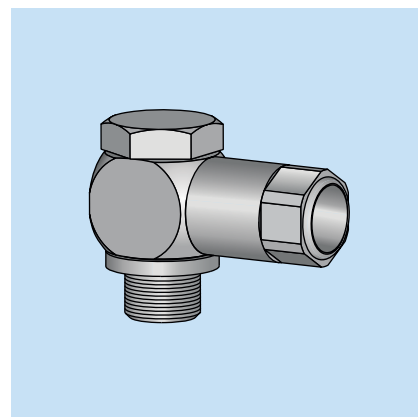
with plug-type connection

Type BEKA



A

Plug-in Connection
 for Pipe Dia. 6
 SW 12
 Order-No.: 0406 0850



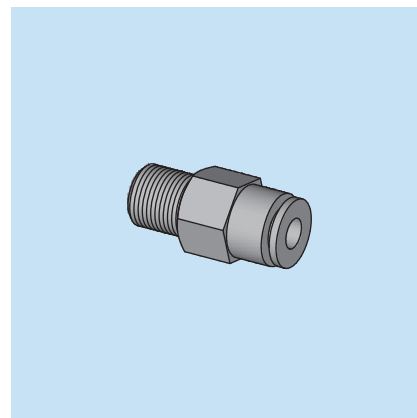
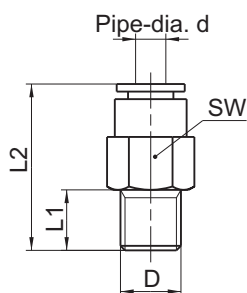
Part-No.	M	Material
0401950029-00	G1/8"	Steel, zinc coated,
0401950029-01	M10x1	yellow chromate



Straight plug-type connection detachable

Type HP

soluble without tool



Part-No.	Pipe-dia. d	D	L1	L2	SW
04062321	4	M8x1k	8	22	10
04062323	4	M10x1k	8	21	11
04062325	4	M6k	8	25	10
04062347	4	R1/8" k	7.5	21	10
04062322	6	M8x1k	8	28	12
04062324	6	M10x1k	8	24	12
04062326	6	M6k	8	28	12
04062348	6	R1/8" k	7.5	24	12
04062349	6	R1/4" k	11	26	14

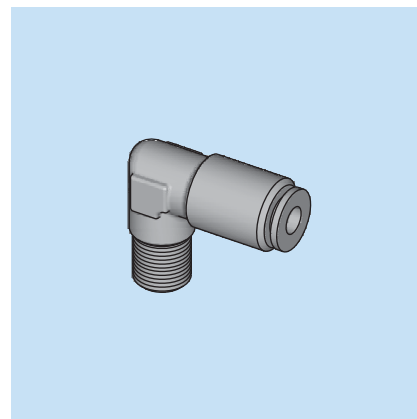
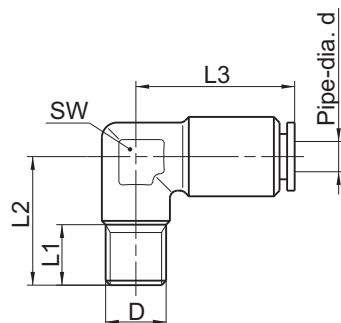
Material: Brass, nickel-plated; Pressure range: max. 150 bar; Temperature range: -20°C to +70°C



Elbow plug connection detachable

Type HP

soluble without tool



Part-No.	Pipe-dia. d	D	L1	L2	L3	SW
04062327	4	R1/8"k	7.5	17	21	10
04062329	4	M6k	6	17	21	10
04062331	4	M8x1k	8	17	21	10
04062333	4	M10x1k	8	17	21	10
04062328	6	R1/8"k	7.5	20	22	14
04062330	6	M6k	6	20	22	14
04062332	6	M8x1k	8	20	22	14
04062362	6	M8x1.25k	8	20	22	14
04062334	6	M10x1k	8	20	22	14

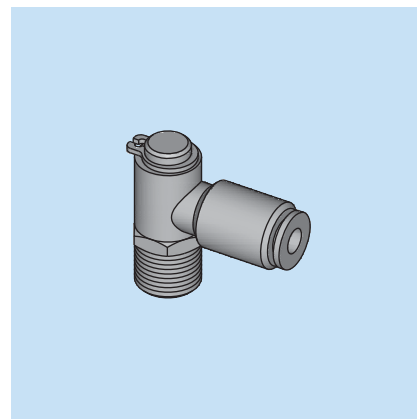
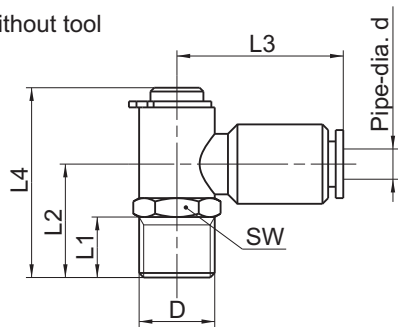
Material: Brass, nickel-plated; Pressure range: max. 150 bar;
Temperature range: -20°C to +70°C



Joint swivelling plug-type connection detachable

Type HP

soluble without tool



Part-No.	Pipe-dia. d	D	L1	L2	L3	L4	SW
04062335	4	R1/8"k	7.5	14.5	22	24.5	11
04062338	4	M6k	8	15	22	24	11
04062340	4	M8x1k	8	15	22	24	11
04062342	4	M10x1k	8	15	22	25	11
04062336	6	R1/8"k	7.5	14.5	24	24.5	11
04062339	6	M6k	8	15	24	24	11
04062341	6	M8x1k	8	15	24	24	11
04062363	6	M8x1.25k	8	15	24	24	11
04062343	6	M10x1k	8	15	24	25	11
04062337	6	R1/4"k	11	20.5	24	28	14

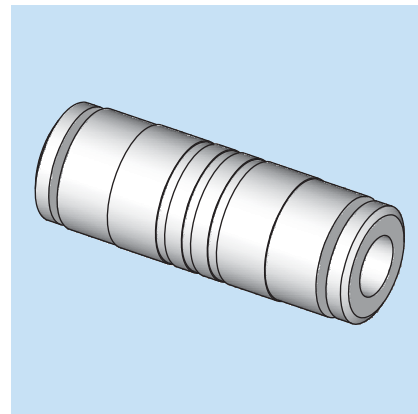
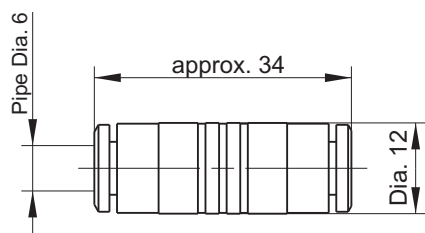
Material: Brass, nickel-plated; Pressure range: max. 150 bar; Temperature range: -20°C to +70°C



Straight plug-type connection

(pipe connection)

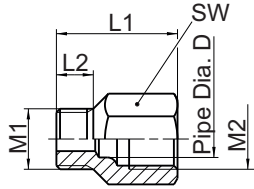
Type CAMOZZI



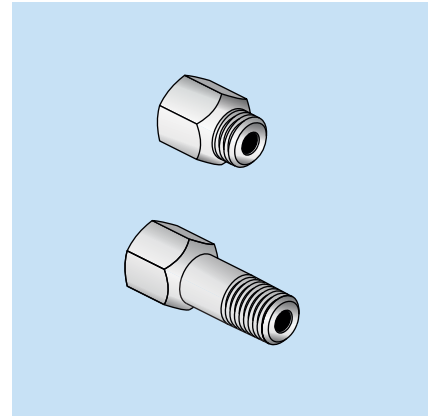
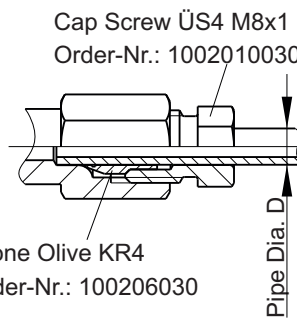
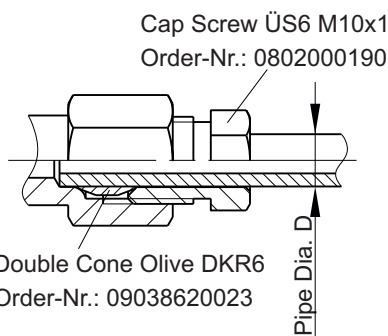
Part-No.	Material
04060759	Steel zinc coated



Extensions and reductions



It is also possible to connect the lubrication pipes with a extension piece direct.

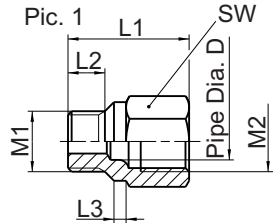


Part-No.	M1	M2	L1	L2	L3	SW	Pipe Dia. D	Material
1002 1000 301k	M6k	M8x1	20	6	--	11	4	Steel
0401 1600 506	M6k	M10x1	24	6	--	13	6	Steel
0401 1600 406	M8k	M10x1	21	6	--	13	6	Steel
1002 1000 304k	M8x1k	M8x1	17	7.4	--	11	4	Steel
0401 1600 106	M8x1k	M10x1	21	6	--	13	6	Steel
0401 1600 906	M10k	M10x1	21	6	--	13	6	Steel
1002 1000 306k	M10x1k	M8x1	16	7.4	--	11	4	Steel
0401 1610 306	M10x1k	M10x1	17.5	6	--	13	6	Steel
0401 1600 206	M10x1k	M10x1	21	6	--	13	6	Steel
0401 1600 213	M10x1k	M10x1	21	6	--	13	6	1.4305
0401 1610 006	M10x1k	M10x1	26	6	--	13	6	Steel
0401 1610 106	M12x1k	M10x1	21	8.5	--	13	6	Steel

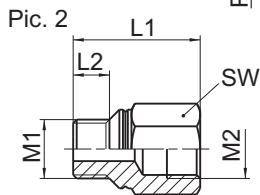
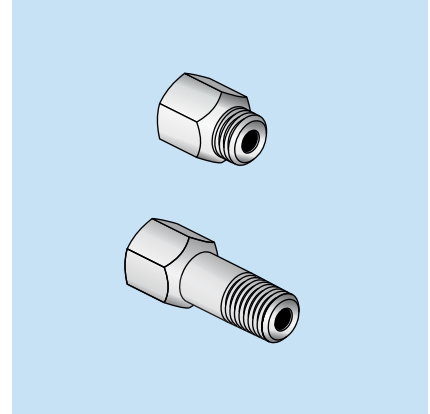
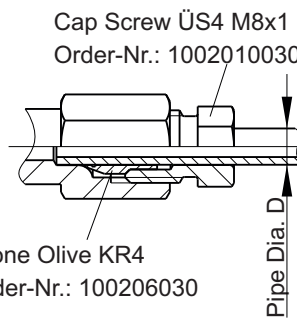
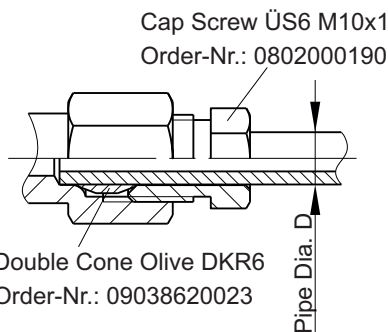
All Parts made of steel are zinc coated and yellow chromated.



Extensions and reductions



It is also possible to connect the lubrication pipes with a extension piece direct.



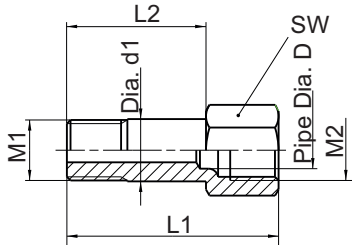
On this part it is not possible to connect a lubrication pipe directly.

Part-No.	M1	M2	L1	L2	L3	SW	Pipe Dia. D	Material	Pic.
0401 1600 306	R1/8"K	M10x1	21	6	2	13	6	Steel	1
0401 1600 313	R1/8"K	M10x1	21	6	2	13	6	1.4305	1
0401 1604 106	R1/8"K	R1/8"	21	6	2	13	--	Steel	2
0401 1601 406	UNF 1/4"-28	M10x1	24	6	2	13	6	Steel	1
0401 1601 306	UNEF 1/4"-32	M10x1	24	6	4	13	6	Steel	1

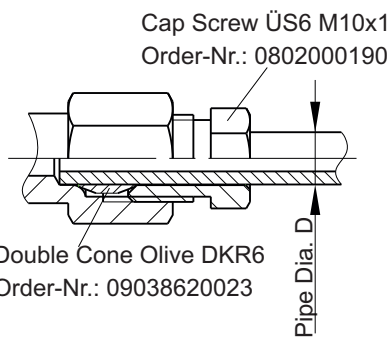
All Parts made of steel are zinc coated and yellow chromated.



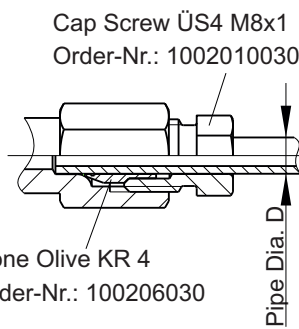
Extensions and reductions



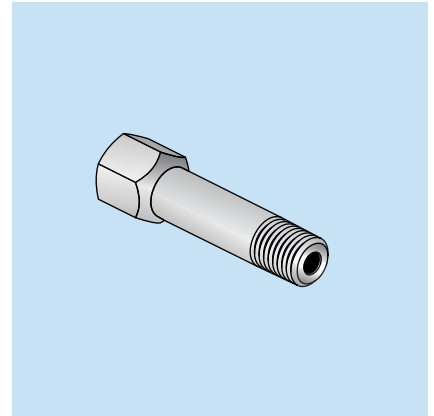
It is also possible to connect the lubrication pipes to extension piece direct.



Double Cone Olive DKR6
Order-Nr.: 09038620023



Cone Olive KR 4
Order-Nr.: 100206030



Part-No.	M1	M2	L1	L2	SW	Pipe Dia. D	Dia. d1	Material
0401 1605 806	M6k	M8x1	35	23	10	4	6.3	Steel
0401 1600 806	M8x1k	M8x1	35	23	10	4	8.3	Steel
0401 1603 106	M8x1k	M8x1	50	37.5	10	4	8.3	Steel
0401 1600 706	M10x1k	M10x1	35	23	13	6	10.3	Steel
0401 1610 813	M10x1k	M10x1	35	23	13	6	10.3	1.4305
0401 1600 606	M10x1k	M10x1	50	38	13	6	10.3	Steel
0401 1601 613	M10x1k	M10x1	50	38	13	6	10.3	1.4305
0401 1610 406	M10x1k kurz	M10x1	100	88	13	6	10.3	Steel
0401 1611 506	R1/8" k	M10x1	50	38	13	6	9.9	Steel
0401 1601 206	R1/4" k	M10x1	26	14	14	6	13.2	Steel
0401 1601 213	R1/4" k	M10x1	26	14	14	6	13.2	1.4305
0401 1601 006	R1/4" k	M10x1	35	23	14	6	13.2	Steel
0401 1601 013	R1/4" k	M10x1	35	23	14	6	13.2	1.4305
0401 1601 106	R1/4" k	M10x1	55	43	14	6	13.2	Steel
0401 1601 113	R1/4" k	M10x1	55	43	14	6	13.2	1.4305

All Parts made of steel are zinc coated and yellow chromated.

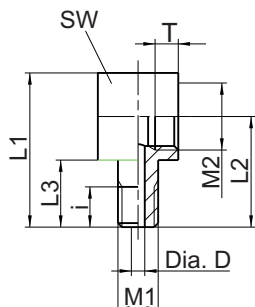
© BEKA 2013 All rights reserved!

Subject to alterations!

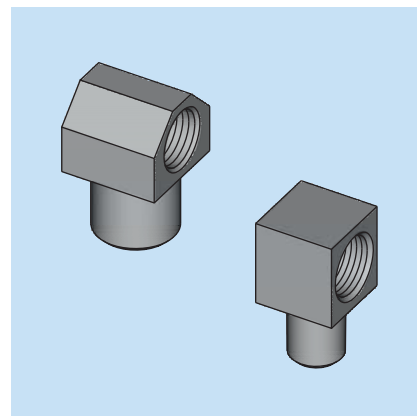
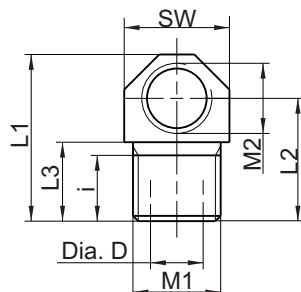


Elbow Connector 90°

Pic. 1:



Pic. 2:

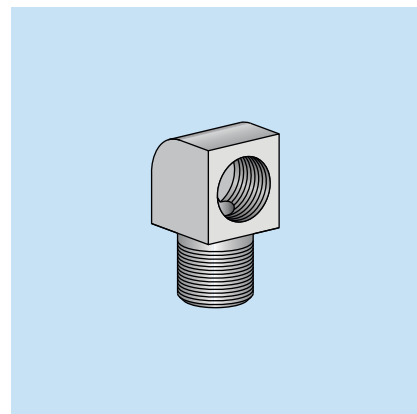
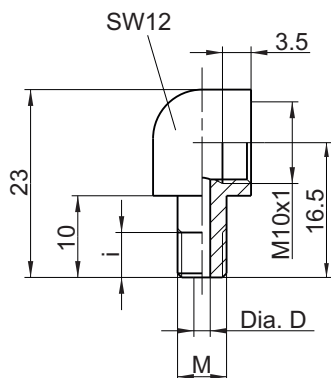


Part-No.	M1	i	M2	T	Dia. D	L1	L2	L3	SW	Material	Pic.
1002 10 010	M6k	6	M10x1	3.5	2	23	16.5	10	12	Steel	1
1002 10 020	M8x1k	7	M10x1	3.5	4	23	16.5	10	12	Steel	1
1002 10 025	M8x1.25k	7	M10x1	3.5	4	23	16.5	10	12	Steel	1
1002 10 120	M10x1k	7.5	M8x1	4.5	6	19	14	9	12	Steel	2
1002 10 030	M10x1k	7	M10x1	3.5	5	23	16.5	10	12	Steel	1
1002 10 041	M10x1k	7	M10x1	3.5	5	25	18.5	10	12	1.4305	1
1002 10 042	M10x1k	7	M10x1	3.5	5	65	58.5	10	12	1.4305	1
1002 10 043	M10x1k	7	M10x1	3.5	5	75	68.5	10	12	1.4305	1
1002 10 105	R1/8" k	10	M10x1	3.5	5	26	19	12	12	Steel	1
1002 10 035	R1/4" k	10	M10x1	3.5	7	26	19	12	14	Steel	1
1002 10 032	1/4"-28UNF	6	M10x1	3.5	2	23	16.5	10	12	Steel	1

All Parts made of steel are zinc coated and yellow chromated.



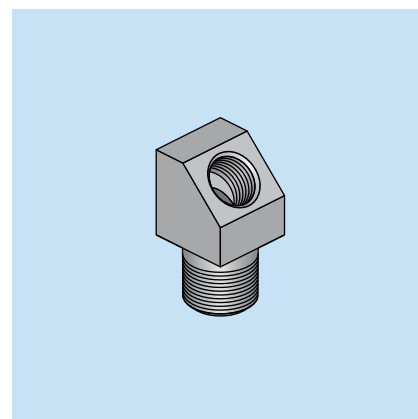
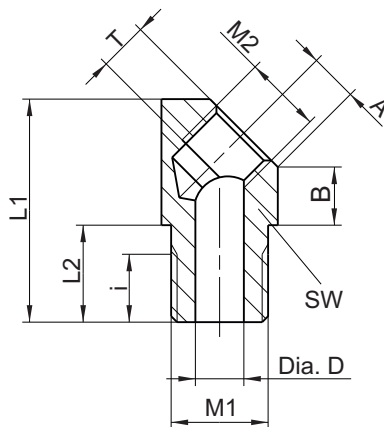
Elbow Connector 90°



Part-No.	M	i	Dia. D	Material
1002 10 073	M6k	6	2	Steel
1002 10 072	M8x1k	7	4	Steel
1002 10 071	M8x1.25k	7	4	Steel
1002 10 070	M10x1k	7	5	Steel

All Parts made of steel are zinc coated and yellow chromated.

Elbow Connector 45°

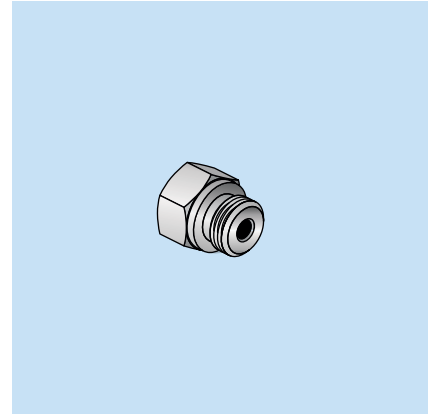
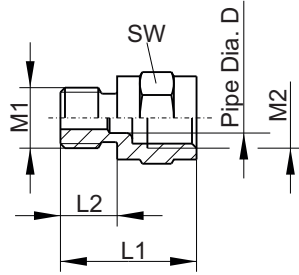


Part-No.	M1	i	Dia. D	M2	T	L1	L2	A	B	SW	Material
1002 10 095	M6k	6	2	M8x1	5	23	10	4.95	6	12	Steel
1002 10 085	M8x1k	7	4	M8x1	5	23	10	4.95	6	12	Steel
1002 10 090	M8x1.25k	7	4	M8x1	5	23	10	4.95	6	12	Steel
1002 10 080	M10x1k	7	5	M8x1	5	23	10	4.95	6	12	Steel
0401950007-00	R1/4" k	14.5	7	R1/4" k	7	32.5	14.5	7.1	8	18	Steel
1002 10 098	1/4"-28UNF	6	2	M8x1	5	23	10	4.95	6	12	Steel

All Parts made of steel are zinc coated and yellow chromated.



Straight connection piece

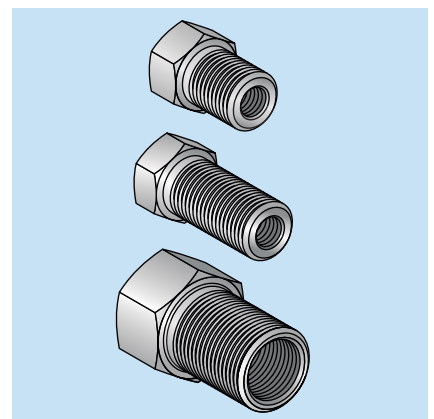
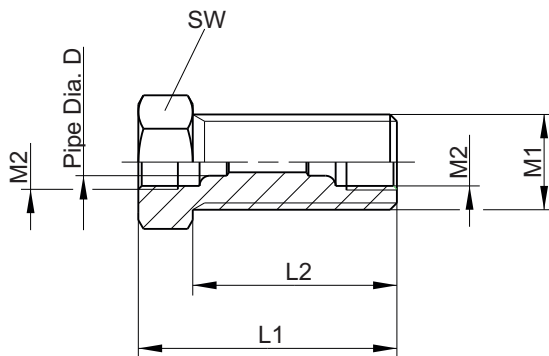


Part-No.	M1	M2	L1	L2	SW	Pipe Dia. D	Material
1002 1000 301	M6	M8x1	20	6.5	11	4	Steel
1002 1000 304	M8x1	M8x1	18	7.5	11	4	Steel
1002 1000 404	M8x1	M10x1	23	7.5	14	6	Steel
1002 1000 306	M10x1	M8x1	18	7.5	14	4	Steel
1002 1000 406	M10x1	M10x1	20.5	7.5	14	6	Steel
1002 1000 410	G1/4"	M10x1	21.5	10	17	6	Steel

All Parts made of steel are zinc coated and yellow chromated.

Straight Bulkhead fitting

with Inside Threading



Part-No.	M1	M2	L1	L2	SW	Pipe Dia. D	Material
1002 5000 311	M14x1.5	M8x1	27	19	17	4	Steel
1002 5000 311L	M14x1.5	M8x1	38	30	17	4	Steel
1002 5000 411	M14x1.5	M10x1	30	20	17	6	Steel
1002 5000 715	M20x1.5	M16x1.5	42	27	24	10	Steel

All Parts made of steel are zinc coated and yellow chromated.

8.9.27

