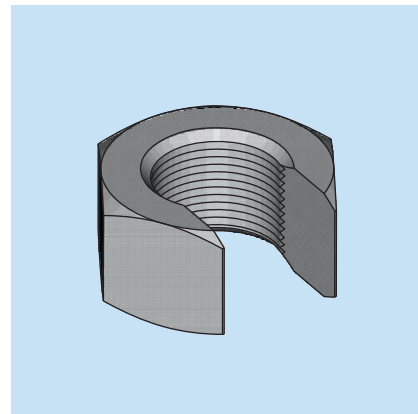
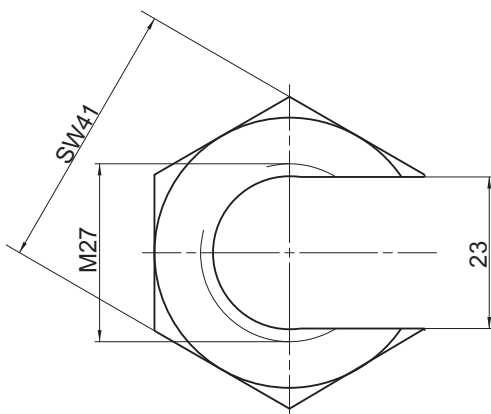


8.11 Accessory parts

Table of Contents	Page
Protection parts for lubrication points	
Weld-on nut	8.11.2
Protection ring	8.11.2
Protector for lubrication points	8.11.3
Weld-on piece for lubrication points	8.11.3
Protection parts for lubrication lines	
Protector for lines	8.11.4
Coiled tubing	8.11.4
Bent protection spiral	8.11.5
Fastening material	
Rubber lined pipe clips	8.11.6
Pipe clips duplex-fastening	8.11.7
Pipe clips one-side-fastening	8.11.8
Hose tie	8.11.8
Nipple connections	
Nipple reconstruction kit	8.11.9
Nipple block one-outlet	8.11.9
Nipple block two-outlets	8.11.10
Nipple block three up to eight-outlets	8.11.10
Nipple block one up to eight-outlets	8.11.11
Straight-way nipple block one-outlet	8.11.12
Straight-way nipple block three-outlet	8.11.12
Straight-way nipple block acc to AZ-1760-04	8.11.13
Straight-way nipple block acc to FAZ02225-00	8.11.13
Straight Bulkhead coupling with Hydraulic Grease Nipple	8.11.14
Angular Bulkhead coupling with Hydraulic Grease Nipple	8.11.14
Elbow fitting with lubrication nipple behind	8.11.15
Elbow fitting with lubrication nipple and dust cap	8.11.15
Elbow fitting with lubrication nipple top	8.11.16

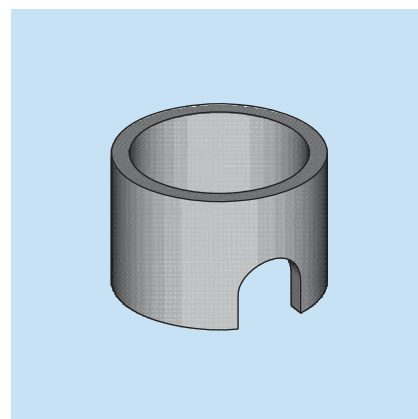
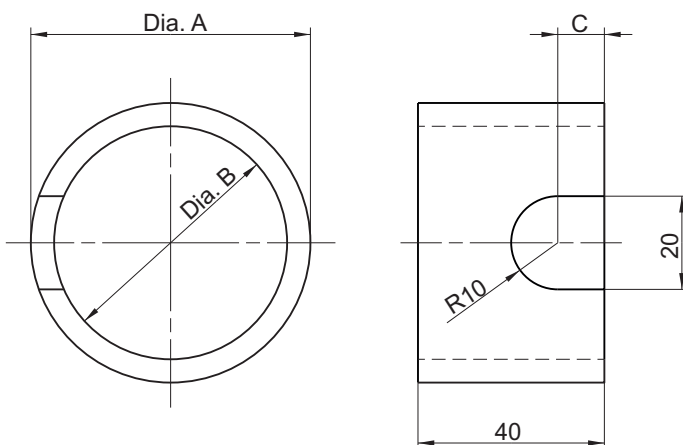


Weld-on Nut



Part-No.	Material
FWZ02617-00	Steel

Protection Ring

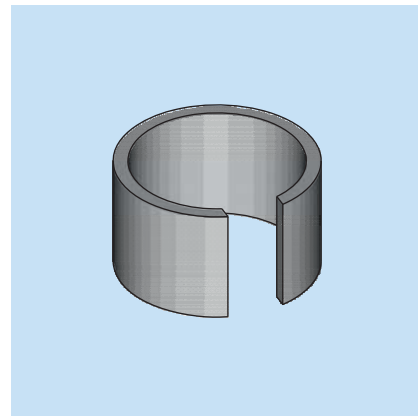
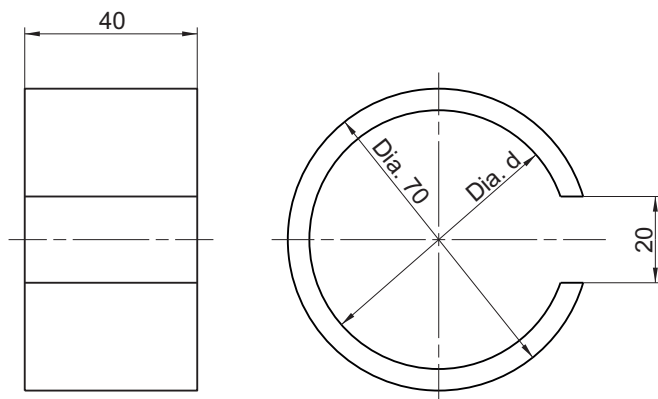


Part-No.	Dia. A	Dia. B	C	Material
FWZ02902-01	60	50	10	Steel
FWZ02902-02	90	78	13	Steel
0802000595	70	60	10	Steel

Subject to alterations! © BEKA 2013 All rights reserved!

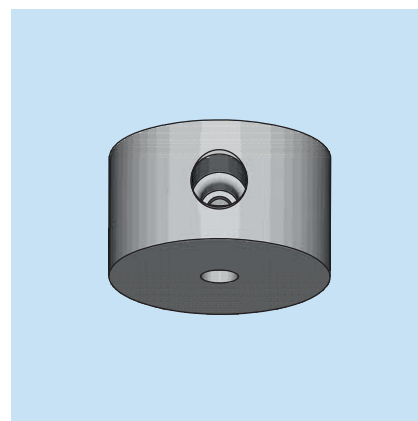
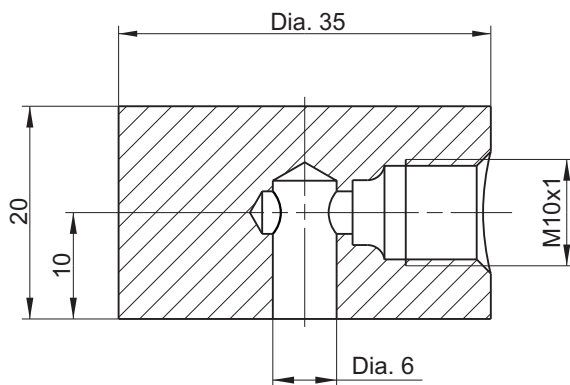


Protector for Lubrication Points



Part-No.	Dia. d	Material
FWZ02902-00	60	Steel undercoated
FWZ02902-06	50	Steel bare

Weld-on Piece for connecting the Lubrication Point

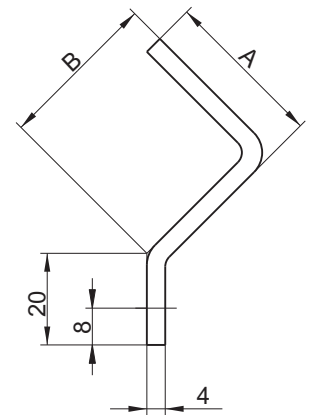
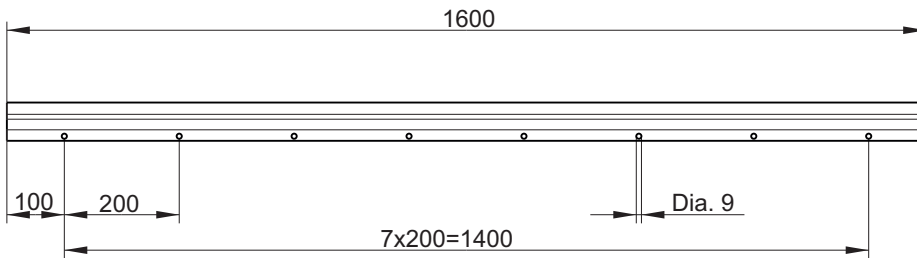
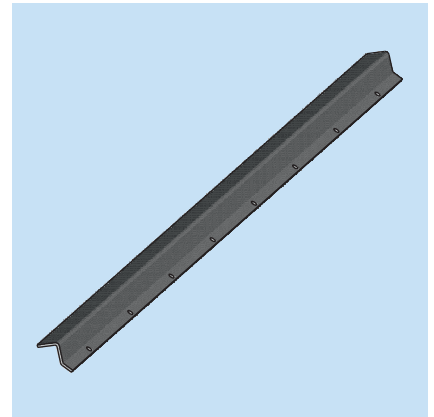


Part-No.	Material
FWZ03326-00	Steel

Subject to alterations! © BEKA 2013 All rights reserved!



Protector for lines

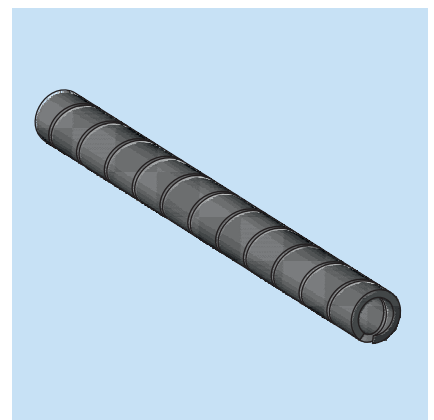
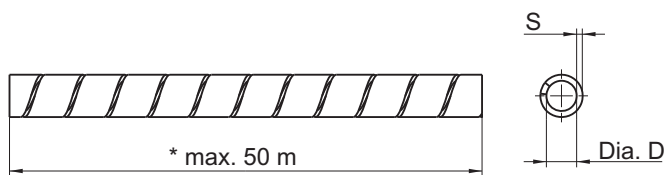


Part-No.	A	B	Material
0800800628	35	35	Steel

All Parts made of Steel are Zinc coated and yellow chromated.

Spiral Protection

* =Indicate Length at order!



Part-No.	ØD	S	Material
100121005	8	1.5	Polyethylene
100120463	4	1	Color black

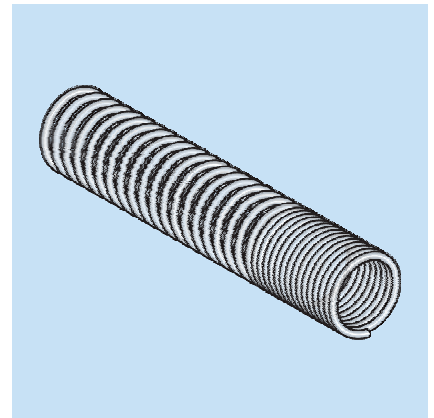
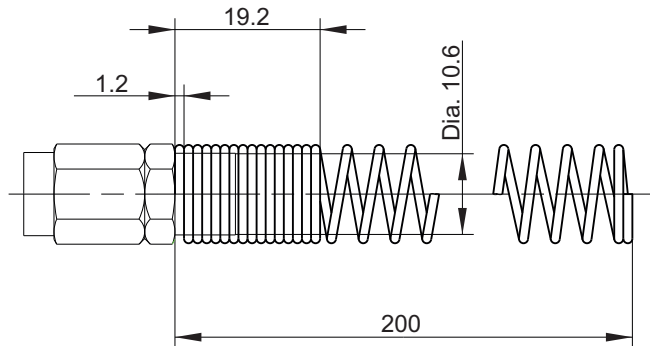
Technical data:

Melting point: -112° C

Temperature range of use: -50° C to +85° C

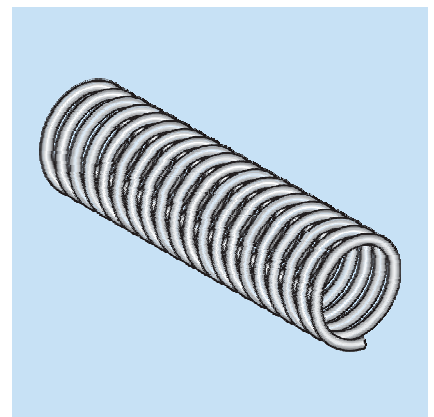
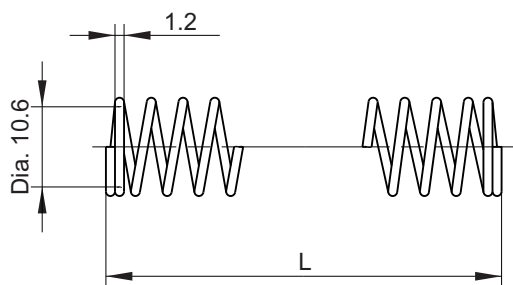


Bent Protection Spiral



Part-No.	Material
100121002	Steel zinc coated yellow chromate

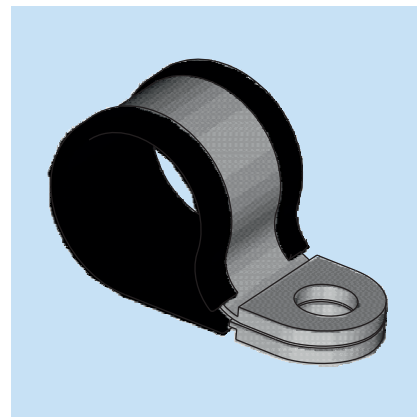
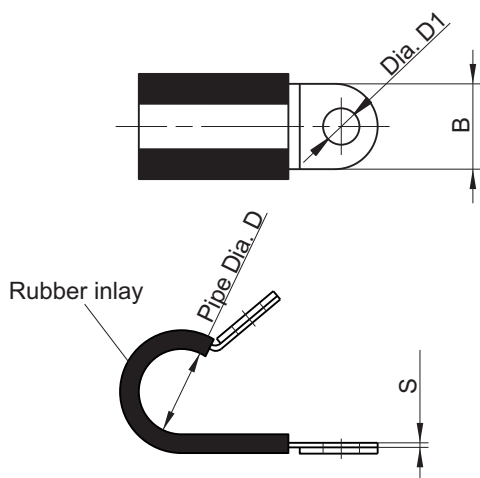
Bent Protection Spiral



Part-No.	L (mm)	Material
1001 21 004	5000	1.4310
1001 21 040	2000	1.4310
1001 21 041	1300	1.4310
1001 21 042	750	1.4310



Rubber lined Pipe Clips



Part-No.	B	Pipe Dia. D	S	Dia. D1	Material
1001 500 10	12	6	0.5	5.3	Steel
1001 500 20	12	9	0.5	5.3	Steel
1001 500 30	12	12	0.5	5.3	Steel
1001 500 40	12	15	0.5	5.3	Steel
1001 500 60	12	17	0.5	5.3	Steel
1001 500 65	12	18	0.5	5.3	Steel
1001 500 50	12	20	0.5	5.3	Steel
1003 050 019	15	6	0.6	6.4	Steel
1003 050 006	15	9	0.6	6.4	Steel
1003 050 022	15	10	0.6	6.4	Steel
1003 050 012	15	12	0.6	6.4	Steel
1003 050 023	15	15	0.8	6.4	Steel
1003 050 003	15	17	0.8	6.4	Steel
1003 050 013	15	18	0.8	6.4	Steel
1003 050 032	15	19	0.8	6.4	Steel
1003 050 004	15	20	0.8	6.4	Steel
1003 050 014	15	22	0.8	6.4	Steel
1003 050 016	15	25	0.8	6.4	Steel

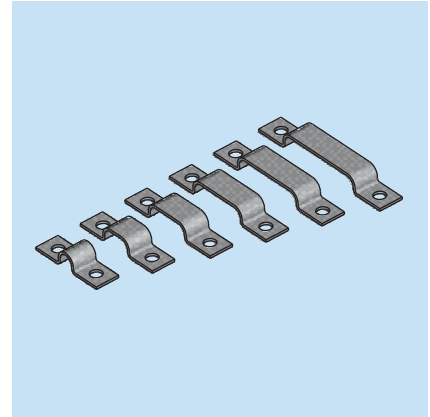
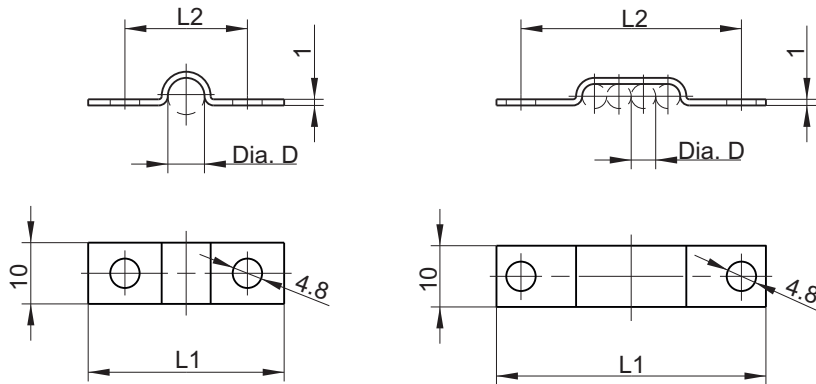
All Parts made of Steel are Zinc coated.





Pipe Clips

Duplex-fastening, at DIN 72573



Part-No.	Dia. D	Number of pipes	L1	L2	Material
097 257 300 411	4	1	29	17	Steel
097 257 300 412	4	2	33	21	Steel
097 257 300 413	4	3	39	27	Steel
097 257 300 414	4	4	44	32	Steel
097 257 300 415	4	5	48	36	Steel
097 257 300 416	4	6	52	40	Steel
097 257 300 111	6	1	32	20	Steel
097 257 300 112	6	2	38	26	Steel
097 257 300 113	6	3	45	33	Steel
097 257 300 114	6	4	51	39	Steel
097 257 300 115	6	5	57	45	Steel
097 257 300 116	6	6	64	52	Steel
097 257 300 211	8	1	34	22	Steel
097 257 300 212	8	2	42	30	Steel
097 257 300 213	8	3	51	39	Steel
097 257 300 214	8	4	59	47	Steel
097 257 300 215	8	5	68	56	Steel
097 257 300 216	8	6	76	64	Steel
097 257 300 511	10	1	34	22	Steel
097 257 300 512	10	2	44	32	Steel
097 257 300 513	10	3	55	43	Steel
097 257 300 514	10	4	67	55	Steel
097 257 300 515	10	5	77	65	Steel
097 257 300 516	10	6	90	78	Steel

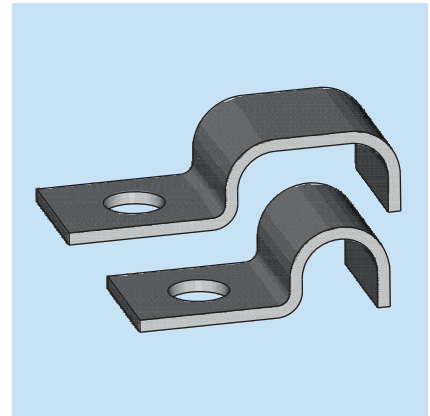
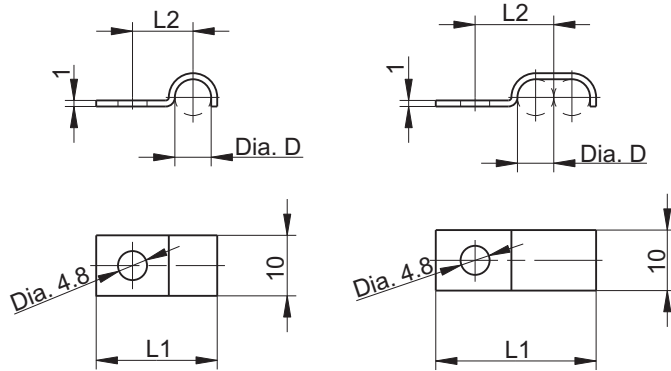
All Parts made of Steel are Zinc coated.

Subject to alterations! © BEKA 2013 All rights reserved!



Pipe Clips

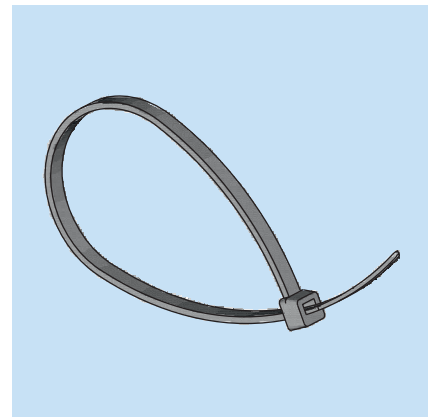
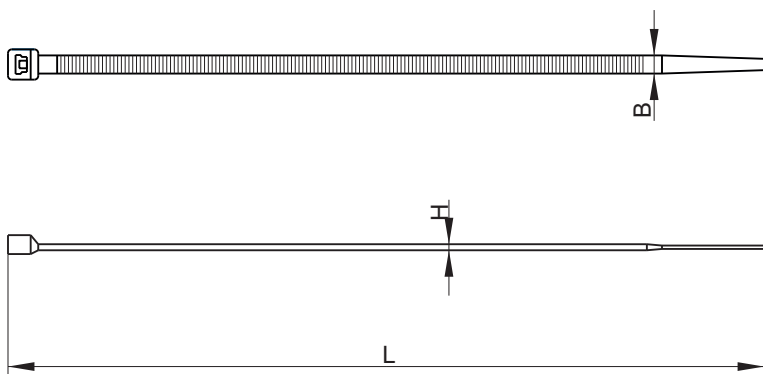
One-side-fastening, at DIN 72571



Part-No.	Dia. D	Number of pipes	L1	L2	Material
097 257 100 111	4	1	18	9	Steel
097 257 100 211	6	1	20	10	Steel
097 257 100 311	8	1	22	11	Steel
097 257 100 411	10	1	23	11	Steel
097 257 100 112	4	2	22.5	11	Steel
097 257 100 212	6	2	26.5	13	Steel
097 257 100 312	8	2	30.5	15	Steel
097 257 100 412	10	2	33.5	16	Steel

All Parts of steel are Zinc coated.

Hose Tie

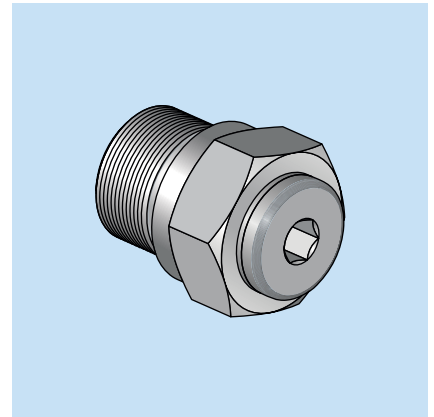
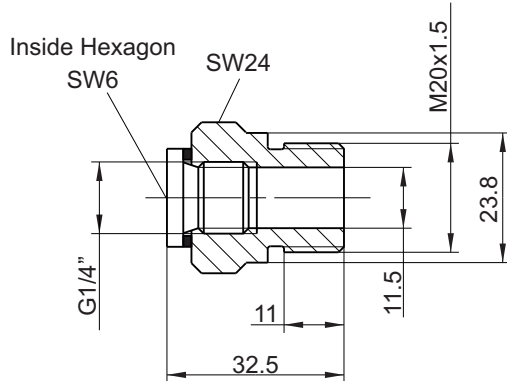


Part-No.	L	B	H	Material
100 121 517	200	4.8	1.6	Plastic
100 121 012	200	3.6	1	Plastic
100 121 520	360	4.8	1.6	Plastic
100 121 518	365	7.8	1.8	Plastic
100 121 016	450	7.8	1.8	Plastic

Subject to alterations! © BEKA 2013 All rights reserved!



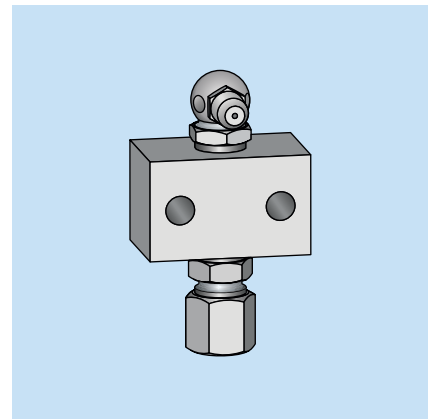
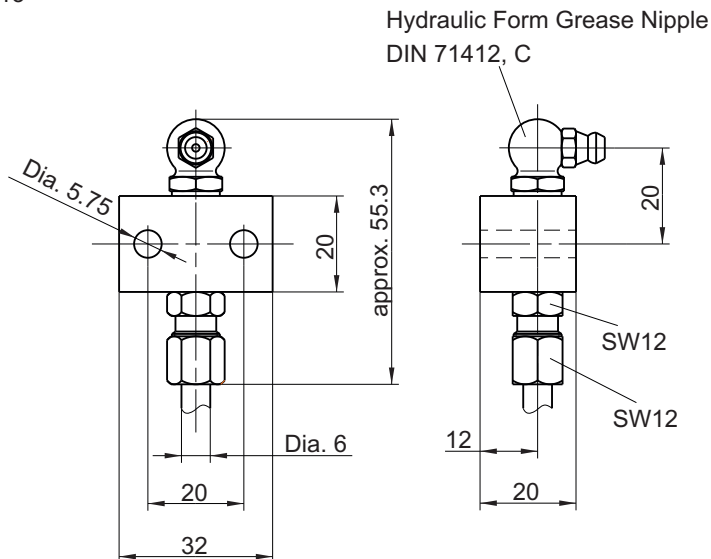
Nipple reconstruction kit



Part-No.	Material
21590010020	Steel zinc coated yellow chromate

Nipple Block One-Outlet

at AZ-1713



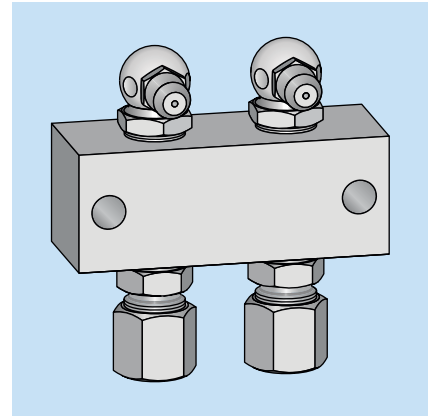
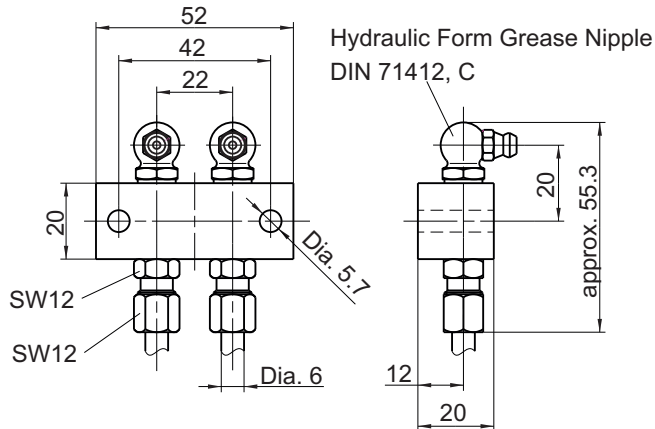
Part-No.	Material
21590020014	Steel zinc coated yellow chromate

© BEKA 2013 All rights reserved!
Subject to alterations!



Nipple Block Two-Outlets

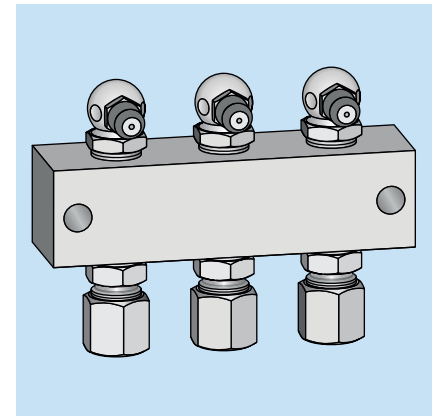
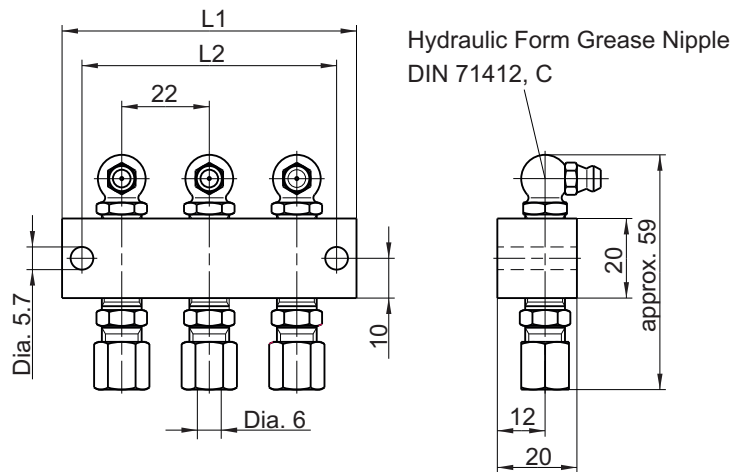
at AZ-1714



Part-No	Material
21590020024	Steel zinc coated yellow chromate

Nipple Block Three up to Eight-Outlets

Pic.: Nipple Block Three-Outlets

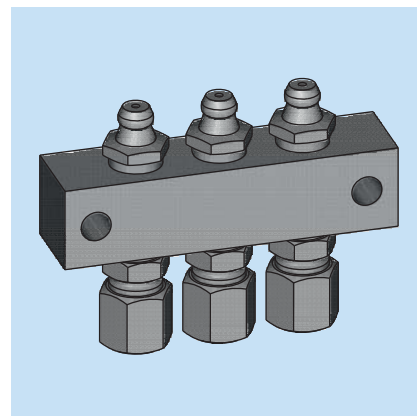
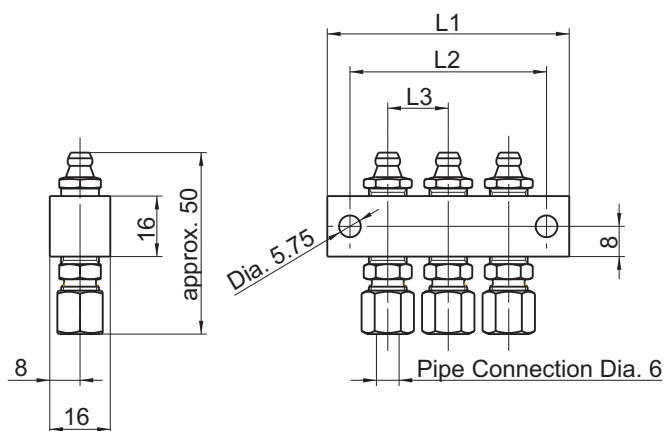


Part-No.	Number of connections	L1	L2	Material
2159 0020 025	3	74	64	Steel
2159 0020 026	4	96	86	Steel
2159 0020 027	5	118	108	Steel
2159 0020 028	6	140	130	Steel
2159 0020 029	8	184	174	Steel

All Parts made of steel are zinc coated and yellow chromated.

Nipple Block One up to eight-outlets

at FAZ1714-05



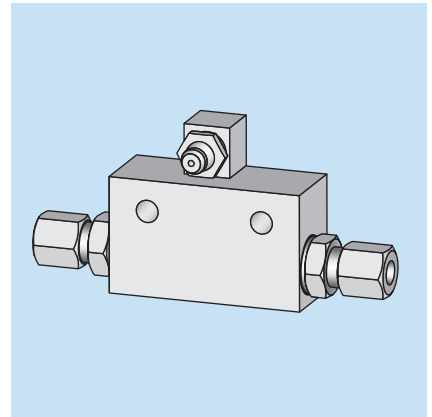
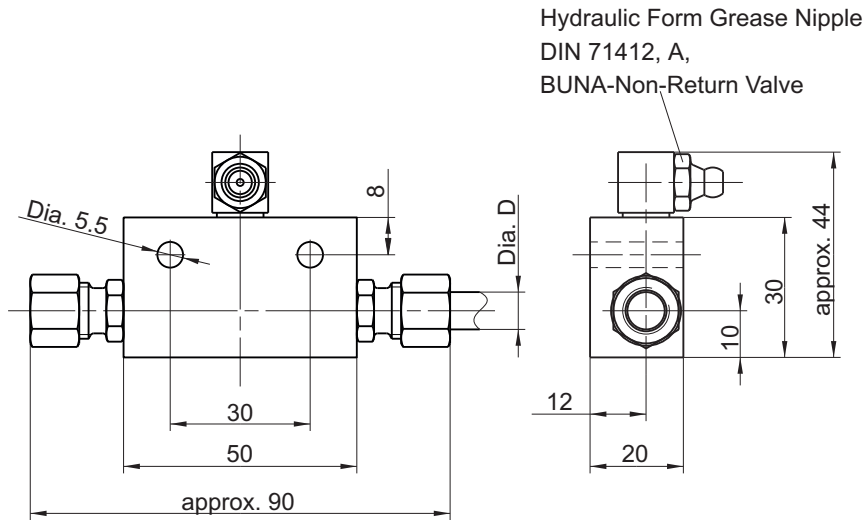
Part-No.	Number of connections	L1	L2	L3	Material
2159 0020 065	1	32	20	20	Steel
2159 0020 066	2	52	40	16	Steel
2159 0020 067	3	64	52	16	Steel
2159 0020 068	4	80	68	16	Steel
2159 0020 069	5	96	84	16	Steel
2159 0020 070	6	112	100	16	Steel
2159 0020 071	7	128	116	16	Steel
2159 0020 072	8	144	132	16	Steel

All Parts made of steel are zinc coated and yellow chromated.



Straight-Way Nipple Block One-Outlet

Connection Dia. 6 and Dia. 8

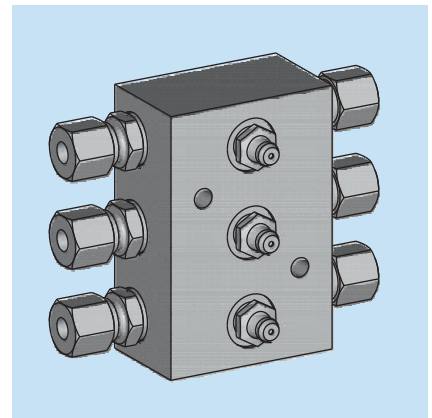
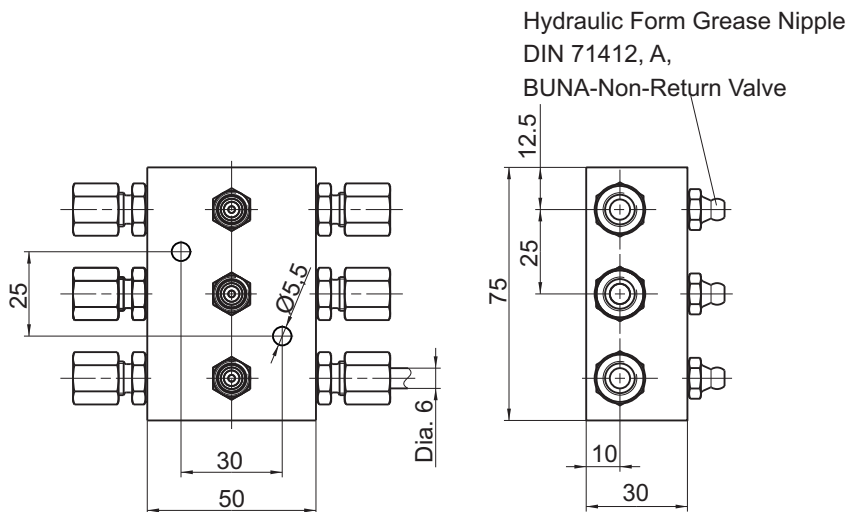


Part-No.	Dia. D	Material
2159 0030 014	6	Steel
2159 0030 017	8	Steel

All Parts made of steel are zinc coated and yellow chromated.

Straight-Way Nipple Block 3 Outlets

at AZ-1760-02



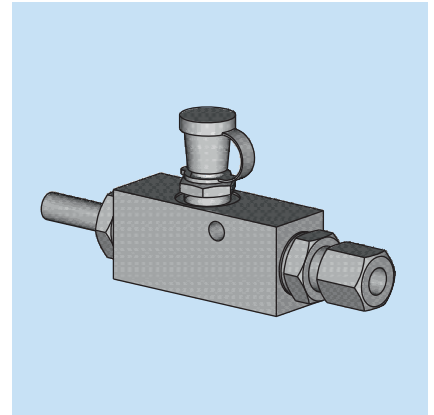
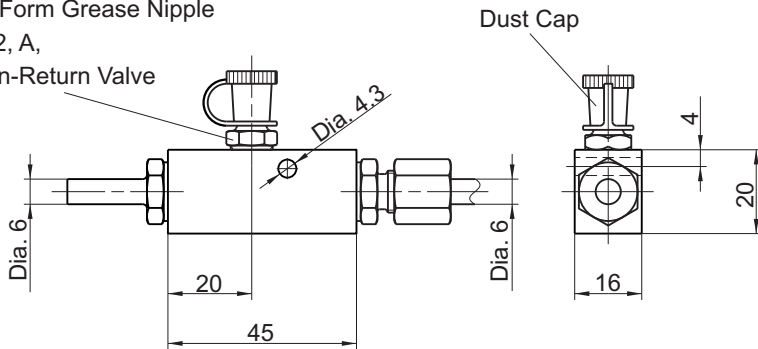
Part-No.	Material
21590030016	Steel zinc coated yellow chromate



Straight-Way Nipple Block

at AZ-1760-04

Hydraulic Form Grease Nipple
 DIN 71412, A,
 BUNA-Non-Return Valve

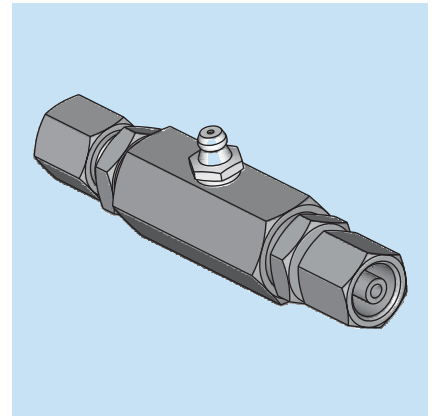
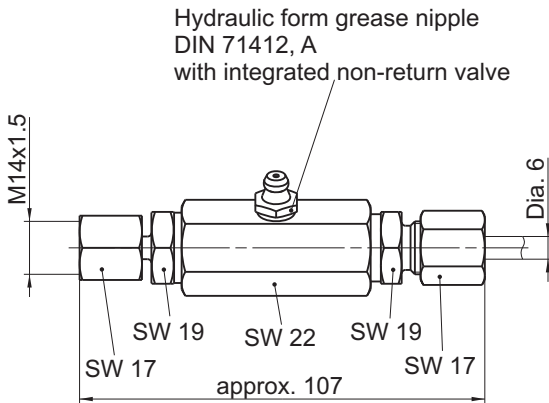


Part-No.	Material
21590030020	Steel zinc coated yellow chromate

Straight-Way Nipple Block

acc to FAZ02225-00

Hydraulic form grease nipple
 DIN 71412, A
 with integrated non-return valve

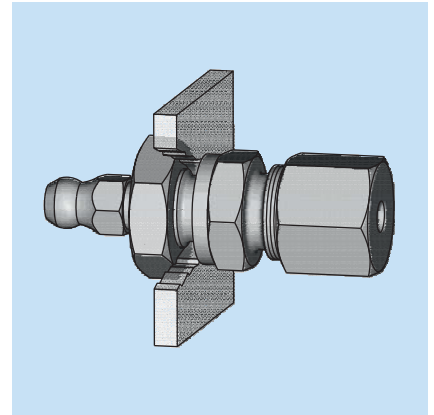
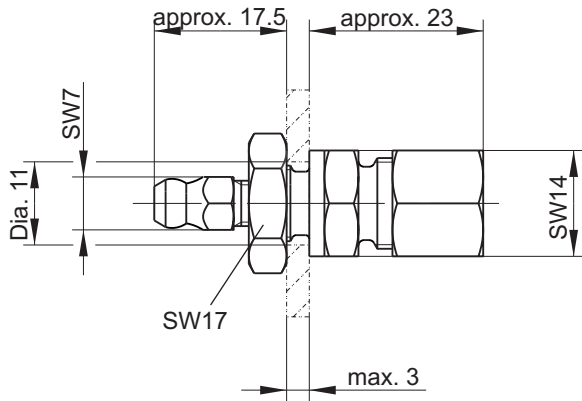


Part-no.	Material
21590030015	Steel zinc coated yellow chromate
21590030040	stainless

Subject to alterations! © BEKA 2013 All rights reserved!

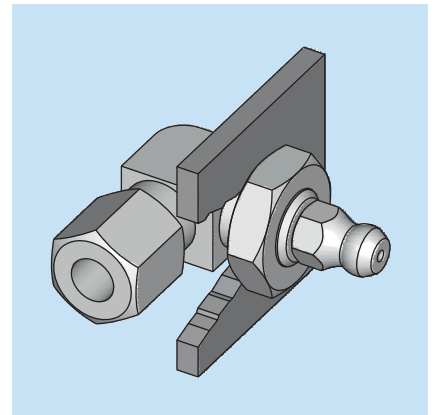
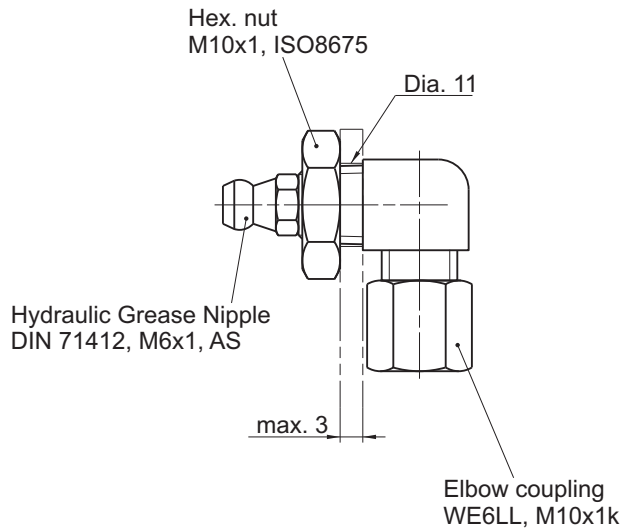


Straight Bulkhead coupling with Hydraulic Grease Nipple



Part-No.	Material
FAZ03552-00	Steel zinc coated yellow chromate

Angular Bulkhead coupling with Hydraulic Grease Nipple



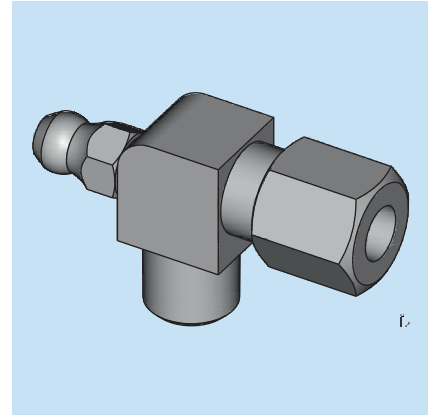
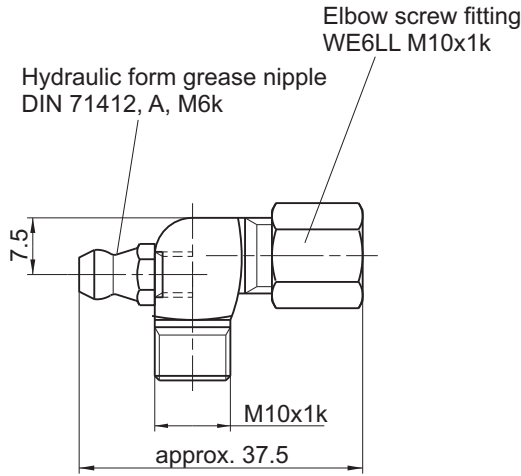
Part-No.	Material
FAZ03552-02	Steel zinc coated yellow chromate

© BEKA 2013 All rights reserved!
Subject to alterations!



Elbow fitting with lubricating nipple

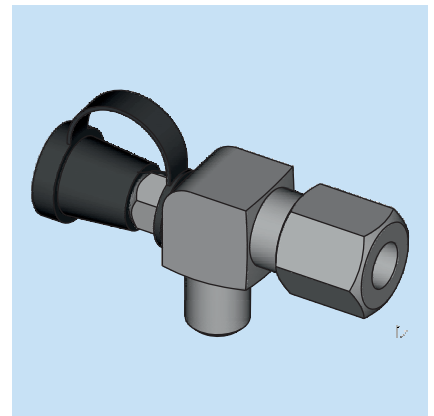
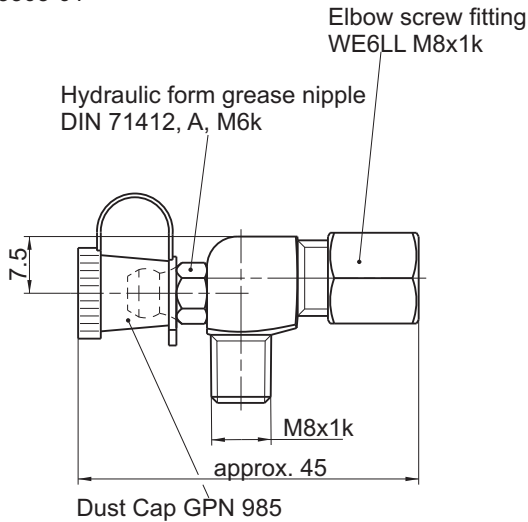
acc to FAZ03303-00



Part-no.	Material
FAZ03303-00	Steel zinc coated yellow chromate

Elbow fitting with lubricating nipple and dust cap

acc to FAZ03303-01

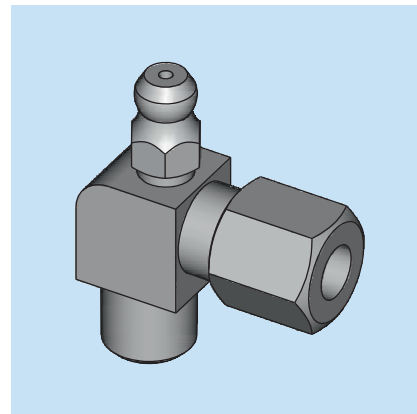
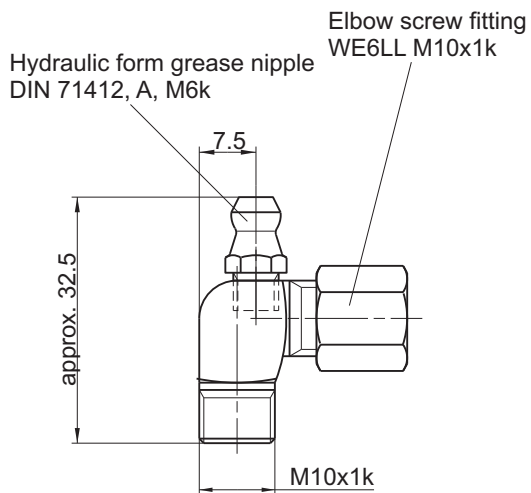


Part-no.	Material
FAZ03303-01	Steel zinc coated yellow chromate



Elbow fitting with lubricating nipple

acc to FAZ03303-02



Part-no.	Material
FAZ03303-02	Steel zinc coated yellow chromate

